

# FlashShip

Product Catalog <sup>TM</sup>



ARCHITECTURAL DOOR ACCESSORIES™

Markar | McKinney | Pemko | Rockwood

NORTON | RIXSON | YALE

**ASSA ABLOY**

Experience a safer  
and more open world

# FlashShip™ Program Information

The ASSA ABLOY FlashShip program allows the convenience of placing a single order for hundreds of different products from ASSA ABLOY, shipping from one of our six FlashShip locations within 24 hours!

The FlashShip program currently offers hardware providers the most comprehensive one-stop selection available, with > 1,200 high-demand products that are delivered via 24 hour shipping from one of six warehouses in the U.S. Customers in all 50 states are able to take advantage of the program.

FlashShip provides a 99 percent on-time fill rate, meaning products are shipped within 24 hours 99 percent of the time. The program also allows for a 30-day grace period on all orders. If a customer orders something in error, they can return it within 30 days with no restocking fee.

In addition to supporting quick shipping, the FlashShip program drastically reduces inventory pressure experienced by many hardware vendors, and shipping is free on orders of \$1,500 or more.



## HOW TO PLACE AN ORDER

To place a qualifying order for the FlashShip program:

- A. Enter FlashShip order via [FlashShip WebShop](#).
- B. Use the “FlashShip Order Form” on pages 63-64 and indicate product by FlashShip part number as stated in the FlashShip catalog, or
  - E-mail your purchase order to [flashship@assaabloy.com](mailto:flashship@assaabloy.com)
  - Also, products must be indicated by their FlashShip part number or by exact model number for available product configurations in the current FlashShip program book.

## Lead Time

Lead time is 24 hours from receipt of order. We reserve the right to limit quantities. Only items printed in this current publication will be given 24 hour lead times for shipping.

## Part Numbers

Specific part numbers are assigned to each unique configuration. These FlashShip part numbers should be included on the purchase order to ensure ease of processing.

## Mixed Orders

To ensure expedited processing, FlashShip products must be submitted on a separate purchase order from non-FlashShip products. Any orders received including items that are not currently published in the FlashShip offering will be returned to the customer for re-submittal.

04

**FlashShip™**

Contact Information

Digital Tools

Terms & Conditions

---

07

**Yale®**

Product Comparison Charts

Mortise Locks & Cylinders

Cylindrical Locks

Cylindrical Deadbolts

Exit Devices

Exit Device Trim, Mullions & Cylinders

Door Closers

nexTouch™ Keypad Locks

Residential Products

36

**ASSA ABLOY Architectural Door Accessories**

**McKinney**

Spring Hinges

3 & 5 Knuckle Hinges

MacPro® and ElectroLynx® Hinges

**Markar/Pemko**

Markar Stainless Steel Pin & Barrel Continuous Hinges

Thresholds

Door Shoes, Jamb Sets, Sweeps & Astragals

Rain Drips, Automatic Door Bottoms, & Aluminum Geared Continuous Hinges

Adhesive Gaskets

**Rockwood**

Push & Pull Plates

Door Pulls, Lock Protectors & Door Stops

Flush Bolts, Dust Proof Strikes, Surface Bolts, Roller Latches, Door Guards

**Rockwood (cont).**

Silencers, Knockers, Coat Hooks, Misc. Pulls, Coordinators & Flush Bolts

Lite Kits

58

**Norton**

Door Closers

Low Energy Door Operators

60

**Rixson®**

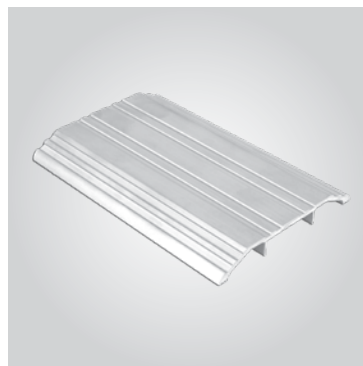
Pivot Sets & Intermediate Pivots

Checkmate® Stops & Holders

Electromagnetic Door Holder/Releases

63

**Order Forms**





# Contacts

## Customer Service

For FlashShip customer service questions and/or issues, call: 800-438-1951

## Hours of Operation

Customer Service: 8:00 am – 4:30 pm EST

## ASSA ABLOY Service Centers

FlashShip products are fully stocked at your local service center, which brings doors, frames and hardware closer to you and your job sites.

### FlashShip WebShop Training

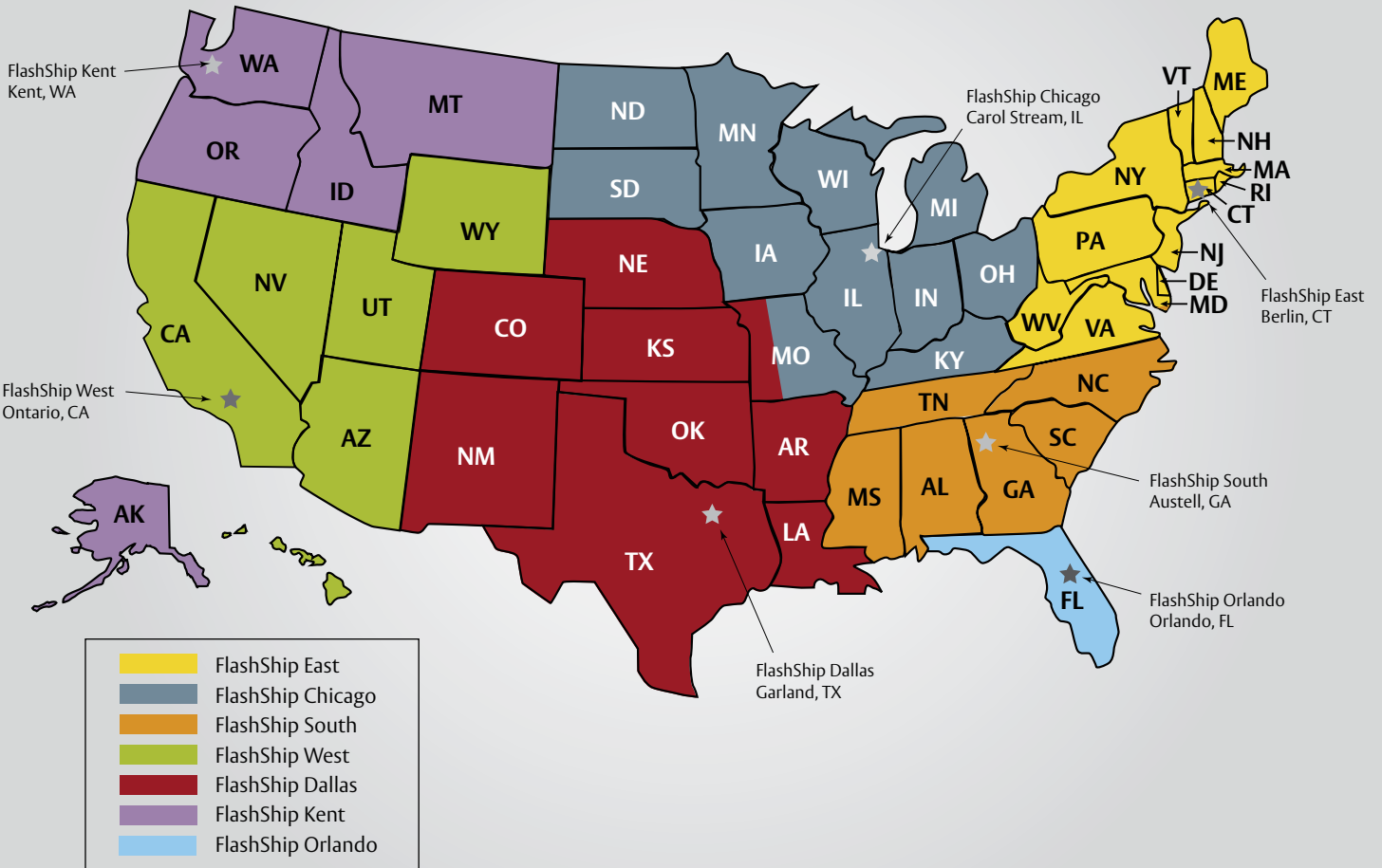
Would you like to request a more in-depth training on FlashShip WebShop for you or your team? We are happy to provide one-on-one training! For more information or to schedule your training, please contact Ujjwal Bhattarai at [ujjwal.bhattarai@assaabloy.com](mailto:ujjwal.bhattarai@assaabloy.com).

## Technical Product Support

For technical questions and/or issues with products, please contact the brands' technical support:

Brand	Hours of Operation	Toll-Free
McKinney	8:00am - 7:30pm EST Mon. - Thurs. 8:00am - 5:00pm EST Fri.	877-747-6845
Markar/Pemko	7:00am - 7:00pm CST Mon. - Thurs. 8:00am - 5:00pm CST Fri.	877-747-6845
Norton	8:00am - 7:30pm EST Mon. - Thurs. 8:00am - 5:00pm EST Fri.	877-974-2255
Rixson	8:00am - 7:30pm EST Mon. - Thurs. 8:00am - 5:00pm EST Fri.	800-457-5670
Rockwood	8:00 am - 7:00 pm EST Mon.-Thurs. 8:00 am - 5:00 pm EST Fri.	877-747-6845
Yale	8:00am - 7:30pm EST Mon. - Thurs. 8:00am - 5:00pm EST Fri.	855-557-5078

# FlashShip Territories



\*All territories should order from FlashShip East for FlashShip Masterkeying

# FlashShip™ WebShop

Place your order on our convenient, easy to use FlashShip WebShop! Styled after the eCommerce sites you're already familiar with, FlashShip WebShop makes ordering your favorite door hardware products easier than ever before.

## Features

- FlashShip WebShop saves you time and simplifies ordering. Select your product, view your price, click purchase and your order is processed!
- Each product listing on WebShop is accompanied by a high resolution image to ensure you're ordering exactly the right product you need.
- FlashShip WebShop features the ability to search for exact keywords, or filter down by brand and product type to browse through hundreds of items
- Quick and efficient checkout makes placing orders through the FlashShip WebShop easy. Save your payment information for future purchases!
- FlashShip Webshop remembers your common orders, making it easy to order the same products you need with a few clicks!

Would you like more in-depth training on FlashShip WebShop? Please contact Ujjwal Bhattarai at [ujjwal.bhattarai@assaabloy.com](mailto:ujjwal.bhattarai@assaabloy.com) to schedule one-on-one training for you or your team!



Visit  
[flashship.assaabloy.com](http://flashship.assaabloy.com)  
to start ordering today!

## Digital Tools

### Customer Support App

Connect with an ASSA ABLOY Customer Service or Technical Product Support representative right from your mobile device! The ASSA ABLOY Customer Support App can be downloaded on your mobile device from the App Store or Google Play and provide you access to:

- Live Chat with a Customer Service or Technical Product Support representative
- Live interactive video for technical troubleshooting
- Access ASSA ABLOY Connect system for order history or order status updates

Download the app today!



### ASSA ABLOY Conversion Tool

Quickly convert competitor part numbers to products offered by ASSA ABLOY Architectural Door Accessories and Yale Commercial products with the ASSA ABLOY Conversion Tool!

Visit today at [www.convert2accessories.com](http://www.convert2accessories.com)  
[www.convert2yale.com](http://www.convert2yale.com)



# FlashShip™ Terms and Conditions

## Quotes

Quoted projects do not qualify for the FlashShip™ program. Standard buying program discounts only.

## Freight

All orders are shipped FOB factory/warehouse, except as expressly provided below. When delivered to the Transportation Company, the Purchaser assumes the risk of loss or damage in transit.

Customer orders with net product value in excess of \$1,500.00 for the continental United States and \$2,000.00 for Alaska and Hawaii will be shipped prepaid by the ASSA ABLOY carrier of choice to a single destination point in the United States.

A minimum freight and handling charge of \$10.00 will be charged on orders with net product value of \$100.00 or less.

For orders with net product value greater than \$100.00 and less than \$1,500.00, freight charges will be calculated as a percentage of the net invoice value and will be added to Customer's invoice. The percentage is based on the National U.S. Average On Highway Diesel Fuel Prices as reported by the US Department of Energy in effect at the beginning of each quarter. On the first Monday of each quarter, the new rate will be published on the ASSA ABLOY Door Security Solutions extranet and will go into effect on the 2nd Monday of the quarter. Please refer to the ASSA ABLOY distributor extranet for the rate chart and information on the current freight charge percentage. The percentage in effect at the time of shipment of the order will be charged.

Expedited shipping options – If the customer requests an expedited method of shipment such as "Next Day Air" the charges will be prepaid by ASSA ABLOY and the full rate for the service, as published by the carrier, will be added to the customer's invoice.

Packing – ASSA ABLOY will pack, mark and ship the products according to its standard procedures for shipment.

## Delivery

Orders will be acknowledged and given a scheduled delivery date. Complete information is required to process all orders. Orders with insufficient information for processing (i.e. part numbers) may be subject to extended lead times which are relative to the time required in obtaining the necessary information for order processing.

Yale will not be liable for back charges incurred based on availability of product or as a result of delays in delivery caused by insufficient information required to process an order. Yale will not be held responsible for delays in delivery caused by strikes, fires, floods or any other causes beyond our control, including the delivery of material to us. Under no circumstances shall Yale be liable or accountable for consequential damages due to failure of delivery.

## Changes/Cancellations

Due to the promptness of delivery, no changes or cancellations can be accepted.

## Prices

All shipments will be made at prices prevailing at time of shipment.

## Terms

Invoices dated the 1st through the 15th will be due for 2% discount on the 10th of the following month. Invoices dated the 16th through the 31st will be due for 2% discount on the 25th of the following month. Net immediately thereafter.

## Returned Goods

All FlashShip products returned as "Goodwill" must meet the following criteria to be considered a return:

- Be in original, unmarked and undamaged cartons.
- Shipped and invoiced within the previous 30 days.

No restocking fee will apply. Upon receipt and verification that the returned merchandise meets the foregoing conditions, a credit will be issued for the original invoice amount.

Customer is responsible for freight on all "Goodwill" returned product.

*Consult the current Price Books for pricing information and a complete list of Terms & Conditions.*

## Warranties

All standard limited warranties apply. Consult current Price Books for a complete list of warranty information.

## ASSA ABLOY

Experience a safer  
and more open world



### Exit Trim

Easily retrofits onto existing exit devices, including competitor models

### Cylindrical

Great for restrooms, storage closets, and offices

### Sectional Mortise

Offered in a variety of decorative levers for multi-family applications and more

## One Lock Platform | Any Opening

Yale nexTouch Keypad Locks are your go-to lock for an easy upgrade from mechanical hardware to basic electronic access control. With its reliable cylindrical, sectional mortise, and exit trim platforms, nexTouch can increase security and add convenient traffic control to any commercial or multi-family building.

For retrofit projects, new construction, and anything in between, between, Yale Works for You<sup>SM</sup>.



Visit the ASSA ABLOY Conversion Tool at [www.convert2yale.com!](http://www.convert2yale.com!)

**Competitive Comparison Charts**

Mortise Lock Comparison						
Yale	Cal-Royal	Dorma	Falcon	Hager	PDQ	Stanley Commercial
8800FL	M8000	ML9000	M	3800	MR	QMS100

Grade 1 Cylindrical Lock Comparison						
Yale	Cal-Royal	Dorma	Falcon	Hager	PDQ	Stanley Commercial
4700LN	CGN	CL800	K/T	3400	GT	QCL100

Grade 2 Cylindrical Lock Comparison						
Yale	Cal-Royal	Dorma	Falcon	Hager	PDQ	Stanley Commercial
4600LN	SL	C500	B/W	3500	GP/SA	QCL200

Deadbolt Comparison							
	Yale	Cal-Royal	Dorma	Falcon	Hager	PDQ	Stanley Commercial
Grade 1	D100	CRB	D800	D100	3100	KT100	QDB100
Grade 2	D200	T	DB600	D200	3200	KV100	QDB200

Grade 1 Industrial Closer Comparison						
Yale	Cal-Royal	Dorma	Falcon	Hager	PDQ	Stanley Commercial
1100BF	300	7400	SC61	5300	3100	QDC100

Grade 1 Architectural Closer Comparison						
Yale	Cal-Royal	Dorma	Falcon	Hager	PDQ	Stanley Commercial
2700	N900	8600	SC81	5200	5300	QDC200

Grade 1 Cast Iron Door Closer Comparison						
Yale	Cal-Royal	Dorma	Falcon	Hager	PDQ	Stanley Commercial
5800	CR441	8900	SC71	5100	7400	QED100

Grade 1 Commercial Exit Device Comparison						
Yale	Cal-Royal	Dorma	Falcon	Hager	PDQ	Stanley Commercial
1800	2200	8300	19	4700	4200	QED300

Grade 1 Commercial Exit Device Comparison - Stainless Steel						
Yale	Cal-Royal	Dorma	Falcon	Hager	PDQ	Stanley Commercial
2100	9800	NA	4700	4200	GP/SA	QED100

Fax 877-888-2772, email [flashship@assaabloy.com](mailto:flashship@assaabloy.com) or use Online Order Entry at [www.assaabloydss.com/extranet](http://www.assaabloydss.com/extranet) by clicking the FlashShip™ icon  
*Note: FlashShip™ reserves the right to limit quantities.*





For small masterkeyed systems of 50 changes or less, the FlashShip™ Masterkeying program offers a way to get Yale masterkeyed products in a flash!

- Only orders for new Masterkey systems in PARA keyway will be accepted
- Offered for product in 626, 630 or 689 finishes; all cylinders provided in 626
- Products must be ordered online through FlashShip in Berlin, CT

The factory will maintain detailed project and distributor information in the Key Records department based on the Masterkey Registry number.

Please note masterkeyed cylinders are not installed in locksets prior to shipping.

### 8800FL Series Mortise Locks - Masterkeyed

#### Sectional Trim - Single Cylinder Functions

Function	Finish	Trim	Cylinder	Keyway	Keying	Strike	Collar	FlashShip™ #
<b>8805FL Storeroom</b>								
8805FL	626	AUR	2153	PARA	MK	2815	1765.250	085992
8805FL	626	PBR	2153	PARA	MK	2815	1765.250	085993
<b>8807FL Entry</b>								
8807FL	626	AUR	2153	PARA	MK	2815	1765.250	085994
8807FL	626	PBR	2153	PARA	MK	2815	1765.250	085995
<b>8808FL Classroom</b>								
8808FL	626	AUR	2153	PARA	MK	2815	1765.250	085996
8808FL	626	PBR	2153	PARA	MK	2815	1765.250	085997
<b>8822FL Dormitory</b>								
8822FL	626	AUR	2153	PARA	MK	2815	1765.250	085998
8822FL	626	PBR	2153	PARA	MK	2815	1765.250	085999
<b>8847FL Apartment</b>								
8847FL	626	AUR	2153	PARA	MK	2815	1765.250	086000
8847FL	626	PBR	2153	PARA	MK	2815	1765.250	086001

#### Escutcheon Trim - Single Cylinder Functions

Function	Finish	Trim	Cylinder	Keyway	Keying	Strike	FlashShip™ #
<b>8805FL Storeroom</b>							
8805FL	626	AUCN	2153	PARA	MK	2815	086002
<b>8807FL Entry</b>							
8807FL	626	AUCN	2153	PARA	MK	2815	086003
<b>8808FL Classroom</b>							
8808FL	626	AUCN	2153	PARA	MK	2815	086004
<b>8822FL Dormitory</b>							
8822FL	626	AUCN	2153	PARA	MK	2815	086005
<b>8847FL Apartment</b>							
8847FL	626	AUCN	2153	PARA	MK	2815	086006

### Key-in-Lever Cylindrical Masterkeyed Locks

#### 4700LN Series Grade 1 Locks

Function	Finish	Lever	Cylinder	Keyway	Keying	Strike	Latch	Adapter Sleeves	FlashShip™ #
<b>4705LN Storeroom</b>									
4705LN	626	AU	1803	PARA	MK	497	694	14-5305-9078-999	085967
4705LN	626	PB	1803	PARA	MK	497	694	14-5305-9078-999	085968
4705LN	626	MO	1803	PARA	MK	497	694	14-5305-9078-999	085969
<b>4707LN Entry</b>									
4707LN	626	AU	1803	PARA	MK	497	694	14-5305-9078-999	085970
4707LN	626	PB	1803	PARA	MK	497	694	14-5305-9078-999	085971
4707LN	626	MO	1803	PARA	MK	497	694	14-5305-9078-999	085972
<b>4708LN Classroom</b>									
4708LN	626	AU	1803	PARA	MK	497	694	14-5305-9078-999	085973
4708LN	626	PB	1803	PARA	MK	497	694	14-5305-9078-999	085974
4708LN	626	MO	1803	PARA	MK	497	694	14-5305-9078-999	085975

Fax 877-888-2772, email [flashship@assaabloy.com](mailto:flashship@assaabloy.com) or use

Online Order Entry at [www.assaabloydss.com/extranet](http://www.assaabloydss.com/extranet) by clicking the FlashShip™ icon

Note: FlashShip™ reserves the right to limit quantities.

Copyright © 2017-2020, ASSA ABLOY Door Security Solutions, an ASSA ABLOY Group company. All rights reserved.  
Reproduction in whole or in part without the express written permission of ASSA ABLOY Door Security Solutions is prohibited.

Part of ASSA ABLOY



## 4600LN Series Grade 2 Locks

Function	Finish	Lever	Cylinder	Keyway	Keying	Strike	Latch	Adapter Sleeves	FlashShip™ #
<b>4605LN Storeroom</b>									
4605LN	626	AU	1806	PARA	MK	497	MCD234	NA	085976
4605LN	626	PB	1806	PARA	MK	497	MCD234	NA	085977
4605LN	626	MO	1806	PARA	MK	497	MCD234	NA	085978
<b>4607LN Entry</b>									
4607LN	626	AU	1806	PARA	MK	497	MCD234	NA	085979
4607LN	626	PB	1806	PARA	MK	497	MCD234	NA	085980
4607LN	626	MO	1806	PARA	MK	497	MCD234	NA	085981
<b>4608LN Classroom</b>									
4608LN	626	AU	1806	PARA	MK	497	MCD234	NA	085982
4608LN	626	PB	1806	PARA	MK	497	MCD234	NA	085983
4608LN	626	MO	1806	PARA	MK	497	MCD234	NA	085984

## D Series Cylindrical Deadbolts - Masterkeyed

## D100 Grade 1

Function	Finish	Cylinder	Keyway	Keying	Strike	Latch	FlashShip™ #
<b>Cylinder x Thumbturn</b>							
D112	626	1807	PARA	MK	D243	D34	085985
<b>Double Cylinder</b>							
D122	626	1807	PARA	MK	D243	D34	085986
<b>D200 Grade 2</b>							
<b>Cylinder x Thumbturn</b>							
D212	626	1808	PARA	MK	D243	D34	085987
<b>Double Cylinder</b>							
D222	626	1808	PARA	MK	D243	D34	085988

## Key-in-Lever Exit Device Trim - Masterkeyed

Classroom Function Trim	Finish	Lever	Cylinder	Keyway	Keying	Adapter Sleeves	FlashShip™ #
446F	626	AU	1802	PARA	MK	14-5305-9078-999	085990
446F	626	PB	1802	PARA	MK	14-5305-9078-999	085991

## Escutcheon x Lever Exit Device Trim - Masterkeyed

Classroom Function Trim	Finish	Lever	Cylinder	Keyway	Keying	Collar	FlashShip™ #
426F	630	AU	1109	PARA	MK	1765.250	086007
426F	630	PB	1109	PARA	MK	1765.250	086008

## Cylinders

Cylinder	Finish	Cylinder	Keyway	Keying	Collar	FlashShip™ #
Mortise Cylinder	626	2153	PARA	MK	1765.250	085933
Rim Cylinder	626	1109	PARA	MK	1765.250	085934

Fax 877-888-2772, email [flashship@assaabloy.com](mailto:flashship@assaabloy.com) or use Online Order Entry at [www.assaabloydss.com/extranet](http://www.assaabloydss.com/extranet) by clicking the FlashShip™ icon

Note: FlashShip™ reserves the right to limit quantities.



Augusta - AUR



Pacific Beach - PBR

Design	Model #	Finish	Hand	Strike	Cylinder	FlashShip™ #	Approx. Wt. Each (Lbs)
<b>8801FL - Passage or Closet Latch</b>							
AUR	8801FL	626	RH	2815	—	085015	6
PBR	8801FL	626	RH	2815	—	085016	6
<b>8802FL - Privacy, Bedroom or Bath Lock</b>							
AUR	8802FL	626	RH	2815	—	085017	6
PBR	8802FL	626	RH	2815	—	085018	6
<b>8805FL - Storeroom or Closet Lock</b>							
AUR	8805FL	626	RH	2815	Less Cylinder	085019	6
PBR	8805FL	626	RH	2815	Less Cylinder	085020	6
<b>8807FL - Entry Lock</b>							
AUR	8807FL	626	RH	2815	Less Cylinder	085021	6
PBR	8807FL	626	RH	2815	Less Cylinder	085022	6
<b>8808FL - Classroom Lock</b>							
AUR	8808FL	626	RH	2815	Less Cylinder	085023	6
PBR	8808FL	626	RH	2815	Less Cylinder	085024	6
<b>8822FL - Dormitory or Exit Lock</b>							
AUR	8822FL	626	RH	2815	Less Cylinder	085025	7
PBR	8822FL	626	RH	2815	Less Cylinder	085026	7
<b>8847FL - Apartment Corridor Door Lock</b>							
AUR	8847FL	626	RH	2815	Less Cylinder	085027	7
PBR	8847FL	626	RH	2815	Less Cylinder	085028	7

Fax 877-888-2772, email [flashship@assaabloy.com](mailto:flashship@assaabloy.com) or use  
 Online Order Entry at [www.assaabloydss.com/extranet](http://www.assaabloydss.com/extranet) by clicking the FlashShip™ icon  
 Note: FlashShip™ reserves the right to limit quantities.

Copyright © 2017-2020, ASSA ABLOY Door Security Solutions, an ASSA ABLOY Group company. All rights reserved.  
 Reproduction in whole or in part without the express written permission of ASSA ABLOY Door Security Solutions is prohibited.

Part of ASSA ABLOY



Augusta - AU x CN

Design	Model #	Finish	Hand	Strike	Cylinder	FlashShip™ #	Approx. Wt. Each (Lbs)
<b>8801FL - Passage or Closet Latch</b>							
AUCN	8801FL	626	RH	2815	—	085330	6.5
<b>8802FL - Privacy, Bedroom or Bath Lock</b>							
AUCN	8802FL	626	RH	2815	—	085331	7.5
<b>8805FL - Storeroom or Closet Lock</b>							
AUCN	8805FL	626	RH	2815	Less Cylinder	085332	7.5
<b>8807FL - Entry Lock</b>							
AUCN	8807FL	626	RH	2815	Less Cylinder	085333	7.5
<b>8808FL - Classroom Lock</b>							
AUCN	8808FL	626	RH	2815	Less Cylinder	085334	7.5
<b>8822FL - Dormitory or Exit Lock</b>							
AUCN	8822FL	626	RH	2815	Less Cylinder	085335	7.5
<b>8847FL - Apartment Corridor Door Lock</b>							
AUCN	8847FL	626	RH	2815	Less Cylinder	085336	7.5

Fax 877-888-2772, email [flashship@assaabloy.com](mailto:flashship@assaabloy.com) or use  
Online Order Entry at [www.assaabloydss.com/extranet](http://www.assaabloydss.com/extranet) by clicking the FlashShip™ icon

*Note: FlashShip™ reserves the right to limit quantities.*



## Mortise Cylinders and Keyblanks

Model #	Description	Key Section	Finish	Collar Size Included	FlashShip™ #	Approx. Wt. Each (Lbs)
<b>Mortise Cylinders</b>						
2153 x 1-1/8"	6-Pin, Keyed Random	PARA	613E	1765.250	085396	0.4
2153 x 1-1/8"	6-Pin, Keyed Random	PARA	626	1765.250	085000	0.4
2553 x 1-1/8"	6-Pin, Schlage® Keyed Random	C	613E	1765.250	085420	0.4
2553 x 1-1/8"	6-Pin, Schlage® Keyed Random	C	626	1765.250	085001	0.4
<b>Mortise Cylinders (LFIC)</b>						
2196 x 1-1/2"	LFIC, 6-Pin, 0-Bitted	GA	626	1765.656	086577	1
2196 x 1-1/2"	LFIC, 6-Pin, 0-Bitted	PARA	626	1765.656	086578	1
<b>Mortise Housings</b>						
K660 x 1-3/8"	SFIC Housing Only, Less Core	—	613E	1765.563	085421	0.4
K660 x 1-3/8"	SFIC Housing Only, Less Core	—	626	1765.563	085002	0.4
<b>Interchangeable Cores (Large Format)</b>						
1210	Core Only, 6-Pin, 0-Bitted	GA	626	—	086563	0.3
1210	Core Only, 6-Pin, 0-Bitted	PARA	626	—	086564	0.3
<b>Miscellaneous</b>						
—	Cylinder Ring	—	626	1765.156	086570	0.1
—	Cylinder Ring	—	626	1765.219	086571	0.1
—	Cylinder Ring	—	626	1765.250	086569	0.1
—	Cylinder Ring	—	626	1765.656	086568	0.1
—	Cylinder Ring	—	626	KP4	086599	0.1
<b>Keyblanks</b>						
RN11	6-Pin Blank	PARA		085006		0.1*
RN11	6-Pin Blank	GA		202817		0.1*
RN11 - Masterkeyed	6-pin Cut Key	PARA		085941		.01**

\*Minimum quantity of 50

\*\*Existing systems only, must provide registry number

Fax 877-888-2772, email [flashship@assaabloy.com](mailto:flashship@assaabloy.com) or use  
 Online Order Entry at [www.assaabloydss.com/extranet](http://www.assaabloydss.com/extranet) by clicking the FlashShip™ icon  
 Note: FlashShip™ reserves the right to limit quantities.

Copyright © 2017-2020, ASSA ABLOY Door Security Solutions, an ASSA ABLOY Group company. All rights reserved.  
 Reproduction in whole or in part without the express written permission of ASSA ABLOY Door Security Solutions is prohibited.

Part of ASSA ABLOY



Augusta - AU

Design	Model #	Finish	Strike	Cylinder	FlashShip™ #	Approx. Wt. Each (Lbs)
<b>5401LN - Passage or Closet Latch</b>						
AU	5401LN	626	497 ANSI	—	086536	4
<b>5402LN - Privacy, Bedroom or Bath Lock</b>						
AU	5402LN	626	497 ANSI	—	086537	4
<b>5405LN - Storeroom or Closet Lock</b>						
AU	5405LN	626	497 ANSI	1802, 6-Pin, PARA Keyed Random	086538	5
AU	5405LN	626	497 ANSI	2802, 6-Pin, Schlage® C Keyed Random	086539	5
<b>5405LN - Storeroom or Closet Lock (Small Format Interchangeable Core)</b>						
BAU	5405LN	626	497 ANSI	Less Core	086540	5
<b>5407LN - Entry Lock</b>						
AU	5407LN	626	497 ANSI	1802, 6-Pin, PARA Keyed Random	086541	5
AU	5407LN	626	497 ANSI	2802, 6-Pin, Schlage® C Keyed Random	086542	5
<b>5407LN - Entry Lock (Small Format Interchangeable Core)</b>						
BAU	5407LN	626	497 ANSI	Less Core	086543	5
<b>5408LN - Classroom Lock</b>						
AU	5408LN	626	497 ANSI	1802, 6-Pin, PARA Keyed Random	086544	5
AU	5408LN	626	497 ANSI	2802, 6-Pin, Schlage® C Keyed Random	086545	5
<b>5408LN - Classroom Lock (Small Format Interechangeable Core)</b>						
BAU	5408LN	626	497 ANSI	Less Core	086546	5

Fax 877-888-2772, email [flashship@assaabloy.com](mailto:flashship@assaabloy.com) or use Online Order Entry at [www.assaabloydss.com/extranet](http://www.assaabloydss.com/extranet) by clicking the FlashShip™ icon

Note: FlashShip™ reserves the right to limit quantities.



Augusta - AU



Monroe - MO



Pacific Beach - PB

Design	Model #	Finish	Strike	Cylinder	FlashShip™ #	Approx. Wt. Each (Lbs)
<b>4701LN - Passage or Closet Latch</b>						
AU	4701LN	613E	497 ANSI	—	085370	4
AU	4701LN	626	497 ANSI	—	085045	4
MO	4701LN	613E	497 ANSI	—	085372	4
MO	4701LN	626	497 ANSI	—	085239	4
PB	4701LN	613E	497 ANSI	—	085371	4
PB	4701LN	626	497 ANSI	—	085046	4
<b>4702LN - Privacy, Bedroom or Bath Lock</b>						
AU	4702LN	613E	497 ANSI	—	085373	4
AU	4702LN	626	497 ANSI	—	085047	4
MO	4702LN	613E	497 ANSI	—	085375	4
MO	4702LN	626	497 ANSI	—	085240	4
PB	4702LN	613E	497 ANSI	—	085374	4
PB	4702LN	626	497 ANSI	—	085048	4
<b>4705LN - Storeroom or Closet Lock</b>						
AU	4705LN	613E	497 ANSI	1804, 6-Pin, PARA Keyed Random	085376	5
AU	4705LN	613E	497 ANSI	2804, 6-Pin, Schlage® C Keyed Random	085377	5
AU	4705LN	626	497 ANSI	1804, 6-Pin, PARA Keyed Random	085049	5
AU	4705LN	626	497 ANSI	2804, 6-Pin, Schlage® C Keyed Random	085050	5
MO	4705LN	613E	497 ANSI	1804, 6-Pin, PARA Keyed Random	085380	5
MO	4705LN	613E	497 ANSI	2804, 6-Pin, Schlage® C Keyed Random	085381	5
MO	4705LN	626	497 ANSI	1804, 6-Pin, PARA Keyed Random	085241	5
MO	4705LN	626	497 ANSI	2804, 6-Pin, Schlage® C Keyed Random	085242	5
PB	4705LN	613E	497 ANSI	1804, 6-Pin, PARA Keyed Random	085378	5
PB	4705LN	613E	497 ANSI	2804, 6-Pin, Schlage® C Keyed Random	085379	5
PB	4705LN	626	497 ANSI	1804, 6-Pin, PARA Keyed Random	085051	5
PB	4705LN	626	497 ANSI	2804, 6-Pin, Schlage® C Keyed Random	085052	5
<b>4705LN - Storeroom or Closet Lock (Small Format Interchangeable Core)</b>						
BAU	4705LN	613E	497 ANSI	Less Core	085382	5
BAU	4705LN	626	497 ANSI	Less Core	085053	5
<b>4707LN - Entry Lock</b>						
AU	4707LN	613E	497 ANSI	1804, 6-Pin, PARA Keyed Random	085383	5
AU	4707LN	613E	497 ANSI	2804, 6-Pin, Schlage® C Keyed Random	085384	5
AU	4707LN	626	497 ANSI	1804, 6-Pin, PARA Keyed Random	085054	5
AU	4707LN	626	497 ANSI	2804, 6-Pin, Schlage® C Keyed Random	085055	5

Fax 877-888-2772, email [flashship@assaabloy.com](mailto:flashship@assaabloy.com) or use  
 Online Order Entry at [www.assaabloydss.com/extranet](http://www.assaabloydss.com/extranet) by clicking the FlashShip™ icon  
 Note: FlashShip™ reserves the right to limit quantities.

Copyright © 2017-2020, ASSA ABLOY Door Security Solutions, an ASSA ABLOY Group company. All rights reserved.  
 Reproduction in whole or in part without the express written permission of ASSA ABLOY Door Security Solutions is prohibited.

Part of ASSA ABLOY

# 4700LN Series Grade 1 Cylindrical Locks 2-3/4" Backset



Augusta - AU



Monroe - MO



Pacific Beach - PB

Design	Model #	Finish	Strike	Cylinder	FlashShip™ #	Approx. Wt. Each (Lbs)
<b>4707LN - Entry Lock (Cont)</b>						
MO	4707LN	613E	497 ANSI	1804, 6-Pin, PARA Keyed Random	085387	5
MO	4707LN	613E	497 ANSI	2804, 6-Pin, Schlage® C Keyed Random	085397	5
MO	4707LN	626	497 ANSI	1804, 6-Pin, PARA Keyed Random	085243	5
MO	4707LN	626	497 ANSI	2804, 6-Pin, Schlage® C Keyed Random	085244	5
PB	4707LN	613E	497 ANSI	1804, 6-Pin, PARA Keyed Random	085385	5
PB	4707LN	613E	497 ANSI	2804, 6-Pin, Schlage® C Keyed Random	085386	5
PB	4707LN	626	497 ANSI	1804, 6-Pin, PARA Keyed Random	085056	5
PB	4707LN	626	497 ANSI	2804, 6-Pin, Schlage® C Keyed Random	085057	5
<b>4707LN - Entry Lock (Small Format Interchangeable Core)</b>						
BAU	4707LN	613E	497 ANSI	Less Core	085388	5
BAU	4707LN	626	497 ANSI	Less Core	085058	5
<b>4708LN - Classroom Lock</b>						
AU	4708LN	613E	497 ANSI	1804, 6-Pin, PARA Keyed Random	085389	5
AU	4708LN	613E	497 ANSI	2804, 6-Pin, Schlage® C Keyed Random	085390	5
AU	4708LN	626	497 ANSI	1804, 6-Pin, PARA Keyed Random	085059	5
AU	4708LN	626	497 ANSI	2804, 6-Pin, Schlage® C Keyed Random	085060	5
MO	4708LN	613E	497 ANSI	1804, 6-Pin, PARA Keyed Random	085393	5
MO	4708LN	613E	497 ANSI	2804, 6-Pin, Schlage® C Keyed Random	085394	5
MO	4708LN	626	497 ANSI	1804, 6-Pin, PARA Keyed Random	085245	5
MO	4708LN	626	497 ANSI	2804, 6-Pin, Schlage® C Keyed Random	085246	5
PB	4708LN	613E	497 ANSI	1804, 6-Pin, PARA Keyed Random	085391	5
PB	4708LN	613E	497 ANSI	2804, 6-Pin, Schlage® C Keyed Random	085392	5
PB	4708LN	626	497 ANSI	1804, 6-Pin, PARA Keyed Random	085061	5
PB	4708LN	626	497 ANSI	2804, 6-Pin, Schlage® C Keyed Random	085062	5
<b>4708LN - Classroom Lock (Small Format Interchangeable Core)</b>						
BAU	4708LN	613E	497 ANSI	Less Core	085395	5
BAU	4708LN	626	497 ANSI	Less Core	085063	5

Fax 877-888-2772, email [flashship@assaabloy.com](mailto:flashship@assaabloy.com) or use Online Order Entry at [www.assaabloydss.com/extranet](http://www.assaabloydss.com/extranet) by clicking the FlashShip™ icon

Note: FlashShip™ reserves the right to limit quantities.





Augusta - AU

Design	Model #	Finish	Strike	Cylinder	FlashShip™ #	Approx. Wt. Each (Lbs)
<b>5301LN - Passage or Closet Latch</b>						
AU	5301LN	626	497 ANSI	—	086524	4
<b>5302LN - Privacy, Bedroom or Bath Lock</b>						
AU	5302LN	626	497 ANSI	—	086525	4
<b>5305LN - STOREROOM OR CLOSET LOCK</b>						
AU	5305LN	626	497 ANSI	Less Cylinder	086526	4
AU	5305LN	626	497 ANSI	1802, 6-Pin, PARA Keyed Random	086527	5
AU	5305LN	626	497 ANSI	1802, 6-Pin, PARA 0-Bitted	086530	5
AU	5305LN	626	497 ANSI	2802, 6-Pin, Schlage® C Keyed Random	086529	5
AU	5305LN	626	497 ANSI	2802, 6-Pin, Schlage® C 0-Bitted	086528	5
<b>5307LN - Entry Lock</b>						
AU	5307LN	626	497 ANSI	Less Cylinder	086531	5
AU	5307LN	626	497 ANSI	1802, 6-Pin, PARA Keyed Random	086532	5
AU	5307LN	626	497 ANSI	1802, 6-Pin, PARA 0-Bitted	086535	5
AU	5307LN	626	497 ANSI	2802, 6-Pin, Schlage® C Keyed Random	086534	5
AU	5307LN	626	497 ANSI	2802, 6-Pin, Schlage® C 0-Bitted	086533	5

Fax 877-888-2772, email [flashship@assaabloy.com](mailto:flashship@assaabloy.com) or use  
 Online Order Entry at [www.assaabloydss.com/extranet](http://www.assaabloydss.com/extranet) by clicking the FlashShip™ icon  
 Note: FlashShip™ reserves the right to limit quantities.

Copyright © 2017-2020, ASSA ABLOY Door Security Solutions, an ASSA ABLOY Group company. All rights reserved.  
 Reproduction in whole or in part without the express written permission of ASSA ABLOY Door Security Solutions is prohibited.

Part of ASSA ABLOY

# 4600LN Series Grade 2 Cylindrical Locks 2-3/4" Backset



Augusta - AU



Monroe - MO



Pacific Beach - PB

Design	Model #	Finish	Strike	Cylinder	FlashShip™ #	Approx. Wt. Each (Lbs)
<b>4601LN - Passage or Closet Latch</b>						
AU	4601LN	613E	497 ANSI	—	085307	4
AU	4601LN	626	497 ANSI	—	085089	4
MO	4601LN	613E	497 ANSI	—	085360	4
MO	4601LN	626	497 ANSI	—	085247	4
PB	4601LN	613E	497 ANSI	—	085308	4
PB	4601LN	626	497 ANSI	—	085090	4
<b>4602LN - Privacy, Bedroom or Bath Lock</b>						
AU	4602LN	613E	497 ANSI	—	085309	4
AU	4602LN	626	497 ANSI	—	085091	4
MO	4602LN	613E	497 ANSI	—	085361	4
MO	4602LN	626	497 ANSI	—	085248	4
PB	4602LN	613E	497 ANSI	—	085310	4
PB	4602LN	626	497 ANSI	—	085092	4
<b>4605LN - Storeroom or Closet Lock</b>						
AU	4605LN	613E	497 ANSI	1806, 6-Pin, PARA Keyed Random	085311	5
AU	4605LN	613E	497 ANSI	2806, 6-Pin, Schlage® C Keyed Random	085312	5
AU	4605LN	626	497 ANSI	1806, 6-Pin, PARA Keyed Random	085093	5
AU	4605LN	626	497 ANSI	2806, 6-Pin, Schlage® C Keyed Random	085094	5
MO	4605LN	613E	497 ANSI	1806, 6-Pin, PARA Keyed Random	085362	5
MO	4605LN	613E	497 ANSI	2806, 6-Pin, Schlage® C Keyed Random	085363	5
MO	4605LN	626	497 ANSI	1806, 6-Pin, PARA Keyed Random	085249	5
MO	4605LN	626	497 ANSI	2806, 6-Pin, Schlage® C Keyed Random	085250	5
PB	4605LN	613E	497 ANSI	1806, 6-Pin, PARA Keyed Random	085313	5
PB	4605LN	613E	497 ANSI	2806, 6-Pin, Schlage® C Keyed Random	085314	5
PB	4605LN	626	497 ANSI	1806, 6-Pin, PARA Keyed Random	085095	5
PB	4605LN	626	497 ANSI	2806, 6-Pin, Schlage® C Keyed Random	085096	5
<b>4605LN - Storeroom or Closet Lock (Small Format Interchangeable Core)</b>						
BAU	4605LN	613E	497 ANSI	Less Core	085315	5
BAU	4605LN	626	497 ANSI	Less Core	085097	5
<b>4607LN - Entry Lock</b>						
AU	4607LN	613E	497 ANSI	1806, 6-Pin, PARA Keyed Random	085316	5
AU	4607LN	613E	497 ANSI	2806, 6-Pin, Schlage® C Keyed Random	085317	5
AU	4607LN	626	497 ANSI	1806, 6-Pin, PARA Keyed Random	085098	5
AU	4607LN	626	497 ANSI	2806, 6-Pin, Schlage® C Keyed Random	085099	5
MO	4607LN	613E	497 ANSI	1806, 6-Pin, PARA Keyed Random	085364	5
MO	4607LN	613E	497 ANSI	2806, 6-Pin, Schlage® C Keyed Random	085365	5
MO	4607LN	626	497 ANSI	1806, 6-Pin, PARA Keyed Random	085251	5
MO	4607LN	626	497 ANSI	2806, 6-Pin, Schlage® C Keyed Random	085252	5
PB	4607LN	613E	497 ANSI	1806, 6-Pin, PARA Keyed Random	085318	5
PB	4607LN	613E	497 ANSI	2806, 6-Pin, Schlage® C Keyed Random	085319	5
PB	4607LN	626	497 ANSI	1806, 6-Pin, PARA Keyed Random	085100	5
PB	4607LN	626	497 ANSI	2806, 6-Pin, Schlage® C Keyed Random	085101	5

Fax 877-888-2772, email [flashship@assaabloy.com](mailto:flashship@assaabloy.com) or use Online Order Entry at [www.assaabloydss.com/extranet](http://www.assaabloydss.com/extranet) by clicking the FlashShip™ icon  
 Note: FlashShip™ reserves the right to limit quantities.



Augusta - AU



Monroe - MO



Pacific Beach - PB

Design	Model #	Finish	Strike	Cylinder	FlashShip™ #	Approx. Wt. Each (Lbs)
<b>4607LN - Entry Lock (Small Format Interchangeable Core)</b>						
BAU	4607LN	613E	497 ANSI	Less Core	085320	5
BAU	4607LN	626	497 ANSI	Less Core	085102	5
<b>4608LN - Classroom Lock</b>						
AU	4608LN	613E	497 ANSI	1806, 6-Pin, PARA Keyed Random	085321	5
AU	4608LN	613E	497 ANSI	2806, 6-Pin, Schlage® C Keyed Random	085322	5
AU	4608LN	626	497 ANSI	1806, 6-Pin, PARA Keyed Random	085103	5
AU	4608LN	626	497 ANSI	2806, 6-Pin, Schlage® C Keyed Random	085104	5
MO	4608LN	613E	497 ANSI	1806, 6-Pin, PARA Keyed Random	085366	5
MO	4608LN	613E	497 ANSI	2806, 6-Pin, Schlage® C Keyed Random	085367	5
MO	4608LN	626	497 ANSI	1806, 6-Pin, PARA Keyed Random	085253	5
MO	4608LN	626	497 ANSI	2806, 6-Pin, Schlage® C Keyed Random	085254	5
PB	4608LN	613E	497 ANSI	1806, 6-Pin, PARA Keyed Random	085323	5
PB	4608LN	613E	497 ANSI	2806, 6-Pin, Schlage® C Keyed Random	085324	5
PB	4608LN	626	497 ANSI	1806, 6-Pin, PARA Keyed Random	085105	5
PB	4608LN	626	497 ANSI	2806, 6-Pin, Schlage® C Keyed Random	085106	5
<b>4608LN - Classroom Lock (Small Format Interchangeable Core)</b>						
BAU	4608LN	613E	497 ANSI	Less Core	085325	5
BAU	4608LN	626	497 ANSI	Less Core	085107	5
<b>4628LN - Communicating Passage Lock</b>						
AU	4628LN	613E	497 ANSI	—	085326	5
AU	4628LN	626	497 ANSI	—	085108	5
MO	4628LN	613E	497 ANSI	—	085368	5
MO	4628LN	626	497 ANSI	—	085255	5
PB	4628LN	613E	497 ANSI	—	085327	5
PB	4628LN	626	497 ANSI	—	085109	5
<b>4655LN - Dummy Trim</b>						
AU	4655LN	613E	—	—	085328	2
AU	4655LN	626	—	—	085110	2
MO	4655LN	613E	—	—	085369	2
MO	4655LN	626	—	—	085256	2
PB	4655LN	613E	—	—	085329	2
PB	4655LN	626	—	—	085111	2

Fax 877-888-2772, email [flashship@assaabloy.com](mailto:flashship@assaabloy.com) or use  
 Online Order Entry at [www.assaabloydss.com/extranet](http://www.assaabloydss.com/extranet) by clicking the FlashShip™ icon  
 Note: FlashShip™ reserves the right to limit quantities.

Copyright © 2017-2020, ASSA ABLOY Door Security Solutions, an ASSA ABLOY Group company. All rights reserved.  
 Reproduction in whole or in part without the express written permission of ASSA ABLOY Door Security Solutions is prohibited.

Part of ASSA ABLOY



Carolina - CA

Design	Model #	Finish	Strike	Cylinder	FlashShip™ #	Approx. Wt. Each (Lbs)
<b>4601 - Passage or Closet Latch</b>						
CA	4601	630	371	—	085257	2
<b>4602 - Privacy, Bedroom or Bath Lock</b>						
CA	4602	630	371	—	085258	2
<b>4605 - Storeroom or Closet Lock</b>						
CA	4605	630	371	1805, 6-Pin, PARA Keyed Random	085262	2.5
CA	4605	630	371	2805, 6-Pin, Schlage® C Keyed Random	085264	2.5
<b>4605 - Storeroom or Closet Lock (Small Format Interchangeable Core)</b>						
BCA	4605	630	371	Less Core	085266	2.5
<b>4607 - Entry Lock</b>						
CA	4607	630	371	1805, 6-Pin, PARA Keyed Random	085270	2.5
CA	4607	630	371	2805, 6-Pin, Schlage® C Keyed Random	085272	2.5
<b>4607 - Entry Lock (Small Format Interchangeable Core)</b>						
BCA	4607	630	371	Less Core	085274	2.5
<b>4608 - Classroom Lock</b>						
CA	4608	630	371	1805, 6-Pin, PARA Keyed Random	085281	2.5
CA	4608	630	371	2805, 6-Pin, Schlage® C Keyed Random	085283	2.5
<b>4608 - Classroom Lock (Small Format Interchangeable Core)</b>						
BCA	4608	630	371	Less Core	085285	2.5
<b>4655 - Dummy Trim</b>						
CA	4655	630	—	—	085286	1

Fax 877-888-2772, email [flashship@assaabloy.com](mailto:flashship@assaabloy.com) or use Online Order Entry at [www.assaabloydss.com/extranet](http://www.assaabloydss.com/extranet) by clicking the FlashShip™ icon

Note: FlashShip™ reserves the right to limit quantities.



Latchbolts						
Model #	Finish	Front	Backset	Front Width	FlashShip #	Approx. Wt. Each (Lbs)
<b>Plain</b>						
MCP238	630	Square	2-3/8"	1"	086037	1
MCP238	613E	Square	2-3/8"	1"	086039	1
<b>Deadlocking</b>						
MCD238	630	Square	2-3/8"	1"	086038	1
MCD238	613E	Square	2-3/8"	1"	086040	1
Strikes for Cylindrical Locks						
Model #	Finish	Description	FlashShip #	Approx. Wt. Each (lbs)		
70S	626	Full lip Strike with anti-rattle tab	086041	1		
70S	613E	Full lip Strike with anti-rattle tab	086044	1		
71S	626	Full lip Strike with anti-rattle tab, rounded corners	086042	1		
71S	613E	Full lip Strike with anti-rattle tab, rounded corners	086045	1		
371	626	T-Strike for knob & lever	086043	1		
371	613E	T-Strike for knob & lever	086046	1		
497	626	ANSI 4-7/8" Curved Lip Strike, 1-1/2" Lip to Center	086092	1		

Fax 877-888-2772, email [flashship@assaabloy.com](mailto:flashship@assaabloy.com) or use  
 Online Order Entry at [www.assaabloydss.com/extranet](http://www.assaabloydss.com/extranet) by clicking the FlashShip™ icon  
 Note: FlashShip™ reserves the right to limit quantities.

Copyright © 2017-2020, ASSA ABLOY Door Security Solutions, an ASSA ABLOY Group company. All rights reserved.  
 Reproduction in whole or in part without the express written permission of ASSA ABLOY Door Security Solutions is prohibited.

Part of ASSA ABLOY

# D Series Grade 2 Cylindrical Deadbolts



D292 Deadbolt



D212 Deadbolt



B-D112 Deadbolt

Model #	Finish	Strike	Cylinder	FlashShip™ #	Approx. Wt. Each (Lbs)
<b>Cylinder x Thumbturn</b>					
D112	613E	D243	2807, 6-Pin, Schlage® C Keyed Random	086050	2
D112	626	D243	1807, 6-Pin, PARA Keyed Random	086047	2
D112	626	D243	2807, 6-Pin, Schlage® C Keyed Random	086049	2
D212	613E	D243	1807, 6-Pin, PARA Keyed Random	085337	2
D212	613E	D243	2807, 6-Pin, Schlage® C Keyed Random	085338	2
D212	626	D243	1807, 6-Pin, PARA Keyed Random	085133	2
D212	626	D243	2807, 6-Pin, Schlage® C Keyed Random	085134	2
<b>Cylinder x Thumbturn (Small Format Interchangeable Core)</b>					
B-D112	626	D243	Less Core	086051	2
B-D212	626	D243	Less Core	085135	2
<b>Cylinder x Cylinder</b>					
D122	626	D243	1808, 6-Pin, PARA Keyed Random	086053	2
D122	626	D243	2808, 6-Pin, Schlage® C Keyed Random	086055	2
D222	626	D243	1808, 6-Pin, PARA Keyed Random	085136	2
D222	626	D243	2808, 6-Pin, Schlage® C Keyed Random	085137	2
<b>Cylinder x Cylinder (Small Format Interchangeable Core)</b>					
B-D122	626	D243	Less Core	086057	2
B-D222	626	D243	Less Core	085138	2
<b>Cylinder x Classroom</b>					
D162	626	D243	1807, 6-Pin, PARA Keyed Random	086059	2
D162	626	D243	2807, 6-Pin, Schlage® C Keyed Random	086061	2
D262	626	D243	1807, 6-Pin, PARA Keyed Random	086065	2
D262	626	D243	2807, 6-Pin, Schlage® C Keyed Random	086066	2
<b>Cylinder x Classroom (Small Format Interchangeable Core)</b>					
B-D262	626	D243	Less Core	086069	2
<b>Blank Plate x Thumbturn</b>					
D242	613E	D243	—	085343	2
D242	626	D243	—	085139	2
<b>Occupancy Indicator x Thumbturn</b>					
D292	613E	D243	—	085419	2
D292	626	D243	—	085418	2
Model #	Finish	Backset	Throw	FlashShip™ #	Approx. Wt. Each (Lbs)
<b>Deadbolt Assemblies</b>					
D38	613E	2-3/8"	1"	086072	1
D38	626	2-3/8"	1"	086071	1

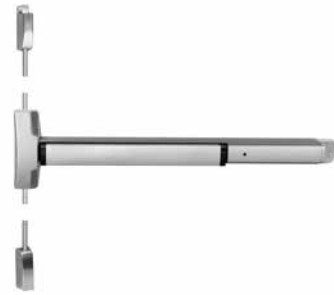
Fax 877-888-2772, email [flashship@assaabloy.com](mailto:flashship@assaabloy.com) or use Online Order Entry at [www.assaabloydss.com/extranet](http://www.assaabloydss.com/extranet) by clicking the FlashShip™ icon  
 Note: FlashShip™ reserves the right to limit quantities.



7110 Surface Vertical Rod



6000 Rim



6110 Surface Vertical Rod

Model #	Description	Finish	Hand*	Strike	FlashShip™ #	Approx. Wt. Each (Lbs)
<b>7100 - Rim</b>						
7100-36	Rim Exit Device, 36"	630	—	757F	086547	14
7100F-36	3 Hour Fire Rated Rim Exit Device, 36"	630	—	757F	086548	14
<b>7110 - Surface Vertical Rod</b>						
7110-36	SVR Exit Device, 36"	630	RHR	791 Top, 790 Bottom	086550	18
7110-36	SVR Exit Device, 36"	630	LHR	791 Top, 790 Bottom	086549	18
7110F-36	3 Hour Fire Rated SVR Exit Device, 36"	630	RHR	791 Top, 790 Bottom	086551	18
7110F-36	3 Hour Fire Rated SVR Exit Device, 36"	630	LHR	791 Top, 790 Bottom	086552	18
<b>7170 - Surface Vertical Rod - LBR</b>						
7170F90LBR	90 Minute Fire Rated SVR Exit Device, Less Bottom Rod, 36"	630	—	726	086554	22
<b>6100 - Rim</b>						
6100-36	Rim Exit Device, 36"	630	—	757F	086111	11
6100-48	Rim Exit Device, 48"	630	—	757F	086112	11
6100F-36	3 Hour Fire Rated Rim Exit Device, 36"	630	—	757F	086113	11
6100F-48	3 Hour Fire Rated Rim Exit Device, 48"	630	—	757F	086114	11
<b>6110 - Surface Vertical Rod</b>						
6170-36	SVR Exit Device, 36"	630	RHR	726 Top, 790 Bottom	086115	15
6170F-36	SVR Exit Device, 36"	630	RHR	726 Top, 790 Bottom	086117	15
6170ED(F)90 x LBR	90 Minute Fire Rated SVR Exit Device, Less Bottom Rod, 36"	630	RHR	726 Top, 790 Bottom	086119	15
6100-A-ALR-36	Rim Exit Device, Alarmed with Red Screenprinted Pushpad	BSP	RHR	757F	086373	15

Fax 877-888-2772, email [flashship@assaabloy.com](mailto:flashship@assaabloy.com) or use  
 Online Order Entry at [www.assaabloydss.com/extranet](http://www.assaabloydss.com/extranet) by clicking the FlashShip™ icon  
 Note: FlashShip™ reserves the right to limit quantities.

Copyright © 2017-2020, ASSA ABLOY Door Security Solutions, an ASSA ABLOY Group company. All rights reserved.  
 Reproduction in whole or in part without the express written permission of ASSA ABLOY Door Security Solutions is prohibited.

Part of ASSA ABLOY



2100 Rim



2110 Surface Vertical Rod



1800 Rim



1810 Surface Vertical Rod

Model #	Description	Finish	Hand*	Strike	FlashShip™ #	Approx. Wt. Each (Lbs)
<b>2100 - Rim</b>						
2100-36	Rim Exit Device, 36"	630	—	757F	085148	11
2100-36	Rim Exit Device, 36"	689	—	757F	086021	11
2100WS	Rim Exit Device, 36"	689	—	757F	086109	11
2100WS	Rim Exit Device, 36"	630	—	757F	086110	11
2100-48	Rim Exit Device, 48"	630	—	757F	085149	11
2100-48	Rim Exit Device, 48"	689	—	757F	086025	11
2100F-36	3 Hour Fire Rated Rim Exit Device, 36"	630	—	757F	085150	11
2100F-36	3 Hour Fire Rated Rim Exit Device, 36"	689	—	757F	086022	11
2100F-48	3 Hour Fire Rated Rim Exit Device, 48"	630	—	757F	085151	11
2100F-48	3 Hour Fire Rated Rim Exit Device, 48"	689	—	757F	086026	11
<b>2110 - Surface Vertical Rod</b>						
2110-36	SVR Exit Device, 36"	630	RHR	791 Top, 790 Bottom	085152	15
2110-36	SVR Exit Device, 36"	689	RHR	791 Top, 790 Bottom	086023	15
2110F-36	3 Hour Fire Rated SVR Exit Device, 36"	630	RHR	791 Top, 790 Bottom	085154	15
2110F-36	3 Hour Fire Rated SVR Exit Device, 36"	689	RHR	791 Top, 790 Bottom	086024	15
<b>1800 - Rim</b>						
1800-36	Rim Exit Device, 36"	689	—	757F	085163	11
1800-36	Rim Exit Device, 36"	695	—	757F	085287	11
1800-48	Rim Exit Device, 48"	689	—	757F	085164	12
1800F-36	3 Hour Fire Rated Rim Exit Device, 36"	689	—	757F	085165	11
1800F-36	3 Hour Fire Rated Rim Exit Device, 36"	695	—	757F	085289	11
1800F-48	3 Hour Fire Rated Rim Exit Device, 48"	689	—	757F	085166	12
<b>1810 - Surface Vertical Rod</b>						
1810-36	SVR Exit Device, 36"	689	RHR	791 Top, 790 Bottom	085167	15
1810-36	SVR Exit Device, 36"	695	RHR	791 Top, 790 Bottom	085291	15
1810F-36	3 Hour Fire Rated SVR Exit Device, 36"	689	RHR	791 Top, 790 Bottom	085169	15

\*Units are field reversible

Fax 877-888-2772, email [flashship@assaabloy.com](mailto:flashship@assaabloy.com) or use Online Order Entry at [www.assaabloydss.com/extranet](http://www.assaabloydss.com/extranet) by clicking the FlashShip™ icon

Note: FlashShip™ reserves the right to limit quantities.



217F Plate Trim

## 210F Series: Plate Trim

Model #	Finish	Cylinder	FlashShip™ #	Approx. Wt. Each (Lbs)
<b>Dummy Trim Pull Plate</b>				
214F	689	—	085178	1
214F	695	—	085293	1
<b>Nightlatch Cylinder x Pull</b>				
217F	689	Less Cylinder	085179	1
217F	695	Less Cylinder	085294	1

Note: See page 32 for cylinder options



Augusta - AU



Pacific Beach - PB

## 440F Series: Rose Trim

Design	Model #	Finish	Cylinder	FlashShip™ #	Approx. Wt. Each (Lbs)
<b>Nightlatch</b>					
AU	441F	626	1802, 6-Pin, PARA Keyed Random	086019	2.5
AU	441F	626	2802, 6-Pin, Schlage® C Keyed Random	086020	2.5
AU	441F	689	1802, 6-Pin, PARA Keyed Random	086015	2.5
AU	441F	689	2802, 6-Pin, Schlage® C Keyed Random	086016	2.5
PB	441F	626	1802, 6-Pin, PARA Keyed Random	086606	2.5
PB	441F	626	2802, 6-Pin, Schlage® C Keyed Random	086607	2.5
<b>Nightlatch Access by Key (Small Format Interchangeable Core)</b>					
BAU	441F	626	Less Core	086586	2.5
BPB	441F	626	Less Core	086587	2.5
<b>Classroom</b>					
AU	446F	626	1802, 6-Pin, PARA Keyed Random	085180	2.5
AU	446F	626	2802, 6-Pin, Schlage® C Keyed Random	085181	2.5
AU	446F	689	1802, 6-Pin, PARA Keyed Random	086017	2.5
AU	446F	689	2802, 6-Pin, Schlage® C Keyed Random	086018	2.5
AU	446F	695	1802, 6-Pin, PARA Keyed Random	085299	2.5
AU	446F	695	2802, 6-Pin, Schlage® C Keyed Random	085300	2.5
PB	446F	626	1802, 6-Pin, PARA Keyed Random	085182	2.5
PB	446F	626	2802, 6-Pin, Schlage® C Keyed Random	085183	2.5
<b>Classroom (Small Format Interchangeable Core)</b>					
BAU	446F	626	Less Core	085184	2.5
BPB	446F	626	Less Core	086588	2.5
BAU	446F	695	Less Core	085303	2.5
<b>Dummy Free-Wheeling Lever</b>					
AU	448F	626	—	085185	2.5
AU	448F	695	—	085304	2.5
PB	448F	626	—	085186	2.5
PB	448F	695	—	085305	2.5

Fax 877-888-2772, email [flashship@assaabloy.com](mailto:flashship@assaabloy.com) or use  
Online Order Entry at [www.assaabloydss.com/extranet](http://www.assaabloydss.com/extranet) by clicking the FlashShip™ icon

Note: FlashShip™ reserves the right to limit quantities.

Copyright © 2017-2020, ASSA ABLOY Door Security Solutions, an ASSA ABLOY Group company. All rights reserved.  
Reproduction in whole or in part without the express written permission of ASSA ABLOY Door Security Solutions is prohibited.

Part of ASSA ABLOY



426F Escutcheon Trim



M200 Series

## 420F Series: Escutcheon Trim

Design	Model #	Finish	Hand*	Cylinder	FlashShip™ #	Approx. Wt. Each (Lbs)
<b>Classroom/Storeroom</b>						
AU	426F	630	RHR	Less Cylinder	085187	2.7
AU	426F	695	RHR	Less Cylinder	085295	2.7
PB	426F	630	RHR	Less Cylinder	085188	2.7
PB	426F	695	RHR	Less Cylinder	085296	2.7
<b>Passage/Dummy</b>						
AU	428F	630	RHR	—	085189	2.7
AU	428F	695	RHR	—	085297	2.7
PB	428F	630	RHR	—	085190	2.7
PB	428F	695	RHR	—	085298	2.7
PB	448F	695	RHR	—	085305	2.7

Note: See page 32 for cylinder options

\*Units are field reversible

FlashShip™ reserves the right to limit quantities.

The following chart indicates the cylinder finishes used with trims

Trim Finish	Cylinder Finish
630	626
689	626

## M200 Series: Removable Mullions

Model #	Description	FlashShip™ #	Approx. Wt. Each (Lbs)
<b>For 8 Ft. Openings</b>			
M200-8	Complete for Panic Exits	085202	37
M200F-8	Complete for Fire Exits	085203	37

Fax 877-888-2772, email [flashship@assaabloy.com](mailto:flashship@assaabloy.com) or use Online Order Entry at [www.assaabloydss.com/extranet](http://www.assaabloydss.com/extranet) by clicking the FlashShip™ icon

Note: FlashShip™ reserves the right to limit quantities.





620F Escutcheon Trim

## 620F Series: Escutcheon Trim

Design	Model #	Finish	Hand*	FlashShip™ #	Approx. Wt. Each (Lbs)
<b>Exit Only/Blank Plate</b>					
—	620F	630	—	086266	2
<b>Classroom/Storeroom</b>					
AU	626F	630	RHR	086126	5
PB	626F	630	RHR	086127	5
<b>Passage/Dummy</b>					
AU	628F	630	RHR	086128	5
PB	628F	630	RHR	086129	5

## 630F Series: Escutcheon Trim

Design	Model #	Finish	Hand*	Cylinder	FlashShip™ #	Approx. Wt. Each (Lbs)
<b>Nightlatch</b>						
—	632F	630	RHR	Less Cylinder	086243	5
<b>Dummy</b>						
—	634F	630	RHR	Less Cylinder	086244	5

Note: See page 32 for cylinder options  
 \*Units are field reversible-

Fax 877-888-2772, email [flashship@assaabloy.com](mailto:flashship@assaabloy.com) or use  
 Online Order Entry at [www.assaabloydss.com/extranet](http://www.assaabloydss.com/extranet) by clicking the FlashShip™ icon  
 Note: FlashShip™ reserves the right to limit quantities.

Copyright © 2017-2020, ASSA ABLOY Door Security Solutions, an ASSA ABLOY Group company. All rights reserved.  
 Reproduction in whole or in part without the express written permission of ASSA ABLOY Door Security Solutions is prohibited.

Part of ASSA ABLOY



1109 x626

## Cylinders for Exit Device Trims and Mullions

Model #	Description	Key Section	Finish	Collar Size Included	FlashShip #	Approx. Wt. Each (Lbs)
<b>Rim Cylinders</b>						
1109	6-Pin, Keyed Random	PARA	626	1765.250	085003	0.4
1109	6-Pin, Keyed Random	PARA	613E	1765.250	085344	0.4
2109	6-Pin, Schlage® Keyed Random	C	626	1765.250	085004	0.4
2109	6-Pin, Schlage® Keyed Random	C	613E	1765.250	085345	0.4
<b>Rim Cylinders (Interchangeable Core)</b>						
1193 x 1-7/16"	LFIC, 6-Pin, 0-Bitted	GA	626	1765.250	086558	1
1193 x 1-7/16"	LFIC, 6-Pin, 0-Bitted	PARA	626	1765.250	086559	1
1193 x 1-7/16"	LFIC, 6-Pin, 0-Bitted	GA	626	1765.469	086557	1
1193 x 1-7/16"	LFIC, 6-Pin, 0-Bitted	PARA	626	1765.469	086560	1
1193 x 1-7/16"	LFIC, 6-Pin, 0-Bitted	GA	626	1765.656	086561	1
1193 x 1-7/16"	LFIC, 6-Pin, 0-Bitted	PARA	626	1765.656	086562	1
<b>Rim Housings</b>						
1212 x 1-7/16"	LFIC Housing Only, Less Core	—	626	1765.250	086566	0.5
1212 x 1-7/16"	LFIC Housing Only, Less Core	—	626	1765.469	086565	0.5
1212 x 1-7/16"	LFIC Housing Only, Less Core	—	626	1765.656	086567	0.5
K680 x 1-3/8"	SFIC Housing Only, Less Core	—	613E	1765.375	085346	0.5
K680 x 1-3/8"	SFIC Housing Only, Less Core	—	626	1765.187	086596	0.5
K680 x 1-3/8"	SFIC Housing Only, Less Core	—	626	1765.375	085005	0.5
K680 x 1-3/8"	SFIC Housing Only, Less Core	—	626	1765.406	086597	0.5
K680 x 1-3/8"	SFIC Housing Only, Less Core	—	626	1765.563	086598	0.5
<b>Mortise Cylinders for SDA 16</b>						
2153 x 1-1/8"	6-Pin, Keyed Random	PARA	626	1765.312	086576	0.4
2553 x 1-1/8"	6-Pin, Schlage® Keyed Random	C	626	1765.312	086579	0.4
<b>Interchangeable Cores (Large Format)</b>						
1210	Core Only, 6-Pin, 0-Bitted	GA	—	626	086563	0.3
1210	Core Only, 6-Pin, 0-Bitted	PARA	—	626	086564	0.3

Fax 877-888-2772, email [flashship@assaabloy.com](mailto:flashship@assaabloy.com) or use Online Order Entry at [www.assaabloydss.com/extranet](http://www.assaabloydss.com/extranet) by clicking the FlashShip™ icon

Note: FlashShip™ reserves the right to limit quantities.



SDA16

## Miscellaneous Hardware for Exit Devices

Model #	Description	Finish	FlashShip #	Approx. Wt. Each (Lbs)
<b>Extension Rods - For All Exit Device Series</b>				
2010-12	12" (305mm) Length	630	085204	1
2010-12	12" (305mm) Length	689	085205	1
2010-12	12" (305mm) Length	695	085306	1
<b>Shim Kits for 7000 Series</b>				
723	For Rim, SquareBolt®, CVR and Mortise Devices	693	086590	2
724	For SVR Devices	693	086591	3
<b>Shim Kits for 2100 Series</b>				
223	For 2100(F) rim	693	086027	1
224	For 2110(F) SVR	693	086028	1
<b>Strikes</b>				
790	Standard Floor Strike	693	086592	0.1
791	Standard Top Strike	693	086593	0.1
793	Optional Rim Strike for Double Door Applications without a Mullion	—	086029	1.5
<b>Miscellaneous</b>				
7000	Long Spindle (Tailpiece) Kit for All 620F & 630F Series Trim, 2" to 2-1/2" Thick Door	—	086556	0.1
ECK1	Flush End Cap Kit	630	086594	1
ECK7	Impact Resistant End Cap Kit	630	086595	1
60-7000-0815	Schlage® Cam and Housing Assembly	—	086589	0.5
<b>Electrified Options*</b>				
7116	Alarm Kit for 7000 Series Exit Devices	630	086553	2

Note: FlashShip™ reserves the right to limit quantities.

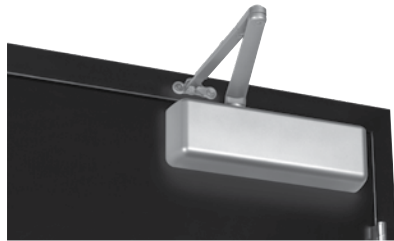
## Stand-Alone Door Alarm

Model #	Description	Finish	FlashShip™ #	Approx. Wt. Each (Lbs)
SDA16	Battery-operated door alarm	—	086030	3

Fax 877-888-2772, email [flashship@assaabloy.com](mailto:flashship@assaabloy.com) or use  
 Online Order Entry at [www.assaabloydss.com/extranet](http://www.assaabloydss.com/extranet) by clicking the FlashShip™ icon  
 Note: FlashShip™ reserves the right to limit quantities.

Copyright © 2017-2020, ASSA ABLOY Door Security Solutions, an ASSA ABLOY Group company. All rights reserved.  
 Reproduction in whole or in part without the express written permission of ASSA ABLOY Door Security Solutions is prohibited.

Part of ASSA ABLOY



5801 Non-Hold Open



5821T Hold Open

5800 Series: Cast Iron

Model #	Description	Finish	FlashShip™ #	Approx. Wt. Each (Lbs)
<b>Non-Hold Open With Sleeve Nuts</b>				
5801 x SN	Multi-Size 1-6	689	085230	12
5801 x SN	Multi-Size 1-6	690	085351	12
5801 x BSP	Multi-Size 1-6	BSP	086601	12
<b>Non-Hold Open, With Sleeve Nuts</b>				
5821 x SN	Stop Only, Multi-Size 1-6	689	085232	14
5821 x SN	Stop Only, Multi-Size 1-6	690	085352	14
5831 x SNB	Stop Only, Multi-Size 1-6	689	086249	14
5831 x SNB	Stop Only, Multi-Size 1-6	690	086250	14
<b>Hold Open With Sleeve Nuts</b>				
5811 x SN	Multi-Size 1-6	689	085231	12
5811 x SN	Multi-Size 1-6	690	085353	12
<b>Hold Open, With Sleeve Nuts</b>				
5821T x SN	Holder/Stop Thumbturn, Multi-Size 1-6	689	085233	14
5821T x SN	Holder/Stop Thumbturn, Multi-Size 1-6	690	085354	14
5831T x SNB	Holder/Stop Thumbturn, Multi-Size 1-6	689	086251	14
5831T x SNB	Holder/Stop Thumbturn, Multi-Size 1-6	690	086252	14
<b>Accessories</b>				
SN-134	Sleeve Nut Pkg., 1-3/4" Door	689	085225	0.2
SN-134	Sleeve Nut Pkg., 1-3/4" Door	690	085355	0.2
5800RDP	Narrow Frame Drop Plate, Regular Arm	689	086031	4
5800RDP	Narrow Frame Drop Plate, Regular Arm	690	086032	4
5800PDP	Narrow Top Rail Drop Plate, Parallel Arm	689	086033	4
5800PDP	Narrow Top Rail Drop Plate, Parallel Arm	690	086034	4

- Notes:
- Closers tri-packed
  - Case quantity = 3
  - SN-134 = 4 per pack; supplied standard with all 5800 door closers
  - FlashShip™ reserves the right to limit quantities
  - For heavy-duty parallel rigid arm applications, specify 5821 or 5821T, stop is removable

Fax 877-888-2772, email [flashship@assaabloy.com](mailto:flashship@assaabloy.com) or use Online Order Entry at [www.assaabloydss.com/extranet](http://www.assaabloydss.com/extranet) by clicking the FlashShip™ icon  
 Note: FlashShip™ reserves the right to limit quantities.



2701 Non-Hold Open



2721T Hold Open

## 2700 Series: Architectural

Model #	Description	Finish	FlashShip™ #	Approx. Wt. Each (Lbs)
<b>Non-Hold Open, With Sleeve Nuts</b>				
2701 x SN	Multi-Size 1-6	689	085191	6.5
2701 x SN	Multi-Size 1-6	690	085347	6.5
2701 x BSP	Multi-Size 1-6	BSP	086600	6.5
<b>Non-Hold Open, With Sleeve Nuts</b>				
2721 x SN	Stop Only, Multi-Size 1-6	689	085193	7.75
2721 x SN	Stop Only, Multi-Size 1-6	690	085348	7.75
<b>Hold Open, With Sleeve Nuts</b>				
2711 x SN	Multi-Size 1-6	689	085192	6.5
2711 x SN	Multi-Size 1-6	690	085349	6.5
<b>Hold Open, With Sleeve Nuts</b>				
2721T x SN	Holder/Stop Thumbturn, Multi-Size 1-6	689	085194	7.75
2721T x SN	Holder/Stop Thumbturn, Multi-Size 1-6	690	085350	7.75
2731 x SNB	Holder/Stop Thumbturn, Multi-Size 1-6	689	086245	8
2731 x SNB	Holder/Stop Thumbturn, Multi-Size 1-6	690	086246	8
2731T x SNB	Holder/Stop Thumbturn, Multi-Size 1-6	689	086247	8
2731T x SNB	Holder/Stop Thumbturn, Multi-Size 1-6	690	086248	8
<b>Accessories</b>				
SN-134	Sleeve Nut Pkg., 1-3/4" Door	689	085225	0.2
SN-134	Sleeve Nut Pkg., 1-3/4" Door	690	085355	0.2
3148	Narrow Top Rail Drop Plate, Parallel Arm	689	086088	2
3148	Narrow Top Rail Drop Plate, Parallel Arm	690	086089	2
3158	Exposed-Back/Narrow Top Rail Drop Plate	689	086035	2
3158	Exposed-Back/Narrow Top Rail Drop Plate	690	086036	2

### Notes:

- Closers tri-packed
- Case quantity:  
2701 = 6  
2711, 2721, 2721T = 4
- SN-134 = 4 per pack; supplied standard with all 2700 door closers
- FlashShip™ reserves the right to limit quantities
- For heavy-duty parallel rigid arm applications, specify 2721 or 2721T, stop is removable

Fax 877-888-2772, email [flashship@assaabloy.com](mailto:flashship@assaabloy.com) or use  
Online Order Entry at [www.assaabloydss.com/extranet](http://www.assaabloydss.com/extranet) by clicking the FlashShip™ icon

Note: FlashShip™ reserves the right to limit quantities.

Copyright © 2017-2020, ASSA ABLOY Door Security Solutions, an ASSA ABLOY Group company. All rights reserved.  
Reproduction in whole or in part without the express written permission of ASSA ABLOY Door Security Solutions is prohibited.

Part of ASSA ABLOY



1101BF Non-Hold Open



YDC200 Standard Arm

### 1100 Series: Industrial

Model #	Description	Finish	FlashShip™ #	Approx. Wt. Each (Lbs)
<b>Non-Hold Open With Sleeve Nuts</b>				
1101BF x SN	Multi-Size 1-4	689	085227	6
1101BF x SN	Multi-Size 1-4	690	085357	6
1101BF X BSP	Multi-Size 1-4	BSP	086602	6
1101BF COV x SN	Multi-Size 1-4, with Cover	689	086093	6
1101BF COV x SN	Multi-Size 1-4, with Cover	690	086094	6
1104BC x SNB	Size 4	689	086104	6
1104BC x SNB	Size 4	690	086105	6
<b>Hold Open With Sleeve Nuts</b>				
1111BF x SN	Multi-Size 1-4	689	085228	8
1111BF x SN	Multi-Size 1-4	690	085358	8
<b>Accessories</b>				
1100COV	Optional Cover for 1100 Series	689	085229	0.5
1100COV	Optional Cover for 1100 Series	690	085359	0.5
SN-134	Sleeve Nut Pkg., 1-3/4" Door	689	085225	0.2
SN-134	Sleeve Nut Pkg., 1-3/4" Door	690	085355	0.2

Notes:  
 - Closers tri-packed  
 - Case quantity:  
 1101BF = 6  
 1111BF = 4  
 - SN-134 = 4 per pack; supplied standard with all 1100 door closers  
 - FlashShip™ reserves the right to limit quantities.

### YDC200 Series: Economy

Model #	Description	Finish	FlashShip™ #	Approx. Wt. Each (Lbs)
YDC201	Tri-packed	689	086280	6
YDC204	Tri-packed	689	086281	6
YDC201	Tri-packed	690	086282	6
YDC204	Tri-packed	690	086283	6
SN-134	Sleeve Nuts	689	085225	0.2
SN-134	Sleeve Nuts	690	085355	0.2
YDC-300	Optional Cover for YDC200	689	086284	0.5
YDC-300	Optional Cover for YDC200	690	086285	0.5

Fax 877-888-2772, email [flashship@assaabloy.com](mailto:flashship@assaabloy.com) or use Online Order Entry at [www.assaabloydss.com/extranet](http://www.assaabloydss.com/extranet) by clicking the FlashShip™ icon  
 Note: FlashShip™ reserves the right to limit quantities.





nexTouch™  
Cylindrical



nexTouch™  
Mortise



nexTouch™  
Exit Trim

Design	Model #	Description	Finish	Cylinder	FlashShip™ #	Approx. Wt. Each (Lbs)
<b>Cylindrical With Cylinder Override</b>						
AU	NTB610-NR	Pushbutton keypad, no radio	626	1803-53L, 6-pin, PARA Keyed Random	084612	7.2
AU	NTB620-NR	Capacitive touchscreen, no radio	626	1803-53L, 6-pin, PARA Keyed Random	084616	7.2
AU	NTB610-NR	Pushbutton keypad, no radio	626	100CV1, 6-pin, Arrow Keyed Random	084680	7.2
AU	NTB620-NR	Capacitive touchscreen, no radio	626	100CV1, 6-pin, Arrow Keyed Random	084684	7.2
AU	NTB620-NR	Capacitive touchscreen, no radio	626	2803-53L, 6-pin, Schlage® C	084688	7.2
BAU	NTB620-NR	Capacitive touchscreen, no radio	626	Small Format Interchangeable Core, less core	084689	7.2
AU	NTB610-NR	Pushbutton keypad, no radio	626	2803-53L, 6-pin, Schlage® C	084690	7.2
BAU	NTB610-NR	Pushbutton keypad, no radio	626	Small Format Interchangeable Core, less core	084691	7.2
<b>Mortise Deadbolt with Cylinder Override</b>						
AU	NTM625-NR	Capacitive touchscreen, no radio	626	2153, PARA Keyed Alike	086372	6
<b>Exit Device Trim with Cylinder Override</b>						
AU	NTT610-NR	Pushbutton keypad, no radio	626	2153, Keyed Random	086500	9.2
AU	NTT620-NR	Capacitive touchscreen, no radio	626	2153, Keyed Random	086501	9.2

Fax 877-888-2772, email [flashship@assaabloy.com](mailto:flashship@assaabloy.com) or use  
Online Order Entry at [www.assaabloydss.com/extranet](http://www.assaabloydss.com/extranet) by clicking the FlashShip™ icon  
Note: FlashShip™ reserves the right to limit quantities.

Copyright © 2017-2020, ASSA ABLOY Door Security Solutions, an ASSA ABLOY Group company. All rights reserved.  
Reproduction in whole or in part without the express written permission of ASSA ABLOY Door Security Solutions is prohibited.

Part of ASSA ABLOY



Augusta - AU



McClure - MC



Monroe - MO



Pacific Beach - PB



Valdosta - VL



Norwood - NW

Design	Model #	Finish	Strike	Cylinder	Description	FlashShip™ #	Approx. Wt. Each (Lbs)
AU	YH11	US26D	Radius Corner Full Lip	-	Passage w/adjustable latch	D5106701	1.8 lbs
MC	YH11	US15	Radius Corner Full Lip	-	Passage w/adjustable latch	D5105N01	1.8 lbs
MO	YH11	US26D	Radius Corner Full Lip	-	Passage w/adjustable latch	D510W701	1.8 lbs
PB	YH11	US26D	Radius Corner Full Lip	-	Passage w/adjustable latch	D5102701	1.8 lbs
VL	YH11	US15	Radius Corner Full Lip	-	Passage w/adjustable latch	D510VN01	1.8 lbs
VL	YH11	US26D	Radius Corner Full Lip	-	Passage w/adjustable latch	D510V701	1.8 lbs
AU	YH21	US26D	Radius Corner Full Lip	-	Privacy w/ adjustable latch	D5206701	1.8 lbs
MC	YH21	US15	Radius Corner Full Lip	-	Privacy w/ adjustable latch	D5205N01	1.8 lbs
MO	YH21	US26D	Radius Corner Full Lip	-	Privacy w/ adjustable latch	D520W701	1.8 lbs
PB	YH21	US26D	Radius Corner Full Lip	-	Privacy w/ adjustable latch	D5202701	1.8 lbs
VL	YH21	US15	Radius Corner Full Lip	-	Privacy w/ adjustable latch	D520VN01	1.8 lbs
VL	YH21	US26D	Radius Corner Full Lip	-	Privacy w/ adjustable latch	D520V701	1.8 lbs
AU	YH71	US26D	Radius Corner Full Lip	KW 6 Pin	Entry w/adjustable latch	D5406701	2.1 lbs
MC	YH71	US15	Radius Corner Full Lip	KW 6 Pin	Entry w/adjustable latch	D5405N01	2.1 lbs
MO	YH71	US26D	Radius Corner Full Lip	KW 6 Pin	Entry w/adjustable latch	D540W701	2.1 lbs
PB	YH71	US26D	Radius Corner Full Lip	KW 6 Pin	Entry w/adjustable latch	D5402701	2.1 lbs
VL	YH71	US15	Radius Corner Full Lip	KW 6 Pin	Entry w/adjustable latch	D540VN01	2.1 lbs
VL	YH71	US26D	Radius Corner Full Lip	KW 6 Pin	Entry w/adjustable latch	D540V701	2.1 lbs
AU	YH76	US26D	Radius Corner Full Lip	KW 6 Pin	Classroom w/adjustable latch	D5466701	2.1 lbs
MO	YH76	US26D	Radius Corner Full Lip	KW 6 Pin	Classroom w/adjustable latch	D546W701	2.1 lbs
PB	YH76	US26D	Radius Corner Full Lip	KW 6 Pin	Classroom w/adjustable latch	D5462701	2.1 lbs
AU	YH79	US26D	Radius Corner Full Lip	KW 6 Pin	Storeroom w/adjustable latch	D5476701	2.1 lbs
MO	YH79	US26D	Radius Corner Full Lip	KW 6 Pin	Storeroom w/adjustable latch	D547W701	2.1 lbs
PB	YH79	US26D	Radius Corner Full Lip	KW 6 Pin	Storeroom w/adjustable latch	D5472701	2.1 lbs
AU	YH81	US26D	-	-	Dummy	D55367	.5 lbs
MC	YH81	US15	-	-	Dummy, RH	D5545N	.5 lbs
MC	YH81	US15	-	-	Dummy, LH	D5535N	.5 lbs
MO	YH81	US26D	-	-	Dummy	D553W7	.5 lbs
PB	YH81	US26D	-	-	Dummy	D55327	.5 lbs
VL	YH81	US15	-	-	Dummy	D553VN	.5 lbs
VL	YH81	US26D	-	-	Dummy	D553V7	.5 lbs
AU	YH852	US26D	Square Corner	SFIC-LC	Interconnected Lock w/ SFIC, UL listed	A5656756HSFUR	6.3 lbs
NW	YH852	US15	Radius Corner Full Lip	KW 6 Pin	Interconnected Lock w/ adjustable latch, UL listed	A5658N01JUR	6.3 lbs
NW	YH852	US26D	Radius Corner Full Lip	KW 6 Pin	Interconnected Lock w/adjustable latch, UL listed	A5658701JUR	6.3 lbs

For complete product offering, please see the Yale Residential price book.

Fax 877-888-2772, email [flashship@assaabloy.com](mailto:flashship@assaabloy.com) or use Online Order Entry at [www.assaabloydss.com/extranet](http://www.assaabloydss.com/extranet) by clicking the FlashShip™ icon

Note: FlashShip™ reserves the right to limit quantities.



Alpharetta - AL



Keowee - KW



Mesa - ML



Niagara - NL



Vidalia - VI

Design	Model #	Finish	Strike	Cylinder	Description	FlashShip™ #	Approx. Wt. Each (Lbs)
ML	NT101	US26D	Radius Corner Full Lip	-	Passage w/adjustable latch	45101701	1.25 lbs
NL	NT101	US15	Radius Corner Full Lip	-	Passage w/adjustable latch	45108N01	1.25 lbs
VI	NT101	US15	Radius Corner Full Lip	-	Passage w/adjustable latch	4510VN01	1.25 lbs
VI	NT101	US26D	Radius Corner Full Lip	-	Passage w/adjustable latch	4510V701	1.25 lbs
VI	NT101	10BP	Radius Corner Full Lip	-	Passage w/adjustable latch	4510VK01	1.25 lbs
ML	NT201	US26D	Radius Corner Full Lip	-	Privacy w/ adjustable latch	45201701	1.25 lbs
NL	NT201	US15	Radius Corner Full Lip	-	Privacy w/ adjustable latch	45208N01	1.25 lbs
VI	NT201	US15	Radius Corner Full Lip	-	Privacy w/ adjustable latch	4520NV01	1.25 lbs
VI	NT201	US26D	Radius Corner Full Lip	-	Privacy w/ adjustable latch	4520V701	1.25 lbs
VI	NT201	10BP	Radius Corner Full Lip	-	Privacy w/ adjustable latch	4520VK01	1.25 lbs
NL	NT771	US15	Radius Corner Full Lip	KW 5 Pin	Entry w/adjustable latch	45448N01	1.4 lbs
VI	NT771	US15	Radius Corner Full Lip	KW 5 Pin	Entry w/adjustable latch	4544VN01	1.4 lbs
VI	NT771	US26D	Radius Corner Full Lip	KW 5 Pin	Entry w/adjustable latch	4544V701	1.4 lbs
VI	NT771	10BP	Radius Corner Full Lip	KW 5 Pin	Entry w/adjustable latch	4544VK01	1.4 lbs
ML	NT81	US26D	-	-	Dummy	455317	.35 lbs
NL	NT81	US15	-	-	Dummy	45538N	.35 lbs
NL	NT81	US15	-	-	Dummy	45548N	.35 lbs
VI	NT81	US15	-	-	Dummy	4553VN	.35 lbs
VI	NT81	US26D	-	-	Dummy	4553V7	.35 lbs
VI	NT81	10BP	-	-	Dummy	4553VK	.35 lbs
AL	YE11	US15	Radius Corner Full Lip	-	Passage w/adjustable latch	ALPA15	1.38 lbs
KW	YE11	US15	Radius Corner Full Lip	-	Passage w/adjustable latch	KWPA15	1.38 lbs
KW	YE11	US15	Radius Corner Full Lip	-	Passage w/adjustable latch	KWPA15DI	1.38 lbs
AL	YE21	US15	Radius Corner Full Lip	-	Privacy w/adjustable latch	ALPR15	1.38 lbs
KW	YE21	US15	Radius Corner Full Lip	-	Privacy w/adjustable latch	KWPR15	1.38 lbs
KW	YE21	US15	Radius Corner Full Lip	-	Privacy w/adjustable latch	KWPR15DI	1.38 lbs
AL	YE23	US15	Radius Corner Full Lip	-	Privacy w/adjustable latch	ALPRI5A	1 lbs
KW	YE23	US15	Radius Corner Full Lip	-	Privacy w/adjustable latch	KWPRI5AL	1 lbs
KW	YE23	US15	Radius Corner Full Lip	-	Privacy w/adjustable latch	KWPRI5AR	1 lbs
AL	YE71	US15	Radius Corner Full Lip	KW 5 Pin	Entry w/adjustable latch	ALE156	1.61 lbs
KW	YE71	US15	Radius Corner Full Lip	KW 5 Pin	Entry w/adjustable latch	KWE155DI	1.61 lbs
KW	YE71	US15	Radius Corner Full Lip	KW 5 Pin	Entry w/adjustable latch	KWE156	1.61 lbs
AL	YE73	US15	Radius Corner Full Lip	KW 5 Pin	Entry w/adjustable latch	ALE155A	1.13 lbs
KW	YE73	US15	Radius Corner Full Lip	KW 5 Pin	Entry w/adjustable latch	KW155AL	1.13 lbs
KW	YE73	US15	Radius Corner Full Lip	KW 5 Pin	Entry w/adjustable latch	KW155AR	1.13 lbs
AL	YE81	US15	-	-	Dummy	ALD15R	.48 lbs
KW	YE81	US15	-	-	Dummy, LH	KWD15L	.48 lbs
KW	YE81	US15	-	-	Dummy, RH	KWD15R	.48 lbs
-	YH82	US26D	Radius Corner Full Lip	KW 6 Pin	Deadbolt w/adjustable latch	D881713	1.25 lbs
-	YH82	US15	Radius Corner Full Lip	KW 6 Pin	Deadbolt w/adjustable latch	D881N13	1.25 lbs
-	NT860	US26D	Round Corner	-	Deadbolt, one-sided with plate, UL listed	4883701U	.6 lbs
-	NT880	US15	Radius Corner Full Lip	-	Deadbolt Oneway Radius Corner, 2-3/8" latch	4885N02	.4 lbs
-	NT880	US26D	Radius Corner Full Lip	-	Deadbolt Oneway, 2-3/8" latch, UL listed	4885702	.5 lbs

For complete product offering, please see the Yale Residential price book.

Fax 877-888-2772, email [flashship@assaabloy.com](mailto:flashship@assaabloy.com) or use  
Online Order Entry at [www.assaabloydss.com/extranet](http://www.assaabloydss.com/extranet) by clicking the FlashShip™ icon  
Note: FlashShip™ reserves the right to limit quantities.

Copyright © 2017-2020, ASSA ABLOY Door Security Solutions, an ASSA ABLOY Group company. All rights reserved.  
Reproduction in whole or in part without the express written permission of ASSA ABLOY Door Security Solutions is prohibited.

Part of ASSA ABLOY

# ARCHITECTURAL DOOR ACCESSORIES™

Markar | McKinney | Pemko | Rockwood

## MCKINNEY HINGES



**ASSA ABLOY**

Experience a safer  
and more open world

Fax 877-888-2772, email [flashship@assaabloy.com](mailto:flashship@assaabloy.com) or use  
Online Order Entry at [www.assaabloydss.com/extranet](http://www.assaabloydss.com/extranet) by clicking the FlashShip™ icon

*Note: FlashShip™ reserves the right to limit quantities.*

Copyright © 2017-2020, ASSA ABLOY Door Security Solutions, an ASSA ABLOY Group company. All rights reserved.  
Reproduction in whole or in part without the express written permission of ASSA ABLOY Door Security Solutions is prohibited.



1502 Spring Hinge



TA2714 Five Knuckle Hinge

Model #	Size (in.)	Options	Finish	FlashShip™ #	Approx. Wt. Each (Lbs)
<b>Spring Hinges - Standard Weight</b>					
1502	4-1/2" x 4-1/2"	—	US26D	085496	1
1502	4-1/2" x 4-1/2"	—	US3	086141	1
1502	4-1/2" x 4-1/2"	—	US10A	086142	1
1502	4-1/2" x 4-1/2"	—	US10B	086143	1
<b>3 Knuckle Hinges - Heavy Weight</b>					
TA786	4-1/2" x 4-1/2"	—	US26D	085521	2
<b>3 Knuckle Hinges - Standard Weight</b>					
TA714	4-1/2" x 4-1/2"	—	US26D	085520	1
<b>5 Knuckle Hinges - Standard Weight</b>					
TA2314	4-1/2" x 4-1/2"	—	US26D	085513	1
TA2314	4-1/2" x 4-1/2"	NRP	US26D	085514	1
TA2314	4-1/2" x 4-1/2"	—	US32D	085515	1
TA2314	4-1/2" x 4-1/2"	NRP	US32D	085516	1
T2714	4-1/2" x 4-1/2"	—	US26D	085498	1
T2714	4-1/2" x 4-1/2"	—	US10B	085497	1
T2714	4-1/2" x 4-1/2"	—	US10A	086240	1
TA2714	4-1/2" x 4-1/2"	—	USP	085499	1
TA2714	4-1/2" x 4-1/2"	—	US3	085500	1
TA2714	4-1/2" x 4-1/2"	—	US15	085502	1
TA2714	4-1/2" x 4-1/2"	—	US26	085503	1
TA2714	4-1/2" x 4-1/2"	—	US26D	085504	1
TA2714	4-1/2" x 4-1/2"	—	US10	085501	1
TA2714	4-1/2" x 4-1/2"	—	US10B	085506	1
TA2714	4-1/2" x 4-1/2"	—	US10A	086241	1
TA2714	4-1/2" x 4-1/2"	NRP	US26D	085505	1
TA2714	4-1/2" x 4-1/2"	NRP	US10B	085507	1
TA2714	4-1/2" x 4-1/2"	NRP	US10A	086242	1
TB2714	4-1/2" x 4-1/2"	—	US26D	085508	1
TA2714	5" x 4-1/2"	—	US26D	085509	1
<b>5 Knuckle Hinges - Heavy Weight</b>					
T4A3786	4-1/2" x 4-1/2"	—	US26D	085510	1.5
T4A3786	4-1/2" x 4-1/2"	NRP	US26D	085511	1.5
T4A3786	4-1/2" x 4-1/2"	—	USP	086086	1.5
T4A3786	4-1/2" x 4-1/2"	NRP	USP	086087	1.5
T4A3786	5" x 4-1/2"	—	US26D	085512	2
T4A3386	4-1/2" x 4-1/2"	—	US32D	085517	1.5
T4A3386	4-1/2" x 4-1/2"	NRP	US32D	085518	1.5
T4A3386	5" x 4-1/2"	NRP	US32D	085519	2

McKinney hinges on this page sold in quantities of 3

Fax 877-888-2772, email [flashship@assaabloy.com](mailto:flashship@assaabloy.com) or use  
Online Order Entry at [www.assaabloydss.com/extranet](http://www.assaabloydss.com/extranet) by clicking the FlashShip™ icon

Note: FlashShip™ reserves the right to limit quantities.

Copyright © 2017-2020, ASSA ABLOY Door Security Solutions, an ASSA ABLOY Group company. All rights reserved.  
Reproduction in whole or in part without the express written permission of ASSA ABLOY Door Security Solutions is prohibited.

**ASSA ABLOY**

Experience a safer  
and more open world



MPB79



MPB99

Model #	Size (in.)	Options	Finish	FlashShip™ #	Approx. Wt. Each (Lbs)
<b>MacPro® Hinges</b>					
MPB79	4-1/2" x 4-1/2"	—	US26D	085527	1
MPB79	4-1/2" x 4-1/2"	NRP	US26D	085528	1
MPB79	4-1/2" x 4-1/2"	—	USP	085529	1
MPB79	4-1/2" x 4-1/2"	—	10BE	086095	1
MPB79	4-1/2" x 4-1/2"	NRP	10BE	086096	1
MPB79	4-1/2" x 4-1/2"	NRP	USP	086130	1
MPB79	4-1/2" x 4-1/2"	—	US3	086131	1
MPB79	4-1/2" x 4-1/2"	—	US26	086132	1
MPB79	4-1/2" x 4-1/2"	—	US10B	086133	1
MPB79	4-1/2" x 4-1/2"	NRP	US10B	086134	1
MPB79	4-1/2" x 4-1/2"	NRP	US3	086085	1
MPB91	4-1/2" x 4-1/2"	—	US32D	085530	1
MPB91	4-1/2" x 4-1/2"	NRP	US32D	085531	1
MP79	4-1/2" x 4-1/2"	—	US26D	085532	1.5
MP79	4-1/2" x 4-1/2"	—	US10BE	086097	1.5
MP79	4-1/2" x 4-1/2"	—	USP	086135	1.5
MP79	4-1/2" x 4-1/2"	NRP	USP	086136	1.5
MP79	4-1/2" x 4-1/2"	—	US3	086137	1.5
MP79	4-1/2" x 4-1/2"	—	US26	086138	1.5
MP79	4-1/2" x 4-1/2"	NRP	US26D	086139	1.5
MP79	4-1/2" x 4-1/2"	—	US10B	086140	1.5
MPB68	4-1/2" x 4-1/2"	—	US26D	085533	1.5
MPB68	4-1/2" x 4-1/2"	NRP	US26D	085534	1.5
MPB99	4-1/2" x 4-1/2"	—	US32D	085535	1.5
MPB99	4-1/2" x 4-1/2"	NRP	US32D	085536	1.5
MPS60	4-1/2" x 4-1/2"	—	US26D	085537	1

McKinney hinges on this page sold in quantities of 3

**ASSA ABLOY**

Experience a safer  
and more open world

Fax 877-888-2772, email [flashship@assaabloy.com](mailto:flashship@assaabloy.com) or use  
Online Order Entry at [www.assaabloydss.com/extranet](http://www.assaabloydss.com/extranet) by clicking the FlashShip™ icon

*Note: FlashShip™ reserves the right to limit quantities.*

Copyright © 2017-2020, ASSA ABLOY Door Security Solutions, an ASSA ABLOY Group company. All rights reserved.  
Reproduction in whole or in part without the express written permission of ASSA ABLOY Door Security Solutions is prohibited.





ElectroLynx® Hinge



Hinge Pin Door Stop


Model #	Size (in.)	Options	Finish	FlashShip™ #	Approx. Wt. Each (Lbs)
<b>ElectroLynx® Hinges</b>					
TA2714	4-1/2" x 4-1/2"	QC4	US26D	085522	1
TA2714	4-1/2" x 4-1/2"	QC8	US26D	085524	1
TA2714	4-1/2" x 4-1/2"	QC12	US26D	085526	1
T4A3786	4-1/2" x 4-1/2"	QC4	US26D	085523	1.5
T4A3786	4-1/2" x 4-1/2"	QC8	US26D	085525	1.5
<b>ElectroLynx® Cables</b>					
QC-C003	3"	12 Wire 22AWG	—	085538	0.1
QC-C200	26"	12 Wire 22AWG	—	085539	0.1
QC-C206	32"	12 Wire 22AWG	—	085540	0.1
QC-C300	38"	12 Wire 22AWG	—	085541	0.1
QC-C306	44"	12 Wire 22AWG	—	085542	0.2
QC-C400	50"	12 Wire 22AWG	—	085543	0.2
QC-C1500	15'2"	12 Wire 22AWG	—	085544	0.7
QC-C1500P	15'2'	12 Wire 22AWG	—	085545	0.7
<b>Hinge Pin Door Stop</b>					
MK76305	4-1/2"	—	26D	086508	1
MK76306	4-1/2"	—	26D	086509	1

Fax 877-888-2772, email [flashship@assaabloy.com](mailto:flashship@assaabloy.com) or use  
 Online Order Entry at [www.assaabloydss.com/extranet](http://www.assaabloydss.com/extranet) by clicking the FlashShip™ icon  
 Note: FlashShip™ reserves the right to limit quantities.

Copyright © 2017-2020, ASSA ABLOY Door Security Solutions, an ASSA ABLOY Group company. All rights reserved.  
 Reproduction in whole or in part without the express written permission of ASSA ABLOY Door Security Solutions is prohibited.

**ASSA ABLOY**

Experience a safer  
and more open world



ARCHITECTURAL DOOR ACCESSORIES™

Markar | McKinney | Pemko | Rockwood

MARKAR/PEMKO PRODUCTS

**ASSA ABLOY**

Experience a safer  
and more open world

Fax 877-888-2772, email [flashship@assaabloy.com](mailto:flashship@assaabloy.com) or use  
Online Order Entry at [www.assaabloydss.com/extranet](http://www.assaabloydss.com/extranet) by clicking the FlashShip™ icon

*Note: FlashShip™ reserves the right to limit quantities.*

Copyright © 2017-2020, ASSA ABLOY Door Security Solutions, an ASSA ABLOY Group company. All rights reserved.  
Reproduction in whole or in part without the express written permission of ASSA ABLOY Door Security Solutions is prohibited.



Markar 300 Series Hinges

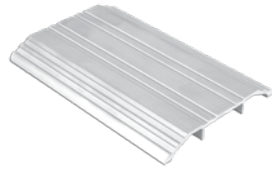
Model #	Description	FlashShip™ #	Approx. Wt. Each (Lbs)
<b>14 Gauge Stainless Steel Pin &amp; Barrel Continuous Hinges</b>			
FM300-83	Markar Edge Mount Pin & Barrel Hinge, Stainless Steel, 83-1/8" Long	085546	12.9
FM300-95	Markar Edge Mount Pin & Barrel Hinge, Stainless Steel, 95" Long	085547	14.8
FM300-79	Markar Edge Mount Pin & Barrel Hinge, Stainless Steel, 79-3/16" Long	085548	12.5
HG305-83	Markar Edge Mount Pin & Barrel Hinge Guard, Double Return, Stainless Steel, 83-1/8" Long	085549	13.5
HG305-95	Markar Edge Mount Pin & Barrel Hinge Guard, Double Return, Stainless Steel, 95" Long	085550	15.5
HG315-83	Markar Edge Mount Pin & Barrel Hinge Guard, Single Return, Stainless Steel, 83-1/8" Long	085551	13.3
HG315-95	Markar Edge Mount Pin & Barrel Hinge Guard, Single Return, Stainless Steel, 95" Long	085552	15.3
PDLAA26D	Privacy Door Latch, Satin Chrome	086612	1
PDLAABSP	Privacy Door Latch, Black Suede Powder Coat	086613	1

Fax 877-888-2772, email [flashship@assaabloy.com](mailto:flashship@assaabloy.com) or use  
 Online Order Entry at [www.assaabloydss.com/extranet](http://www.assaabloydss.com/extranet) by clicking the FlashShip™ icon  
 Note: FlashShip™ reserves the right to limit quantities.

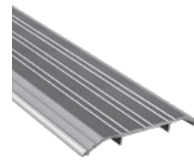
Copyright © 2017-2020, ASSA ABLOY Door Security Solutions, an ASSA ABLOY Group company. All rights reserved.  
 Reproduction in whole or in part without the express written permission of ASSA ABLOY Door Security Solutions is prohibited.

**ASSA ABLOY**

Experience a safer  
and more open world



170A Threshold



171A Threshold

Model #	Description	FlashShip™ #	Approx. Wt. Each (Lbs)
<b>Thresholds</b>			
151A36	3" Flat Saddle Threshold, 1/4" High, 36" Long	085553	1.4
154A36	5" Flat Saddle Threshold, 1/4" High, 36" Long	085554	2.8
170A36	4" Fluted Saddle Threshold, 1/2" High, 36" Long	085555	2.1
170A72	4" Fluted Saddle Threshold, 1/2" High, 72" Long	085558	4.1
170D36	4" Fluted Saddle Threshold, 1/2" High, 36" Long, Dark Bronze	085559	2.1
170A48	4" Fluted Saddle Threshold, 1/2" High, 48" Long	085557	2.8
170A36WS/PA	4" Fluted Saddle Threshold, 1/2" High, 36" Long with Wood Screws and Plastic Anchors	085556	2.1
171A36	5" Fluted Saddle Threshold, 1/2" High, 36" Long	085561	2.7
171A36WS/PA	5" Fluted Saddle Threshold, 1/2" High, 36" Long, With Wood Screws and Plastic Anchors	085562	2.7
171A48	5" Fluted Saddle Threshold, 1/2" High, 48" Long	085563	3.6
171A72	5" Fluted Saddle Threshold, 1/2" High, 72" Long	085564	5.4
171D36	5" Fluted Saddle Threshold, 1/2" High, 36" Long, Dark Bronze	085565	2.7
1715A36	5" Heavy Duty Saddle Threshold, 1/2" High, 36" Long	085560	5.2
172A36	6" Fluted Saddle Threshold, 1/2" High, 36" Long	085566	3.1
172A48	6" Fluted Saddle Threshold, 1/2" High, 48" Long	085567	4.1
172A72	6" Fluted Saddle Threshold, 1/2" High, 72" Long	085568	5.5
172D36	6" Fluted Saddle Threshold, 1/2" High, 36" Long, Dark Bronze	085569	3.1
2548A36	8" Fluted Saddle Threshold, 1/2" High, 36" Long	085601	4
2548A72	8" Fluted Saddle Threshold, 1/2" High, 72" Long	085602	8
270A36	4" Fluted Saddle Threshold, 1/4" High, 36" Long	085603	2
270A72	4" Fluted Saddle Threshold, 1/4" High, 72" Long	085604	3.9
271A36	5" Fluted Saddle Threshold, 1/4" High, 36" Long	085606	2.5
271A48	5" Fluted Saddle Threshold, 1/4" High, 48" Long	085608	3.3
271A72	5" Fluted Saddle Threshold, 1/4" High, 72" Long	085609	5
271D36	5" Fluted Saddle Threshold, 1/4" High, 36" Long, Dark Bronze	085610	2.5
272A36	6" Fluted Saddle Threshold, 1/4" High, 36" Long	085611	3
272A48	6" Fluted Saddle Threshold, 1/4" High, 48" Long	085613	4
272A72	6" Fluted Saddle Threshold, 1/4" High, 72" Long	085614	6.1
272D36	6" Fluted Saddle Threshold, 1/4" High, 36" Long, Dark Bronze	085615	3
2748A36	8" Fluted Saddle Threshold, 1/4" High, 36" Long	085616	3.9
2748A72	8" Fluted Saddle Threshold, 1/4" High, 72" Long	085617	7.8
2005AT36	5" Latching Panic Threshold, 1/2" High, 36" Long with TPE Seal	085584	2.5
2005AT48	5" Latching Panic Threshold, 1/2" High, 48" Long with TPE Seal	085585	3.3
2005AT72	5" Latching Panic Threshold, 1/2" High, 72" Long with TPE Seal	085586	5

**ASSA ABLOY**

Experience a safer  
and more open world

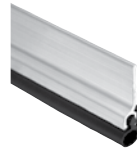
Fax 877-888-2772, email [flashship@assaabloy.com](mailto:flashship@assaabloy.com) or use  
Online Order Entry at [www.assaabloydss.com/extranet](http://www.assaabloydss.com/extranet) by clicking the FlashShip™ icon

Note: FlashShip™ reserves the right to limit quantities.

Copyright © 2017-2020, ASSA ABLOY Door Security Solutions, an ASSA ABLOY Group company. All rights reserved.  
Reproduction in whole or in part without the express written permission of ASSA ABLOY Door Security Solutions is prohibited.



210AV Door Shoe



303AS Jamb Set

Model #	Description	FlashShip™ #	Approx. Wt. Each (Lbs)
<b>Thresholds (Cont.)</b>			
2008APK36	4" Acoustic Threshold, 1/2" High, 36" Long with Encased Foam Seal	085587	1.7
252X3AFG36	5-1/8" Thermal Barrier Saddle Threshold, 1/2" High, 36" Long	085600	3.3
EV232BL36	Eco-V Hospitality Threshold, Carpet to Carpet, Black, 36in	086374	1
EV2325BL36	Eco-V Hospitality Threshold, Carpet to Tile, Black, 36in	086375	1
<b>Door Shoes</b>			
210AV36	Aluminum L Shape Door Shoe, Drip Ledge, Vinyl Bottom Seal, 36"	085588	1
210DV36	Dark, Aluminum L Shape Door Shoe, Drip Ledge, Vinyl Bottom Seal, 36"	085589	1
210DV48	Dark, Aluminum L Shape Door Shoe, Drip Ledge, Vinyl Bottom Seal, 48"	085590	1.2
216AV36	Aluminum U Shape Door Shoe, Drip Ledge, Vinyl Bottom Seal, 1-3/4" Door, 36"	085591	1.2
216DV36	Dark, Aluminum U Shape Door Shoe, Drip Ledge, Vinyl Bottom Seal, 1-3/4" Door, 36"	085592	1.2
216PWW36	Painted White, Aluminum U Shape Door Shoe, Drip Ledge, Vinyl Bottom Seal, 1-3/4" Door, 36"	085593	1.2
2173AV36	Aluminum U Shape Door Shoe, Notched Vinyl Bottom Seal, 1-3/4" Door, 36"	085595	1
2173DV36	Dark, Aluminum U Shape Door Shoe, Notched Vinyl Bottom Seal, 1-3/4" Door, 36"	085596	1
221AV36	Aluminum U Shape 3" Door Shoe/Kickplate, Vinyl Bottom Seal, 1-3/4" Door, 36"	085597	3.1
2343AV36	Aluminum Door Shoe, Notched Vinyl Bottom Seal, 1-3/16" Wide, 36"	085598	1
<b>Jamb Sets</b>			
303AS3684	Silicone Perimeter Door Seal Kit, Aluminum Channel, 36" x 84" Opening	085629	1.2
303AS7284	Silicone Perimeter Door Seal Kit, Aluminum Channel, 72" x 84" Opening	085630	1.4
303DS3684	Silicone Perimeter Door Seal Kit, Dark Bronze Aluminum Channel, 36" x 84" Opening	085634	1.2
303AV3684	Vinyl Perimeter Door Seal Kit, Aluminum Channel, 36" x 84" Opening	085631	1.2
303AV3684TK	Vinyl Perimeter Door Seal Kit w/Tek Screws, Aluminum Channel, 36" x 84" Opening	085632	1.2
303DV3684	Vinyl Perimeter Door Seal Kit, Dark Bronze Aluminum Channel, 36" x 84" Opening	085635	1.2
303AV7284	Vinyl Perimeter Door Seal Kit, Aluminum Channel, 72" x 84" Opening	085633	1.4
305CR3684	Perimeter Gasketing, Clear Aluminum Black Sponge EPDM Insert, 36" x 84" Opening	085638	1.2
305CN84	Split Astragal/Meeting Stile Seal, Clear Aluminum, Gray EPDM Insert, 84"	085636	0.5
305CN96	Split Astragal/Meeting Stile Seal, Clear Aluminum, Gray EPDM Insert, 96"	085637	0.6
319CN3684	Perimeter Gasketing, Clear Anodized Aluminum with Black EPDM insert, 36" x 84" Opening	085645	1.8
332CR3684	Perimeter Gasketing, Clear Anodized Aluminum with Black Sponge EPDM insert, 36" x 84" Opening	085646	1.4
<b>Brush Door Sweeps/Seal</b>			
18061CNB36	Brush Door Sweep, 3/4" Clear Aluminum Channel, 5/8" Brush, 36" Long	085571	0.4
18061CNB48	Brush Door Sweep, 3/4" Clear Aluminum Channel, 5/8" Brush, 48" Long	085572	0.5
18061CNB84	Door Seal, 3/4" Clear Aluminum Channel, 5/8" Brush, 84" Long	085573	0.9
18061CNB96	Door Seal, 3/4" Clear Aluminum Channel, 5/8" Brush, 96" Long	085574	1.2
18061DNB36	Brush Door Sweep, 3/4" Dark Bronze Aluminum Channel, 5/8" Brush, 36" Long	085575	0.4

Fax 877-888-2772, email [flashship@assaabloy.com](mailto:flashship@assaabloy.com) or use Online Order Entry at [www.assaabloydss.com/extranet](http://www.assaabloydss.com/extranet) by clicking the FlashShip™ icon  
 Note: FlashShip™ reserves the right to limit quantities.

Copyright © 2017-2020, ASSA ABLOY Door Security Solutions, an ASSA ABLOY Group company. All rights reserved. Reproduction in whole or in part without the express written permission of ASSA ABLOY Door Security Solutions is prohibited.

**ASSA ABLOY**

Experience a safer and more open world

## Door Sweeps & Astragals



18061DNB Brush Door Sweep



345DV Door Bottom Sweep

Model #	Description	FlashShip™ #	Approx. Wt. Each (Lbs)
<b>Brush Door Sweeps/Seal (Cont.)</b>			
18061DNB84	Door Seal, 3/4" Dark Bronze Aluminum Channel, 5/8" Brush, 84" Long	085576	0.9
18062CNB36	Brush Door Sweep, 7/8" Clear Aluminum Channel, 5/8" Brush, 36" Long	085577	0.6
18062CNB48	Brush Door Sweep, 7/8" Clear Aluminum Channel, 5/8" Brush, 48" Long	085578	0.5
18062CNB84	Door Seal, 7/8" Clear Aluminum Channel, 5/8" Brush, 84" Long	085579	0.9
18062DNB36	Brush Door Sweep, 7/8" Dark Bronze Aluminum Channel, 5/8" Brush, 36" Long	085580	0.5
18100CNB36	Brush Door Sweep, 7/8" Clear Aluminum Channel, 1" Brush, 36" Long	085581	0.5
18100CNB48	Brush Door Sweep, 7/8" Clear Aluminum Channel, 1" Brush, 48" Long	085582	0.7
18137CNB36	Brush Door Sweep, 7/8" Clear Aluminum Channel, 1-3/8" Brush, 36" Long	085583	0.5
29324CNB84	Snap Cover W/S, Clear Anodized Aluminum, Gray Nylon Brush, 84"	085625	1.5
29326CNB36	Snap Cover Weatherstrip, Clear Anodized Aluminum, 1/4" x 7/8", with 5/8" Gray Nylon Brush, 36"	085626	0.8
315CN36	Neoprene Door Sweep, 1-1/4" Clear Aluminum Channel, 7/16" Neoprene, 36" Long	085639	0.4
315CN36TK	Neoprene Door Sweep w/Tek Screws, 1-1/4" Clear Aluminum Channel, 7/16" Neoprene, 36" Long	085640	0.4
315CN42	Neoprene Door Sweep, 1-1/4" Clear Aluminum Channel, 7/16" Neoprene, 42" Long	085641	0.5
315CN48	Neoprene Door Sweep, 1-1/4" Clear Aluminum Channel, 7/16" Neoprene, 48" Long	085642	1
315DN36	Neoprene Door Sweep, 1-1/4" Dark Bronze Aluminum Channel, 7/16" Neoprene, 36" Long	085643	0.4
315DN48	Neoprene Door Sweep, 1-1/4" Dark Bronze Aluminum Channel, 7/16" Neoprene, 48" Long	085644	1
307AV36	Door Bottom Sweep, 7/8" Gray Aluminum Channel, 1" Vinyl, 36" Long	086120	—
307AV48	Door Bottom Sweep, 7/8" Gray Aluminum Channel, 1" Vinyl, 36" Long	086121	—
345AV36	Door Bottom Sweep w/Rain Drip, Mill Finish Aluminum, Gray Vinyl Insert, 36" Long	085652	0.5
345AV48	Door Bottom Sweep w/Rain Drip, Mill Finish Aluminum, Gray Vinyl Insert, 48" Long	085653	0.6
345DV36	Door Bottom Sweep w/Rain Drip, Dark Bronze Aluminum, Gray Vinyl Insert, 36" Long	085655	0.5
345ANB36	Door Bottom Sweep w/Rain Drip, Mill Finish Aluminum, Nylon Brush Insert, 36" Long	085650	0.5
345A36	Door Bottom Rain Drip, Mill Finish Aluminum, 36" Long	085649	0.5
345D36	Door Bottom Rain Drip, Dark Bronze Aluminum, 36" Long	085654	0.5
345ANB48	Door Bottom Sweep with Rain Drip, Mill Finish Aluminum, Nylon Brush Insert, 48" Long	085651	0.6
3452CNB36	Door Bottom Sweep with Rain Drip, Clear Aluminum, Nylon Brush Insert, 36" Long	085648	0.5
3452AV36	Door Bottom Sweep with Rain Drip, Mill Finish Aluminum, Vinyl Insert, 36" Long	085647	0.5
<b>Overlapping Astragals</b>			
357SP84	Overlapping Astragals, 1/8" Thick, 2" Wide, Galvanized Steel (11 ga), 84" Long	085661	5.9
357C84	Overlapping Astragals, 1/8" Thick, 2" Wide, Clear Anodized Aluminum, 84" Long	085659	2.1
357SP96	Overlapping Astragals, 1/8" Thick, 2" Wide, Galvanized Steel (11 ga), 96" Long	085662	6.8
357SS84	Overlapping Astragals, 1/8" Thick, 2" Wide, Stainless Steel (11 ga), 84" Long	085663	9
357C96	Overlapping Astragals, 1/8" Thick, 2" Wide, Clear Anodized Aluminum, 96" Long	085660	2.4

**ASSA ABLOY**

Experience a safer  
and more open world

Fax 877-888-2772, email [flashship@assaabloy.com](mailto:flashship@assaabloy.com) or use  
Online Order Entry at [www.assaabloydss.com/extranet](http://www.assaabloydss.com/extranet) by clicking the FlashShip™ icon

Note: FlashShip™ reserves the right to limit quantities.

Copyright © 2017-2020, ASSA ABLOY Door Security Solutions, an ASSA ABLOY Group company. All rights reserved.  
Reproduction in whole or in part without the express written permission of ASSA ABLOY Door Security Solutions is prohibited.





346C Rain Drip



411APKL Automatic Door Bottom

Model #	Description	FlashShip™ #	Approx. Wt. Each (Lbs)
<b>Meeting Stile Split Astragal</b>			
18041CNB84	Brush Meeting Stile Gasketing, 3/4" Clear Aluminum Channel, 3/8" Exposed Brush, 1 piece @84"	085570	0.9
18061CNB84	Brush Door Sweep, 3/4" Clear Aluminum Channel, 5/8" Brush, 84" Long	085573	0.9
18061CNB96	Brush Door Sweep, 3/4" Clear Aluminum Channel, 5/8" Brush, 96" Long	085574	1.2
18061DNB84	Brush Door Sweep, 3/4" Dark Bronze Aluminum Channel, 5/8" Brush, 84" Long	085576	0.9
18062CNB84	Brush Door Sweep, 7/8" Clear Aluminum Channel, 5/8" Brush, 84" Long	085579	0.9
29310CS84	Straight Snap-Cover Meeting Stile, Clear Anodized Aluminum, Silicone Seal, 1 piece @84"	085623	1.5
29324CNB84	Snap Cover W/S, Clear Anodized Aluminum, 1/4" x 7/8", with 3/8" Gray Nylon Brush, 1 piece @84"	085625	1.5
369AP84	Meeting Stile Mill Aluminum Pile Insert, 84"	085664	0.3
355CS84	T-Astragal, 84"	086144	0.9
<b>Rain Drip</b>			
346C40	Door Top Rain Drip, 2-1/2" Clear Aluminum Projection, 40" Long	085656	1.2
346C52	Door Top Rain Drip, 2-1/2" Clear Aluminum Projection, 52" Long	085657	1.5
346C76	Door Top Rain Drip, 2-1/2" Clear Aluminum Projection, 76" Long	085658	2.2
<b>Automatic Door Bottoms</b>			
411APKL36	Full Mortised Auto Door Bottom, 1-3/8" x 9/16" Aluminum Channel, PemkoPrene™ Insert, Low Closing Force	085667	1.5
411ARL32	Full Mortised Auto Door Bottom, Mill Finish Aluminum with Black Sponge EPDM Insert, 32" Long	085668	1.3
411ARL36	Full Mortised Auto Door Bottom, 1-3/8" x 9/16" Aluminum Channel, Sponge EPDM Insert, Low Closing Force	085669	1.5
411ANBL36	Full Mortised Auto Door Bottom, Mill Finish Aluminum w/ Black Nylon Brush Insert, 36" Long	085666	1.5
434APKL36	Full Mortised Auto Door Bottom, 1-5/16" x 27/32" Aluminum Channel, PemkoPrene™ Insert	085673	1.6
434ARL36	Full Mortised Auto Door Bottom, Mill Finish Aluminum with Black Sponge EPDM Insert, 36" Long	085674	2.5
4131CRL36	Surface and Semi Mortised Auto Door Bottom, Clear Aluminum, Black Sponge EPDM Insert, 36" Long	085671	1.5
4131CPKL36	Surface and Semi Mortised Auto Door Bottom, Clear Aluminum, Black PemkoPrene™ Insert, 36" Long	085670	1.5
4131DRL36	Surface and Semi Mortised Auto Door Bottom, Dark Bronze Aluminum, Black Sponge EPDM Insert, 36" Long	085672	1.5
STC411APK36	Acoustic Automatic Door Bottom, Clear Aluminum 36" Long	086485	1.5
STC411APK42	Acoustic Automatic Door Bottom, Clear Aluminum 42" Long	086486	1.5
STC411APK48	Acoustic Automatic Door Bottom, Clear Aluminum, 48" Long	086487	1.5
STC4131CPK36	Acoustic Automatic Door bottom, Clear Aluminum, 36" Long	086488	1.5
STC4131DPK36	Acoustic Automatic Door Bottom, Dark Bronze Aluminum, 36" Long	086489	1.5
<b>Aluminum Geared Continuous Hinges</b>			
CFM83HD1	Continuous Geared Hinge, Full Mortise, Clear Aluminum, Heavy Duty 83"	085677	6.3
CFM83SLF-HD1	Continuous Geared Hinge, Full Mortise, Short Leaf Flush, Clear Aluminum, Heavy Duty 83"	085678	6

Fax 877-888-2772, email [flashship@assaabloy.com](mailto:flashship@assaabloy.com) or use Online Order Entry at [www.assaabloydss.com/extranet](http://www.assaabloydss.com/extranet) by clicking the FlashShip™ icon

Note: FlashShip™ reserves the right to limit quantities.

Copyright © 2017-2020, ASSA ABLOY Door Security Solutions, an ASSA ABLOY Group company. All rights reserved. Reproduction in whole or in part without the express written permission of ASSA ABLOY Door Security Solutions is prohibited.

**ASSA ABLOY**

Experience a safer and more open world



CFM Continuous Geared Hinges



CFS-CP Continuous Geared Hinges

Model #	Description	FlashShip™ #	Approx. Wt. Each (Lbs)
<b>Aluminum Geared Continuous Hinges (Cont.)</b>			
CFM83SLI-HD1	Continuous Geared Hinge, Full Mortise, Short Leaf Inset, Clear Aluminum, Heavy Duty 83"	085679	5.5
CFM95HD1	Continuous Geared Hinge, Full Mortise, Clear Aluminum, Heavy Duty 95"	085680	7.2
CFM95SLF-HD1	Continuous Geared Hinge, Full Mortise, Short Leaf Flush, Clear Aluminum, Heavy Duty 95"	085681	7.2
CFS83	Continuous Geared Hinge, Full Surface, Clear Aluminum, Standard Duty, 83"	085682	7.4
CFS83CP	Continuous Geared Hinge, Full Surface, Center Pivot, Clear Aluminum, Standard Duty, 83"	085683	7.5
CFS83HD1	Continuous Geared Hinge, Full Surface, Clear Aluminum, Heavy Duty 83"	085685	7.4
CFS83CP-HD1	Continuous Geared Hinge, Full Surface, Center Pivot, Clear Aluminum, Heavy Duty 83"	085684	7.7
DFM83HD1	Continuous Geared Hinge, Full Mortise, Dark Bronze Aluminum, Heavy Duty 83"	085686	6.3
DFS83	Continuous Geared Hinge, Full Surface, Dark Bronze Aluminum, Standard Duty, 83"	085687	7.4
<b>Adhesive Gasket</b>			
HSS2000-18	HSS Adhesive Intumescent Gasket, 3/64" x 7/16", 18' Roll	085688	0.2
HSS2000-21	HSS Adhesive Intumescent Gasket, 3/64" x 7/16", 21' Roll	085689	0.4
HSS2000-24	HSS Adhesive Intumescent Gasket, 3/64" x 7/16", 24' Roll	085690	0.4
HSS2000xS88D3684	Combination HSS Adhesive Intumescent Gasket and S88 Silicone Gasketing, Dark Brown, 36" x 84" Opening	085692	0.7
HSS2000xS88D4884	Combination HSS Adhesive Intumescent Gasket and S88 Silicone Gasketing, Dark Brown, 48" x 84" Opening	085693	0.8
HSS2000xS44D4884	Combination HSS Adhesive Intumescent Gasket and S44 Silicone Gasketing, Dark Brown, 48" x 84" Opening	085691	0.5
PK33BL17	PemkoPrene™ Adhesive Perimeter Gasket, 3/16" x 3/8", Black, 17' Roll	085700	0.2
PK33D17	PemkoPrene™ Adhesive Perimeter Gasket, 3/16" x 3/8", Dark Brown, 17' Roll	085702	0.2
PK33BL20	PemkoPrene™ Adhesive Perimeter Gasket, 3/16" x 3/8", Black, 20' Roll	085701	0.2
PK55D17	PemkoPrene™ Adhesive Gasket, 3/16" x 1/2", Dark, 17' Roll	085705	0.3
PK55D20	PemkoPrene™ Adhesive Gasket, 3/16" x 1/2", Dark, 20' Roll	085706	0.3
PK55BL17	PemkoPrene™ Adhesive Gasket, 3/16" x 1/2", Black, 17' Roll	085703	0.3
PK55BL20	PemkoPrene™ Adhesive Gasket, 3/16" x 1/2", Black, 20' Roll	085704	0.3
S44D17	Silicone Fin Smoke Gasket, 5/16" x 7/16", Dark 17' Roll with Self Adhesive	085713	0.5
S44D20	Silicone Fin Smoke Gasket, 5/16" x 7/16", Dark 20' Roll with Self Adhesive	085714	0.6
S44D21	Silicone Fin Smoke Gasket, 5/16" x 7/16", Dark 21' Roll with Self Adhesive	085715	0.6
S44D25	Silicone Fin Smoke Gasket, 5/16" x 7/16", Dark 25' Roll with Self Adhesive	085716	0.8
S44W17	Silicone Fin Smoke Gasket, 5/16" x 7/16", White 17' Roll with Self Adhesive	085717	0.5
S88BL17	Silicone Bulb Smoke Gasket, 1/4" x 1/2", Black, 17' Roll with Self Adhesive	085729	0.5
S88BL20	Silicone Bulb Smoke Gasket, 1/4" x 1/2", Black, 20' Roll with Self Adhesive	085730	0.6
S88BL510	Silicone Bulb Smoke Gasket, 1/4" x 1/2", Black, 510' Roll with Self Adhesive	085731	13.6

**ASSA ABLOY**

Experience a safer  
and more open world

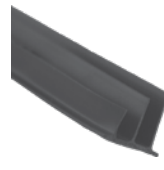
Fax 877-888-2772, email [flashship@assaabloy.com](mailto:flashship@assaabloy.com) or use  
Online Order Entry at [www.assaabloydss.com/extranet](http://www.assaabloydss.com/extranet) by clicking the FlashShip™ icon

*Note: FlashShip™ reserves the right to limit quantities.*

Copyright © 2017-2020, ASSA ABLOY Door Security Solutions, an ASSA ABLOY Group company. All rights reserved.  
Reproduction in whole or in part without the express written permission of ASSA ABLOY Door Security Solutions is prohibited.



S44D Adhesive Gasket



S773D Adhesive Gasket

Model #	Description	FlashShip™ #	Approx. Wt. Each (Lbs)
<b>Adhesive Gasket (Cont.)</b>			
S88D17	Silicone Bulb Smoke Gasket, 1/4" x 1/2", Dark, 17' Roll with Self Adhesive	085732	0.5
S88D18	Silicone Bulb Smoke Gasket, 1/4" x 1/2", Dark, 18' Roll with Self Adhesive	085733	0.6
S88D20	Silicone Bulb Smoke Gasket, 1/4" x 1/2", Dark, 20' Roll with Self Adhesive	085734	0.6
S88D21	Silicone Bulb Smoke Gasket, 1/4" x 1/2", Dark, 21' Roll with Self Adhesive	085736	0.7
S88D25	Silicone Bulb Smoke Gasket, 1/4" x 1/2", Dark, 25' Roll with Self Adhesive	085737	0.7
S88D204	Silicone Bulb Smoke Gasket, 1/4" x 1/2", Dark, 204' Roll with Self Adhesive	085735	0.6
S88D510	Silicone Bulb Smoke Gasket, 1/4" x 1/2", Dark, 510' Roll with Self Adhesive	085738	13.6
S88W17	Silicone Bulb Smoke Gasket, 1/4" x 1/2", White, 17' Roll with Self Adhesive	085739	0.5
S88W20	Silicone Bulb Smoke Gasket, 1/4" x 1/2", White 20' Roll with Self Adhesive	085740	0.6
S771D7	Silicone Astragal/Meeting Stile Gasket, 9/32" x 7/16", Dark, 7' Roll with Self Adhesive	085719	0.1
S771C7	Silicone Astragal/Meeting Stile Gasket, 9/32" x 7/16", Clear, 7' Roll with Self Adhesive	085718	0.1
S772D7	Silicone Astragal/Meeting Stile Gasket, 3/16" x 1/2", Dark, 7' Roll with Self Adhesive	085720	0.1
S772D8	Silicone Astragal/Meeting Stile Gasket, 3/16" x 1/2", Dark, 8' Roll with Self Adhesive	085721	0.1
S773D17	Silicone Triple Fin Acoustic/Smoke Gasket, 3/8" x 1/2", Dark 17' Roll with Self Adhesive	085724	0.4
S773D18	Silicone Triple Fin Acoustic/Smoke Gasket, 3/8" x 1/2", Dark 18' Roll with Self Adhesive	085725	0.4
S773D20	Silicone Triple Fin Acoustic/Smoke Gasket, 3/8" x 1/2", Dark 20' Roll with Self Adhesive	085726	0.5
S773D21	Silicone Triple Fin Acoustic/Smoke Gasket, 3/8" x 1/2", Dark 21' Roll with Self Adhesive	085727	0.5
S773BL17	Silicone Triple Fin Acoustic/Smoke Gasket, 3/8" x 1/2", Black 17' Roll with Self Adhesive	085722	0.4
S773BL20	Silicone Triple Fin Acoustic/Smoke Gasket, 3/8" x 1/2", Black 20' Roll with Self Adhesive	085723	0.5
S773W17	Silicone Triple Fin Acoustic/Smoke Gasket, 3/8" x 1/2", White 17' Roll with Self Adhesive	085728	0.4
<b>Perimeter Gasket</b>			
369AP84	Meeting Stile Mill Aluminum Pile Insert, 84"	085664	0.3
379CR84	Adjustable Jamb W/S Clear Anodized Aluminum Sponge EPDM Seal, 84"	085665	2.2
45041CNB3684	Door Sweep, 45-Degree Retainer with 13/32" Nylon Brush Clear Anodized , 3/0 x 7/0 Opening	085675	4.3
2891AS36	1/4" x 1-1/2" x 36" Perimeter Gasket, Heavy duty, Mill Aluminum w/Silicone Insert	085619	1.2
2891AS3684	1/4" x 1-1/2" Perimeter Gasket, Heavy Duty, Mill Aluminum, Silicon Insert for 3/0 x 7/0 Opening	085620	7
2891APK3684	1/4" x 1-1/2" Perimeter Gasket, Heavy Duty, Mill Aluminum PemkoPrene™ Seal for 3/0 x 7/0 Opening	085618	7
290APK84	1/4" x 1-1/2" x 84", Jamb Weatherstrip, Mill Aluminum w/PemkoPrene™ seal	085621	1.5
29310CS84	Straight Snap-Cover Meeting Stile, Clear Anodized Aluminum, Silicone Seal, 1 piece @84"	085623	1.5

Fax 877-888-2772, email [flashship@assaabloy.com](mailto:flashship@assaabloy.com) or use  
Online Order Entry at [www.assaabloydss.com/extranet](http://www.assaabloydss.com/extranet) by clicking the FlashShip™ icon

Note: FlashShip™ reserves the right to limit quantities.

Copyright © 2017-2020, ASSA ABLOY Door Security Solutions, an ASSA ABLOY Group company. All rights reserved.  
Reproduction in whole or in part without the express written permission of ASSA ABLOY Door Security Solutions is prohibited.

**ASSA ABLOY**

Experience a safer  
and more open world



MAG349D Adhesive Gasketing



RR1.25FMR Rubber Ramp

Model #	Description	FlashShip™ #	Approx. Wt. Each (Lbs)
<b>Perimeter Gasket</b>			
29324CNB36	Snap Cover Weatherstrip, Clear Anodized Aluminum, 1/4" x 7/8", with 3/8" Gray Nylon Brush, 36"	085624	0.7
29324CNB84	Snap Cover Meeting Stile, Clear Anodized Aluminum, 1/4" x 7/8", with 3/8" Gray Nylon Brush, 1 piece @84"	085625	1.5
29326CNB36	Snap Cover Weatherstrip, Clear Anodized Aluminum, 1/4" x 7/8", with 5/8" Gray Nylon Brush, 36"	085626	0.8
29326DNB36	Snap Cover Weatherstrip, Dark Bronze Anodized Aluminum, 1/4" x 7/8", with 5/8" Black Nylon Brush, 36"	085627	0.8
297AS3684	Jamb Weatherstrip Mill Aluminum w/Silicone Insert 1/4" x 13/16" for 3/0 x 7/0 Opening	085628	1.2
MAG349D-85	Magnetic Kerf-In Weatherstrip, Dark, Foam with Magnetic Insert, 85" Long	085694	0.6
Q102D-97	5/8" Reach, Encased Foam Kerf-In Weatherstrip, Dark, 97" Long	085709	0.3
Q103D-97	3/8" Reach, Encased Foam Kerf-In Weatherstrip, Dark, 97" Long	085710	0.2
Q106D-97	5/8" Reach, Encased Foam Kerf-In Weatherstrip, Dark, 97" Long	085711	0.3

**ASSA ABLOY**

Experience a safer  
and more open world

Fax 877-888-2772, email [flashship@assaabloy.com](mailto:flashship@assaabloy.com) or use  
Online Order Entry at [www.assaabloydss.com/extranet](http://www.assaabloydss.com/extranet) by clicking the FlashShip™ icon

*Note: FlashShip™ reserves the right to limit quantities.*

Copyright © 2017-2020, ASSA ABLOY Door Security Solutions, an ASSA ABLOY Group company. All rights reserved.  
Reproduction in whole or in part without the express written permission of ASSA ABLOY Door Security Solutions is prohibited.

ARCHITECTURAL DOOR ACCESSORIES™

Markar | McKinney | Pemko | Rockwood

ROCKWOOD PRODUCTS



Fax 877-888-2772, email [flashship@assaabloy.com](mailto:flashship@assaabloy.com) or use  
Online Order Entry at [www.assaabloydss.com/extranet](http://www.assaabloydss.com/extranet) by clicking the FlashShip™ icon  
*Note: FlashShip™ reserves the right to limit quantities.*

Copyright © 2017-2020, ASSA ABLOY Door Security Solutions, an ASSA ABLOY Group company. All rights reserved.  
Reproduction in whole or in part without the express written permission of ASSA ABLOY Door Security Solutions is prohibited.

Fax FlashShip orders to 877-888-2772 or email to [flashship@assaabloy.com](mailto:flashship@assaabloy.com)

**ASSA ABLOY**

Experience a safer  
and more open world



94C Flush Pull



106 x 70C Pull Plate



70C-RKW Push Plate

Model #	Description	Finish	FlashShip™ #	Approx. Wt. Each (Lbs)
<b>Push Plates</b>				
70B	3-1/2" x 15"	US10B	085885	1
70B	3-1/2" x 15"	US28	085886	1
70B	3-1/2" x 15"	US32D	085887	1
70C	4" x 16"	US3	085891	1
70C	4" x 16"	US10B	085888	1
70C	4" x 16"	US26D	085889	1
70C	4" x 16"	US28	085890	1
70C	4" x 16"	US32D	085892	1
70E	6" x 16"	US32D	085893	2
70F	8" x 16"	US32D	085894	2
<b>Flush Pulls</b>				
94	3-1/2" x 5"	US32D	085906	0.6
94BTB	Set BTB	US32D	085907	0.1
94C	3-1/2" x 5"	US32D	085908	0.6
95A	2-3/16" x 3-1/4"	US26D	085909	0.6
95B	2-11/16" x 4-3/16"	US26	085910	0.8
95B	2-11/16" x 4-3/16"	US26D	085911	0.8
<b>Pull Plates</b>				
102 x 70B	5/8" D x 5-1/2" CTC	US32D	085743	2
102 x 70C	5/8" D x 5-1/2" CTC	US32D	085744	2
105 x 70B	3/4" D x 5-1/2" CTC	US32D	085745	2
105 x 70C	3/4" D x 5-1/2" CTC	US32D	085746	2
106 x 70B	3/4" D x 6" CTC	US32D	085748	2
106 x 70C	3/4" D x 6" CTC	US10B	085749	2
106 x 70C	3/4" D x 6" CTC	US32D	085750	2
107 x 70B	3/4" D x 8" CTC	US32D	085752	2
107 x 70C	3/4" D x 8" CTC	US10B	085753	2
107 x 70C	3/4" D x 8" CTC	US32D	085754	2
110 x 70C	1" D x 8" CTC	US32D	085763	3.5
111 x 70C	1" D x 10" CTC	US32D	085765	4
122 x 70C	3/8" x 1-1/4" x 6" CTC	US10B	085766	2
122 x 70C	3/8" x 1-1/4" x 6" CTC	US32D	085767	2
125 x 70C	1" HR x 6" CTC	US32D	085768	2
126 x 70C	1" HR x 8" CTC	US32D	085769	2

**ASSA ABLOY**

Experience a safer  
and more open world

Fax 877-888-2772, email [flashship@assaabloy.com](mailto:flashship@assaabloy.com) or use  
Online Order Entry at [www.assaabloydss.com/extranet](http://www.assaabloydss.com/extranet) by clicking the FlashShip™ icon

*Note: FlashShip™ reserves the right to limit quantities.*

Copyright © 2017-2020, ASSA ABLOY Door Security Solutions, an ASSA ABLOY Group company. All rights reserved.  
Reproduction in whole or in part without the express written permission of ASSA ABLOY Door Security Solutions is prohibited.



AP1007 Notched Arm Pull with Plate



Offset Push Pull Set



320-RKW Latch Protector



RM4800 AccenTek Door Pull

Model #	Description	Finish	FlashShip™ #	Approx. Wt. Each (Lbs)
<b>Pull Plates (Cont.)</b>				
132 x 70B	Cast x 5-1/2" CTC	US32D	085771	2
132 x 70C	Cast x 5-1/2" CTC	US32D	085772	2
<b>Straight Door Pulls</b>				
106	3/4" x 6" CTC	US32D	085747	1.3
107	3/4" x 8" CTC	US32D	085751	1.6
110	1" x 8" CTC	US32D	085762	3
111	1" x 10" CTC	US32D	085764	3.5
<b>Offset Door Pulls</b>				
BF157	1" x 10" CTC	US28	085912	4.3
BF157	1" x 10" CTC	US32D	085915	4.3
BF157	1" x 10" CTC	314	085913	4.3
BF157BTB16	1" x 10"	US28	085919	8.6
BF158	1" x 12" CTC	US32D	085922	4.8
<b>Offset Push Pull Sets</b>				
BF15747CT3	10" Offset Push Pull Set	US28	085916	4.8
BF15747CT3	10" Offset Push Pull Set	US32D	085918	4.8
BF15747CT3	10" Offset Push Pull Set	315	085917	4.8
<b>Architectural Pulls</b>				
RM4820xRM4810BTB175.BSP	16" CTC 1.75" Door Thickness	BSP	086482	3.8
RM4820xRM4810BTB175.IS	16" CTC 1.75" Door Thickness	IS	086483	3.8
<b>Hands-Free Pulls</b>				
AP1007	Notched Arm Pull with Plate	US32DMS	086608	4.5
AP1140	1.5" Wide Arm Pull	US32DMS	086609	.6
AP1141	0.75" Slope Arm Pull	US32DMS	086610	.5
FP1230	Foot Pull with Grip	US32D	086611	1
<b>Latch Protectors</b>				
320-RKW	Cylindrical or Mortise	US32D	085783	1.2
320CL	Cylindrical	US32D	085784	1.2
321	Mortise	US32D	085785	1.2

Fax 877-888-2772, email [flashship@assaabloy.com](mailto:flashship@assaabloy.com) or use Online Order Entry at [www.assaabloydss.com/extranet](http://www.assaabloydss.com/extranet) by clicking the FlashShip™ icon  
 Note: FlashShip™ reserves the right to limit quantities.

Copyright © 2017-2020, ASSA ABLOY Door Security Solutions, an ASSA ABLOY Group company. All rights reserved.  
 Reproduction in whole or in part without the express written permission of ASSA ABLOY Door Security Solutions is prohibited.

**ASSA ABLOY**

Experience a safer  
and more open world





409 Concave Door Stop



430 Convex Door Stop



441H Dome Stop



446 Door Stop

Model #	Description	Finish	FlashShip™ #	Approx. Wt. Each (Lbs)
<b>Door Stops</b>				
400	Wall; Cast Convex	US26D	085787	0.3
403	Wall; Cast Concave	US10B	085788	0.3
403	Wall; Cast Concave	US26D	085789	0.3
406	Wall; Wrought Convex	US10BE	085790	0.2
406	Wall; Wrought Convex	US26D	085791	0.2
406	Wall; Wrought Convex	US32D	085792	0.2
409	Wall; Wrought Concave	US3	085797	0.2
409	Wall; Wrought Concave	US10	085793	0.2
409	Wall; Wrought Concave	US10BE	085794	0.2
409	Wall; Wrought Concave	US26	085795	0.2
409	Wall; Wrought Concave	US26D	085796	0.2
409	Wall; Wrought Concave	US32D	085798	0.2
415	Wall; Cast; Convex	US26D	085799	0.3
430	Wall; Convex	US26D	085800	0.1
440	Low Dome Stop	US10B	085801	0.2
440	Low Dome Stop	US26D	085802	0.2
441	Low Dome Stop	US10B	085803	0.2
441	Low Dome Stop	US26D	085804	0.2
441CU	Dome Stop Combination Unit	US26D	085805	0.3
441H	Cast Universal Dome Stop	US26D	085806	0.2
442	High Dome Stop	US10B	085807	0.2
442	High Dome Stop	US26D	085808	0.2
443	High Dome Stop	US26D	085809	0.2
445	Heavy Duty Door Stop	US26D	085810	0.3
446	Round Stop	US10B	085811	0.4
446	Round Stop	US26	085812	0.4
446	Round Stop	US26D	085813	0.4
455	Curved Roller Stop	US26D	085814	0.5
456	Straight Roller Stop	US26D	085815	0.5
456L	Straight Roller Stop	US26D	085816	0.5
459	Spring Loaded Plunger	US26D	085817	1.3
460	Kick Down Stop	ALM	085818	0.1
461	Kick Down Stop	US10B	085819	0.1
461	Kick Down Stop	US26D	085820	0.1
461L	Kick Down Stop	US10B	085821	0.1
461L	Kick Down Stop	US26D	085822	0.1

**ASSA ABLOY**

Experience a safer  
and more open world

Fax 877-888-2772, email [flashship@assaabloy.com](mailto:flashship@assaabloy.com) or use  
Online Order Entry at [www.assaabloydss.com/extranet](http://www.assaabloydss.com/extranet) by clicking the FlashShip™ icon

*Note: FlashShip™ reserves the right to limit quantities.*

Copyright © 2017-2020, ASSA ABLOY Door Security Solutions, an ASSA ABLOY Group company. All rights reserved.  
Reproduction in whole or in part without the express written permission of ASSA ABLOY Door Security Solutions is prohibited.



470 Door Stop



476 Door Stop

Model #	Description	Finish	FlashShip™ #	Approx. Wt. Each (Lbs)
<b>Door Stops (Cont.)</b>				
462	Heavy Duty Stop	US2C	085823	0.6
463	Heavy Duty Stop	US32D	085824	0.6
465	Heavy Duty Stop	US26D	085826	0.6
466	Heavy Duty Stop	N/A	085827	0.6
467	Heavy Duty Stop	N/A	085828	0.6
470	Door Stop	US26D	085829	0.7
471	Door Stop	US26D	085830	0.7
472	Floor Stop w/Keeper	US26D	085831	0.9
473	Floor Stop w/Keeper	US26D	085832	0.9
474	Door Stop	US26D	085833	0.7
476	Door Stop w/Keeper	US26D	085834	0.7
481	Door Stop	US26D	085836	0.6
481H	Door Stop	US26D	085837	0.6
482	Door Stop	US26D	085838	0.6
483	Door Stop	US26D	085839	0.6
485	Door Stop w/Keeper	US26D	085840	0.6
486	Angle Stop	US2C	085841	0.4
487	Heavy Duty Stop	US26D	085842	0.8
491	Automatic Holder with Stop	US26D	085843	0.8
494	Automatic Holder with Stop	US26D	085844	0.8
518	Cast Brass with DuraFlex Bumper	US26D	085847	0.2
519	Cast Brass with DuraFlex Bumper	US26D	085848	0.2
526	Spring Base Stop	NP	085850	0.2
528	Heavy Duty Hinge Pin Stop	NP	085851	0.2

Fax 877-888-2772, email [flashship@assaabloy.com](mailto:flashship@assaabloy.com) or use Online Order Entry at [www.assaabloydss.com/extranet](http://www.assaabloydss.com/extranet) by clicking the FlashShip™ icon

Note: FlashShip™ reserves the right to limit quantities.

Copyright © 2017-2020, ASSA ABLOY Door Security Solutions, an ASSA ABLOY Group company. All rights reserved. Reproduction in whole or in part without the express written permission of ASSA ABLOY Door Security Solutions is prohibited.

**ASSA ABLOY**

Experience a safer and more open world



555 Flush Bolt



570 Dust Strike



580 Surface Bolt

Model #	Description	Finish	FlashShip™ #	Approx. Wt. Each (Lbs)
<b>Lever Extension Flush Bolts</b>				
550	Flush Bolt	US26D	085852	0.8
555	Flush Bolt	US10B	085853	0.8
555	Flush Bolt	US26	085854	0.8
555	Flush Bolt	US26D	085855	0.8
555	Flush Bolt Extension Rod, 24"	—	086081	1
557	Flush Bolt	US26D	085856	0.8
<b>Dust Proof Strike</b>				
570	Strike	US10B	085857	0.4
570	Strike	US26D	085858	0.4
<b>Surface Bolts</b>				
580-8	8" Bolt Length	US26D	085859	1.1
630-4	4" Bolt Length	US26D	085883	0.8
<b>Roller Latches</b>				
590	w/Cast Strike	US26D	085860	0.6
591	w/ASA Strike	US26D	085861	0.6
592	w/#161 Strike	US26D	085862	0.6
593	w/Angle Stop	US26D	085863	0.6
594	w/#161 Strike	US26D	085864	0.6

**ASSA ABLOY**

Experience a safer  
and more open world

Fax 877-888-2772, email [flashship@assaabloy.com](mailto:flashship@assaabloy.com) or use  
Online Order Entry at [www.assaabloydss.com/extranet](http://www.assaabloydss.com/extranet) by clicking the FlashShip™ icon

*Note: FlashShip™ reserves the right to limit quantities.*

Copyright © 2017-2020, ASSA ABLOY Door Security Solutions, an ASSA ABLOY Group company. All rights reserved.  
Reproduction in whole or in part without the express written permission of ASSA ABLOY Door Security Solutions is prohibited.



603 Door Guard



614V Door Knocker/Viewer



622 Door Viewer



802 Coat Hook

Model #	Description	Finish	FlashShip™ #	Approx. Wt. Each (Lbs)
<b>Door Guards</b>				
602	Secret Gate Latch	US26D	085865	1
603	Cast Aluminum	DCRM	085867	0.4
604	Solid Cast Brass	US26D	085870	0.4
605	Brass Protection Plate	US26D	085871	0.3
606	Clear Rubber Wall Guard	N/A	085872	0.3
<b>Door Silencers</b>				
608	Gray Rubber	N/A	085873	0.01
608CA	Clear Rubber	N/A	085874	0.01
609	Gray Rubber	N/A	085875	0.01
<b>Door Knockers/Viewers</b>				
614V	Knocker/w 190° Viewer	US26D	085876	0.4
620	160° Viewer	CRM	085877	0.1
622	190° Viewer	ANT	085878	0.1
622	190° Viewer	BRS	085879	0.1
622	190° Viewer	CRM	085880	0.1
622	190° Viewer	DCRM	085881	0.1
622	190° Viewer	STNN	085882	0.1
627	Heavy Duty Privacy Viewer	CRM	086521	0.1
627	Heavy Duty Privacy Viewer	BLK	086522	0.1
<b>Coat Hooks</b>				
796	Small Double Hook	US26D	085895	0.3
802	Medium Hook	US26D	085896	0.4
806	Medium Hook	US26D	085897	0.4
<b>Misc. Gate Latch /Pulls/Catches</b>				
602	Secret Gate Latch	US26D	085865	1
853	Solid Wire Pull	US26D	085899	0.5
860	Flush Cup Pull	US32D	085900	0.9
872	Cast Flush Pull	US26D	085901	0.9
900	HD Magnetic Catch	ALM	085904	.25
901	XHD Magnetic Catch	ALM	085905	.35
<b>Coordinators</b>				
2601AB	Mounting Bracket	Black Prime Coat	085776	1
2601C	Mounting Bracket	Black Prime Coat	085777	1
2660	Coordinator	Black Prime Coat	085741	7
2672	Coordinator	Black Prime Coat	085778	8
2696	Coordinator	Black Prime Coat	085742	9.75
1700	Universal	Black Prime Coat	085775	2.65
<b>Automatic Flush Bolts</b>				
2842	Automatic	US26D	085779	2.4
2845	Self Latching	US26D	085780	2.4
2942	Automatic	US26D	085781	2.9
2945	Self Latching	US26D	085782	2.9

Fax 877-888-2772, email [flashship@assaabloy.com](mailto:flashship@assaabloy.com) or use  
Online Order Entry at [www.assaabloydss.com/extranet](http://www.assaabloydss.com/extranet) by clicking the FlashShip™ icon

Note: FlashShip™ reserves the right to limit quantities.

Copyright © 2017-2020, ASSA ABLOY Door Security Solutions, an ASSA ABLOY Group company. All rights reserved.  
Reproduction in whole or in part without the express written permission of ASSA ABLOY Door Security Solutions is prohibited.

**ASSA ABLOY**

Experience a safer  
and more open world

# Protection Plates and Lite Kits



2600 Coordinator

1700 Universal Coordinator

2842 Automatic Flush Bolt

R111LPB Trim Protector Bar

K1050 Kick Plate

Model #	Description	Finish	FlashShip™ #	Approx. Wt. Each (Lbs)
<b>Filler Plates</b>				
DFF4	Frame Hinge	Prime Coat	085924	0.02
LF161	Door Edge	Prime Coat	085927	0.02
DF86	Door Edge	Prime Coat	085923	0.02
SFASA	Strike	Prime Coat	085929	0.02
HS42	Hinge Shim -.028" Thick	—	085925	0.1
HS44	Hinge Shim -.065" Thick	—	085926	0.1
<b>Trim Protection Bars</b>				
R111LPB	Lever Handle	US32D	085928	2.6
<b>Protection Plates</b>				
K1050	4 x 35BE	US32D	085845	2
K1050	6 x 34BE	US32D	085884	3
K1050	8 x 34BE	US10B	085930	4
K1050	8 x 34BE	US32D	085902	4
K1050	8 x 35BE	US32D	085903	4.5
K1050	10 x 34BE	US10B	085932	5.5
K1050	10 x 34BE	US28	085931	3
K1050	10 x 34BE	US32D	085755	5
K1050	10 x 34-1/2BE	US32D	085758	5
K1050	10 x 35BE	US32D	085759	5.5
K1050	10 x 40BE	US32D	085760	6
K1050	10 x 46BE	US32D	085761	5
K1050	12 x 34BE	US32D	085770	6
K1050	16 x 34BE	US32D	085774	8
K1050	34 x 34 BE	US32D	085786	17

Model #	Cutout Size	Finish	FlashShip™ #	Approx. Case Wt. (Lbs)
<b>Lite Kits (sold in case quantities; 3 lite kits per case)</b>				
LT-B1	7" x 22"	Gray Primer	086073	12
LT-B1	12" x 12"	Gray Primer	086074	12
LT-B1	6" x 27"	Gray Primer	086075	12
LT-B1	24" x 30"	Gray Primer	086076	21
LT-B1	5" x 35"	Gray Primer	086490	15
LT-B1	8" x 32"	Gray Primer	086491	15
LT-B1	10" x 10"	Gray Primer	086492	8
LT-B1	24" x 24"	Gray Primer	086493	18
LT-B1	24" x 32"	Gray Primer	086494	22
LT-B1	24" x 34"	Gray Primer	086495	22
LT-B1	24" x 36"	Gray Primer	086496	22

**ASSA ABLOY**

Experience a safer  
and more open world

Fax 877-888-2772, email [flashship@assaabloy.com](mailto:flashship@assaabloy.com) or use  
Online Order Entry at [www.assaabloydss.com/extranet](http://www.assaabloydss.com/extranet) by clicking the FlashShip™ icon

*Note: FlashShip™ reserves the right to limit quantities.*

Copyright © 2017-2020, ASSA ABLOY Door Security Solutions, an ASSA ABLOY Group company. All rights reserved.  
Reproduction in whole or in part without the express written permission of ASSA ABLOY Door Security Solutions is prohibited.



BFM Series ADA Molded Plastic Signs



Lite Kits

Model #	Description	Finish	FlashShip™ #	Approx. Wt. Each (Lbs)
<b>Lite Kits (sold in case quantities; 3 lite kits per case) (Cont.)</b>				
LT-B1	5" x 35"	Dark Bronze	086510	15
LT-B1	8" x 32"	Dark Bronze	086511	15
LT-B1	10" x 10"	Dark Bronze	086512	8
LT-B1	24" x 24"	Dark Bronze	086513	18
LT-B1	24" x 32"	Dark Bronze	086514	22
LT-B1	24" x 34"	Dark Bronze	086515	22
LT-B1	24" x 36"	Dark Bronze	086516	22
LT-B1	7" x 22"	Dark Bronze	086517	12
LT-B1	6" x 27"	Dark Bronze	086518	12
LT-B1	12" x 12"	Dark Bronze	086519	12
LT-B1	24" x 30"	Dark Bronze	086520	21

Model #	Description	Finish	FlashShip™ #	Approx. Wt. Each (Lbs)
<b>BFM Series ADA Molded Plastic Signs</b>				
BFM687.BLACK	BFM Series ADA Molded Plastic Signs	Black	086497	1
BFM688.BLACK	BFM Series ADA Molded Plastic Signs	Black	086498	1
BFM689.BLACK	BFM Series ADA Molded Plastic Signs	Black	086499	1
BFM687.BLUE	BFM Series ADA Molded Plastic Signs	Blue	086603	1
BFM688.BLUE	BFM Series ADA Molded Plastic Signs	Blue	086604	1
BFM689.BLUE	BFM Series ADA Molded Plastic Signs	Blue	086605	1

Fax 877-888-2772, email [flashship@assaabloy.com](mailto:flashship@assaabloy.com) or use  
 Online Order Entry at [www.assaabloydss.com/extranet](http://www.assaabloydss.com/extranet) by clicking the FlashShip™ icon  
 Note: FlashShip™ reserves the right to limit quantities.

Copyright © 2017-2020, ASSA ABLOY Door Security Solutions, an ASSA ABLOY Group company. All rights reserved.  
 Reproduction in whole or in part without the express written permission of ASSA ABLOY Door Security Solutions is prohibited.

**ASSA ABLOY**

Experience a safer  
and more open world

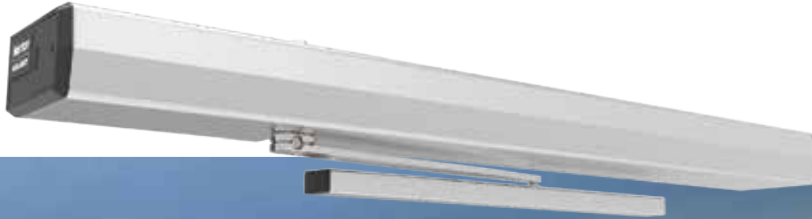
# 6300 SERIES

## Low Energy Door Operator

**Norton**<sup>®</sup>

**ASSA ABLOY**

Experience a safer  
and more open world



PROGRAMMING  
**POWER**  
IN THE PALM  
OF YOUR HANDS

Step-by-step setup right from your WiFi-enabled device – **no app needed!**

- » Set precise values for speed, force, timing and location
- » Turn on/off countless options
- » WiFi access is unique to each unit and enhanced with additional security settings
- » Customize input functions
- » Save and employ settings across multiple units

See the 6300 Series in action: [NortonDoorControls.com/6300](https://NortonDoorControls.com/6300)





8501



7500



6300



1601



5800 ADAEZ

Model #	Description	Finish	FlashShip™ #	Approx. Wt. Each (Lbs)
<b>Door Closers, Non-Hold Open</b>				
8501	Tri-pack, Multi-Size 1-6	689	086267	8
8501	Tri-pack, Multi-Size 1-6	690	086268	8
CLP8501	Heavy Duty Arm, Multi-Size 1-6	689	086354	10.9
7500	Tri-Pack, Multi-Size 1-6	689	086307	9.9
7500	Tri-Pack, Multi-Size 1-6	690	086308	9.9
CLP7500	Heavy-Duty Arm, Multi-Size 1-6	689	086351	12.2
CPS7500	Heavy-Duty Arm with Spring, Multi-Size 1-6	689	086350	12.2
1601	Tri-Pack, Multi-Size 1-6	689	086269	7.2
1601	Tri-Pack, Multi-Size 1-6	690	086270	7.2
<b>Door Closers, Hold Open</b>				
8501H	Tri-Pack, Multi-Size 1-6	689	086353	9.3
7500H	Tri-Pack, Multi-Size 1-6	689	086352	11
<b>Door Operators</b>				
5845 x SQPB	Operator, Push Buttons, Mounting Hardware & Covers	693T	086271	20
6341 x 689	Operator, Push and Pull Arms, Mounting Hardware & Cover	689	086484	51
ADA1028W	Wireless Interface Module	N/A	086359	25
565	RF Activation Kit - Includes (2) Door Switches, (2) Transmitters and (1) Receiver, for use with operators.	N/A	086523	4.5

Fax 877-888-2772, email [flashship@assaabloy.com](mailto:flashship@assaabloy.com) or use Online Order Entry at [www.assaabloydss.com/extranet](http://www.assaabloydss.com/extranet) by clicking the FlashShip™ icon  
 Note: FlashShip™ reserves the right to limit quantities.

Copyright © 2017-2020, ASSA ABLOY Door Security Solutions, an ASSA ABLOY Group company. All rights reserved. Reproduction in whole or in part without the express written permission of ASSA ABLOY Door Security Solutions is prohibited.

**ASSA ABLOY**

Experience a safer and more open world

**RIXSON®**

**ASSA ABLOY**



Fax 877-888-2772, email [flashship@assaabloy.com](mailto:flashship@assaabloy.com) or use  
Online Order Entry at [www.assaabloydss.com/extranet](http://www.assaabloydss.com/extranet) by clicking the FlashShip™ icon  
*Note: FlashShip™ reserves the right to limit quantities.*

Copyright © 2017-2020, ASSA ABLOY Door Security Solutions, an ASSA ABLOY Group company. All rights reserved.  
Reproduction in whole or in part without the express written permission of ASSA ABLOY Door Security Solutions is prohibited.

**ASSA ABLOY**

Experience a safer  
and more open world




147 Offset Pivot



195 Offset Pivot



370 Center Hung Pivot

EM19 Power Transfer  
Intermediate Pivot

Model #	Description	Hand	Finish	FlashShip™ #	Approx. Wt. Each (Lbs)
<b>3/4" Offset Pivot Sets (Includes Top Pivot)</b>					
117	Regular (250#) Interior	RH	626	085422	3
117	Regular (250#) Interior	LH	626	085423	3
147	Regular (500#) Interior/Exterior	RH	613	085428	2
147	Regular (500#) Interior/Exterior	LH	613	085429	2
147	Regular (500#) Interior/Exterior	RH	626	085426	2
147	Regular (500#) Interior/Exterior	LH	626	085427	2
L147	Heavy Weight (700#) Lead 1-3/4" Door	RH	626	085430	5
L147	Heavy Weight (700#) Lead 1-3/4" Door	LH	626	085431	5
195	Regular (400#) Frame Attached	RH	613	085436	3
195	Regular (400#) Frame Attached	LH	613	085437	3
195	Regular (400#) Frame Attached	RH	626	085434	3
195	Regular (400#) Frame Attached	LH	626	085435	3
<b>Center Hung Pivot Sets (Includes Top Pivot)</b>					
128-3/4	250#	—	613	085441	2
128-3/4	250#	—	626	085440	2
127-3/4	250# Frame Attached	—	613	085439	2
127-3/4	250# Frame Attached	—	626	085438	2
370	400#	—	613	085443	3
370	400#	—	626	085442	3
<b>Intermediate Pivots</b>					
M19	Regular	RH	613	085446	2
M19	Regular	LH	613	085447	2
M19	Regular	RH	626	085444	2
M19	Regular	LH	626	085445	2
EM19	Low Voltage Transfer Pivot, ElectroLynx® 8-Wire	RH	626	085448	2
EM19	Low Voltage Transfer Pivot, ElectroLynx® 8-Wire	LH	626	085449	2

Fax 877-888-2772, email [flashship@assaabloy.com](mailto:flashship@assaabloy.com) or use  
Online Order Entry at [www.assaabloydss.com/extranet](http://www.assaabloydss.com/extranet) by clicking the FlashShip™ icon  
Note: FlashShip™ reserves the right to limit quantities.

Copyright © 2017-2020, ASSA ABLOY Door Security Solutions, an ASSA ABLOY Group company. All rights reserved.  
Reproduction in whole or in part without the express written permission of ASSA ABLOY Door Security Solutions is prohibited.



Experience a safer  
and more open world

**RIXSON®**



Checkmate® Stops & Holders



994 Electromagnetic Holder/Release

Model #	Description	Finish	FlashShip™ #	Approx. Wt. Each (Lbs)
<b>Checkmate® Stops and Holders</b>				
<b>Concealed</b>				
1-326	Heavy Duty Holder, Size 3	613	085457	5
1-326	Heavy Duty Holder, Size 3	630	085455	5
1-336	Heavy Duty Stop, Size 3	613	085456	5
1-336	Heavy Duty Stop, Size 3	630	085454	5
6-336	Low Profile Stop, Size 3	630	085462	5
2-346	Standard Duty Adjustable Combo, Size 3	613	085465	2
2-346	Standard Duty Adjustable Combo, Size 3	630	085464	2
<b>Surface</b>				
9-326	Heavy Duty Holder, Size 3	613	085461	4
9-326	Heavy Duty Holder, Size 3	630	085459	4
9-336	Heavy Duty Stop, Size 3	613	085460	4
9-336	Heavy Duty Stop, Size 3	630	085458	4
10-346	Standard Duty Adjustable Combo, Size 3	613	085467	2
10-346	Standard Duty Adjustable Combo, Size 3	630	085466	2
<b>Electromagnetic Door Holder/Releases</b>				
<b>Triple Voltage Door Holders (12VDC, 24VAC/DC and 120VAC)</b>				
996M	Surface Wired	689	085472	2
996M	Surface Wired	690	085473	2
994M	Adjustable Short Armature Concealed Wiring	689	085470	2
994M	Adjustable Short Armature Concealed Wiring	690	085471	2
980M	Floor Mounted	689	085468	3
980M	Floor Mounted	690	085469	3
997M	Wall Mounted	689	086077	2
997M	Wall Mounted	690	086078	2
998M	Wall Mounted	689	086079	3
998M	Wall Mounted	690	086080	3
<b>Armature Extensions</b>				
900	Base Unit	689	085474	0.1
900	Base Unit	690	085475	0.1
900-50	1/2" Armature Extension Filler*	689	085476	0.1
900-50	1/2" Armature Extension Filler*	690	085477	0.1
900-75	3/4" Armature Extension Filler*	689	085478	0.1
900-75	3/4" Armature Extension Filler*	690	085479	0.1
900-100	1" Armature Extension Filler*	689	085480	0.1
900-100	1" Armature Extension Filler*	690	085481	0.1

\*Extension spacers and bend must be used with 900 base unit armature extension

**ASSA ABLOY**

Experience a safer and more open world

Fax 877-888-2772, email [flashship@assaabloy.com](mailto:flashship@assaabloy.com) or use Online Order Entry at [www.assaabloydss.com/extranet](http://www.assaabloydss.com/extranet) by clicking the FlashShip™ icon

Note: FlashShip™ reserves the right to limit quantities.

Copyright © 2017-2020, ASSA ABLOY Door Security Solutions, an ASSA ABLOY Group company. All rights reserved. Reproduction in whole or in part without the express written permission of ASSA ABLOY Door Security Solutions is prohibited..





**ASSA ABLOY**

Experience a safer  
and more open world



# **ASSA ABLOY**

Experience a safer  
and more open world

**ASSA ABLOY**

Experience a safer  
and more open world

The ASSA ABLOY Group is the global leader in access solutions. Every day, we help billions of people experience a more open world.

ASSA ABLOY Opening Solutions leads the development within door openings and products for access solutions in homes, businesses and institutions. Our offering includes doors, frames, door and window hardware, locks, perimeter fencing, access control and service.

## Industry-Leading Brands

*To bring you the best and most complete security and life-safety solutions, ASSA ABLOY provides the products of brands known for quality, service and innovation. This group of hardware manufacturers works together to create openings that are strong, durable and meet today's needs for advanced safety and security solutions.*

ASSA ABLOY Architectural Door Accessories | [www.assaabloydooraccessories.us](http://www.assaabloydooraccessories.us)  
McKinney hinges, Markar and Pemko continuous hinges, Pemko thresholds, gasketing, sliding door hardware, lites and louvers, and Rockwood Architectural door pulls, stops and holders, bolts and latches, speciality door trim

NORTON | [www.nortondoortcontrols.com](http://www.nortondoortcontrols.com)  
Low energy door operators, and mechanical and electromechanical door closers

RIXSON | [www.rixson.com](http://www.rixson.com)  
Concealed closers, pivots and mechanical/ electromechanical door holders

YALE | [www.yalelocks.com](http://www.yalelocks.com)  
Mortise, cylindrical & auxiliary locks, exit devices, door closers, electromechanical products, and key systems

ASSA ABLOY Door Security Solutions  
110 Sargent Drive  
New Haven, CT 06511  
800.DSS.EZ4U (377.3948) | 203.624.5225  
[www.assaabloydss.com](http://www.assaabloydss.com)

**We are where you are.  
Connect with us online:**

 [www.facebook.com/assaabloydss](http://www.facebook.com/assaabloydss)

 [www.twitter.com/assaabloydssus](http://www.twitter.com/assaabloydssus)