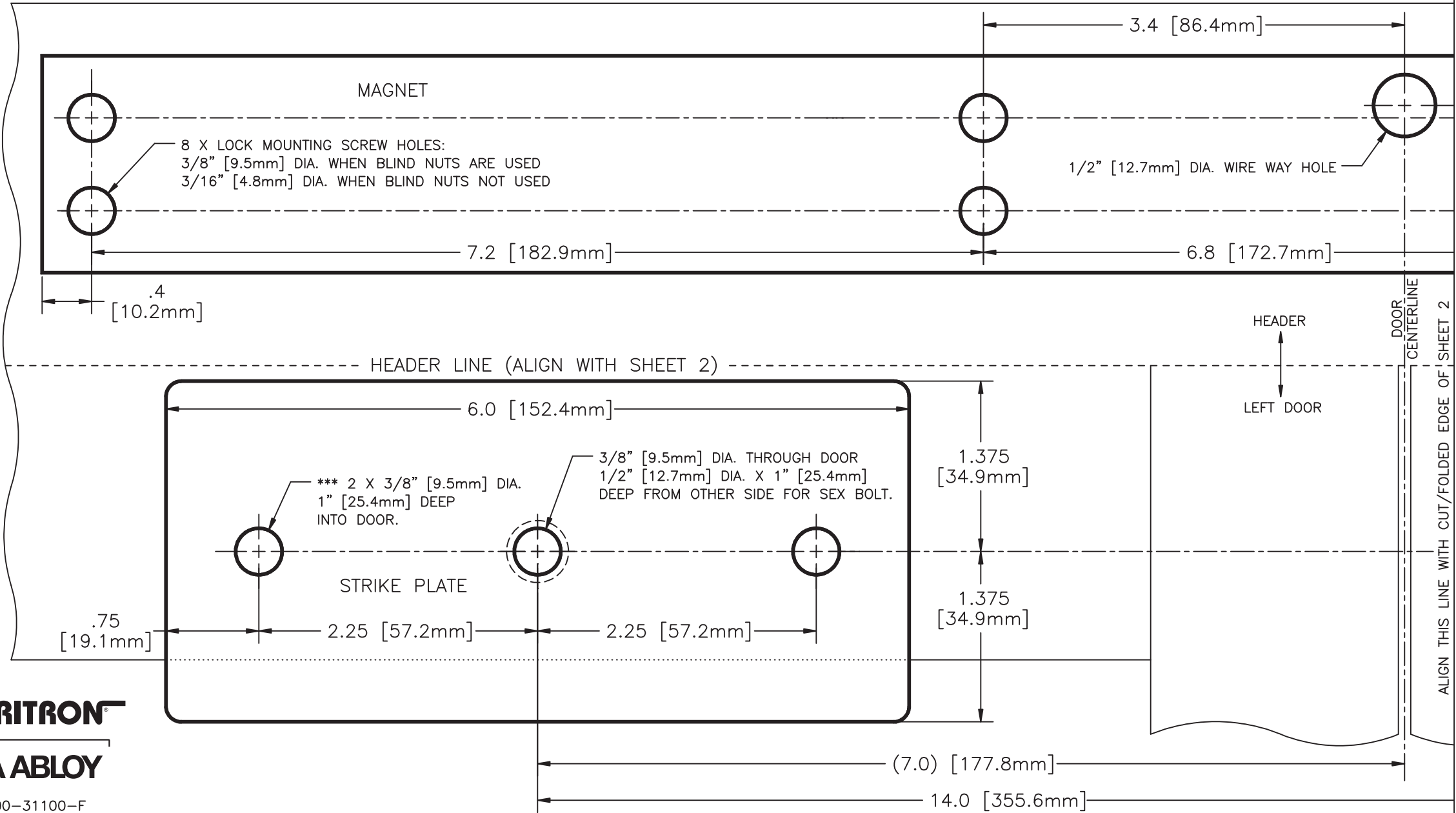


# DM62 SERIES DOUBLE MAGNALOCK INSTALLATION TEMPLATE

*DO NOT PHOTOCOPY THIS TEMPLATE!!! – (SCALE MAY BE AFFECTED)*

!!! WARNING: DO NOT DRILL INTO MAGNET OR STRIKE FOR ANY REASON !!!

1. Cut or fold sheet 2 along the indicated vertical line.
2. Place the vertical cut/fold line of sheet 2 on top of sheet 1 aligning it to the vertical printed line indicated. Ensure that the horizontal "HEADER LINE" of each sheet is aligned and then tape sheets together.
3. Fold the taped template along the HEADER LINE. Center the template between doors and orient with the lock mounting holes against the door frame header and the strike mounting holes against the door surface.



**SECURITRON**

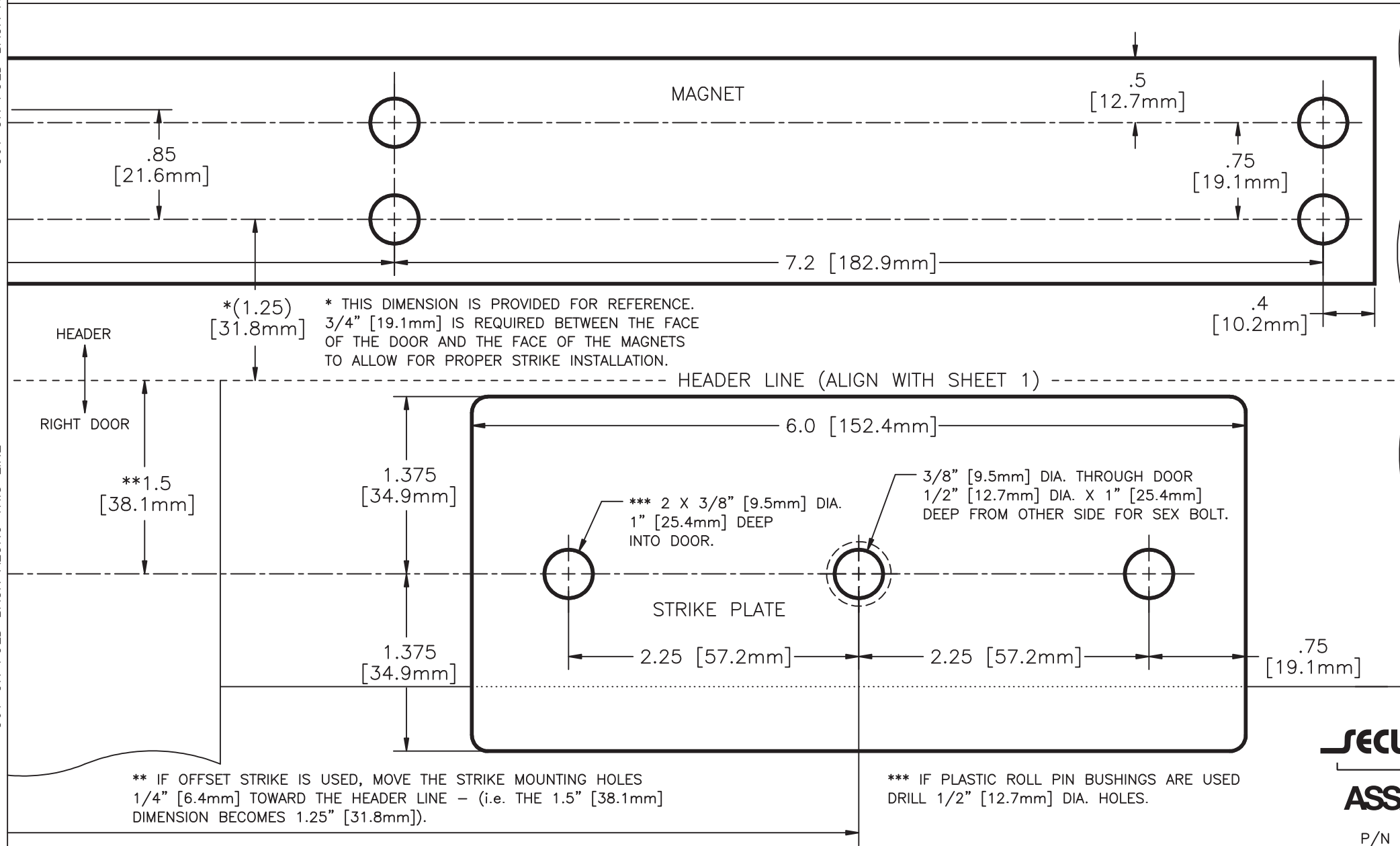
**ASSA ABLOY**

P/N 500-31100-F  
 (Sheet 1 of 2)

4. The relationship between the magnet mounting holes is critical. Do not let your marking or drilling wander. It is best to use a center punch to create indentations at all drill locations.
5. Do not overdrill the diameter of the 3/8" [9.5mm] magnet mounting holes or the blind nuts will not seat.
6. Make sure the blind nuts are fully collapsed.
7. DO NOT OVER TIGHTEN THE MAGNET MOUNTING SCREWS. Use the provided threadlocker on all screw threads.
8. Be careful not to scrape the magnet cables when pushing it back into the frame.
9. The two rubber washers stack one on top of the other and mount in between the strike and the door around the center strike mounting screw. DO NOT PLACE THE WASHERS ON THE ROLL PINS.
10. When inserting the sex bolts from the outside of the doors, do not insert them fully until you have started the mating screws from the other side. This insures that the sex bolts will go in straight.
11. DO NOT OVER TIGHTEN THE STRIKE MOUNTING SCREWS INTO THE SEX BOLTS.
12. Make sure the strike plates float and pivot around the center mounting screws. This compensates for door misalignments. IF THE STRIKES ARE MOUNTED RIGIDLY, THE MAGNALOCKS WILL NOT HOLD.

CUT OR FOLD BACK ALONG THIS LINE

CUT OR FOLD BACK ALONG THIS LINE



\*(1.25) [31.8mm]

\* THIS DIMENSION IS PROVIDED FOR REFERENCE. 3/4" [19.1mm] IS REQUIRED BETWEEN THE FACE OF THE DOOR AND THE FACE OF THE MAGNETS TO ALLOW FOR PROPER STRIKE INSTALLATION.

MAGNET

STRIKE PLATE

HEADER LINE (ALIGN WITH SHEET 1)

HEADER

RIGHT DOOR

\*\* IF OFFSET STRIKE IS USED, MOVE THE STRIKE MOUNTING HOLES 1/4" [6.4mm] TOWARD THE HEADER LINE - (i.e. THE 1.5" [38.1mm] DIMENSION BECOMES 1.25" [31.8mm]).

\*\*\* IF PLASTIC ROLL PIN BUSHINGS ARE USED DRILL 1/2" [12.7mm] DIA. HOLES.

\*\*\* 2 X 3/8" [9.5mm] DIA. 1" [25.4mm] DEEP INTO DOOR.

3/8" [9.5mm] DIA. THROUGH DOOR 1/2" [12.7mm] DIA. X 1" [25.4mm] DEEP FROM OTHER SIDE FOR SEX BOLT.

**SECURITRON**  
**ASSA ABLOY**

P/N 500-31100-F  
(Sheet 2 of 2)