



---

# 5800 Series

Cast Iron Door Closers



An ASSA ABLOY Group brand

**ASSA ABLOY**



# Introduction

## CONTENTS

Introduction .....	2
Features & Benefits .....	3
Finishes .....	4
How to Order .....	5
Functions & Arm Options .....	5
Arm Option.....	6
Model/Part Numbers .....	7
Accessories .....	8

## 5800 SERIES CAST IRON DOOR CLOSERS

With its modern design and adjustable operation, Yale 5800 Series Cast Iron Door Closers provide an attractive solution for retail, office, government and other commercial facilities. Heavy-duty and hold open arms, along with adjustable spring size, backcheck, closing and latch speed, provide a flexible and economical closer that you can trust for dependable service. The 5800 Series is certified to ANSI/BHMA Grade 1 requirements for long life and reliability, and offers a 10 year warranty. With a full feature set and stylish design, Yale Works for You<sup>SM</sup>.








## Features & Benefits



### FEATURES

- ANSI/BHMA A156.4 Grade 1 certified
- Adjustable spring sizes 1 - 6
- Cast iron closer body
- Standard and heavy-duty arms available as hold open or non-hold open
- Adjustments for backcheck, closing and latch speed
- Tri-packed for parallel, regular or top jamb installation
- Sleeve nuts and bolts provided with each closer
- Retrofit for LCN 4040XP
- Non-handed
- Plastic cover
- 10 year warranty

### COMPLIANCE STANDARDS

- Certified for ANSI/BHMA A156.4 Grade 1 
- 90 minute positive pressure fire rating per UL10c and CAN / ULC S104 
- Meets requirements for Americans with Disabilities Act (ADA) and ANSI/BHMA A117.1 

### BENEFITS

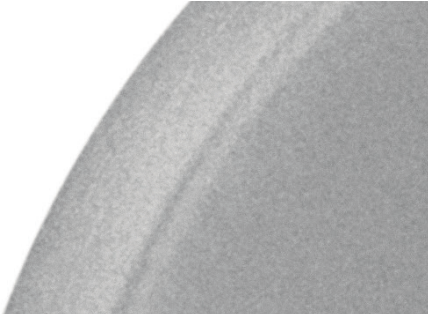
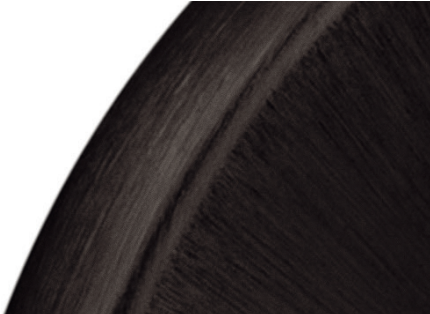
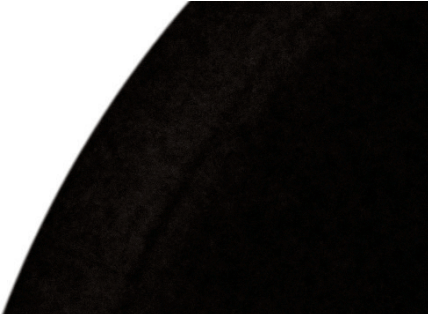
- **Reliable:** Adjustable spring power, latch and closing speeds ensure positive latching
- **Flexible:** Choice of standard or heavy-duty arms and adjustable spring power meets needs of any application
- **Hassle-Free Retrofits:** Easily replaces competitive closers
- **Strong and Durable:** ANSI/BHMA Grade 1 certified for long life

### CAUTION: Door Closers for Low Opening Force Applications:

Door closers installed in openings required to meet the requirements of the Americans With Disabilities Act or ANSI/BHMA Standard A117.1, when adjusted to meet those requirements, may not provide adequate closing power to dependably close and latch the door based on opening or site conditions.

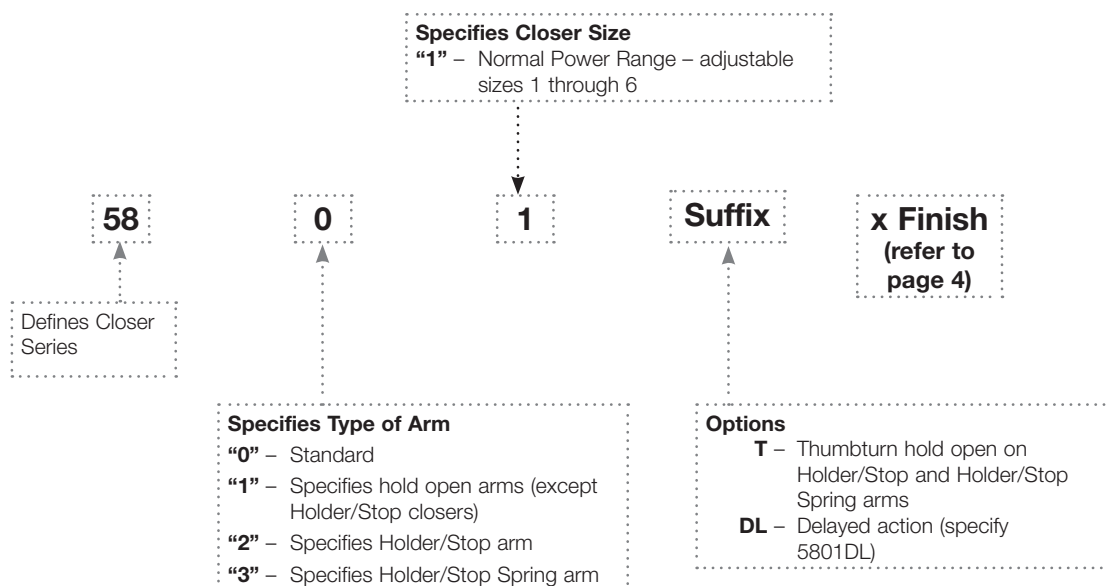


## Finishes

ANSI/BHMA Code Finish Description		
689 Aluminim Painted	690 Dark Bronze Painted	BSP Black Suede Powder Coat
		



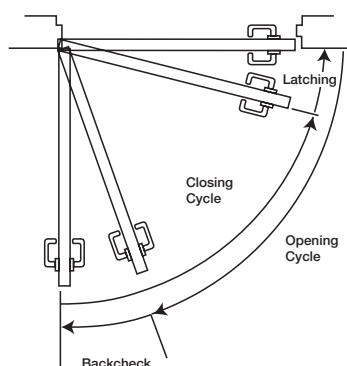
## How To Order



## FUNCTIONS

- Backcheck
- Closing speed
- Latching speed
- Delayed action; specify 5801DL

## DOOR CLOSING LATCHING CYCLE



## ARMS

### Non-Hold Open

Self-closes door every time door is opened. Auxiliary stop (by others) required except when using the Holder/Stop arm.

### Hold Open

Achieved by means of friction or ball and detent/roller. Friction hold open has a range of 90° to 180° using template location and mechanical adjustment. Ball and detent or roller hold open is effective in a range of 85° to 110°.

Hold open arm door closers are not permitted to be used on fire door assemblies.

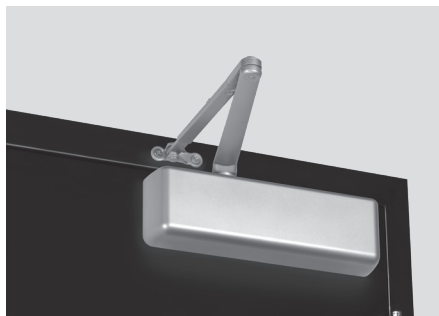
### Notes:

- For heavy-duty parallel rigid arm applications, specify 5821 or 5821T, stop is removable.
- Door closer warranty becomes void if the closer is installed on the exterior side of a door in the exterior wall of a building.
- It is strongly recommended, and may be required on fire door assemblies, that doors having a door closer be hung on ball-bearing or anti-friction hinges or pivots. Consult local authority having jurisdiction.
- Failure to use fasteners supplied with closer may void factory warranty.
- Fasteners for fire/smoke door assemblies must conform to NFPA 80. In some applications additional fasteners may be mandated by NFPA 80 that are not shipped with standard Yale product, such as sleeve-nuts/sex-nuts or thru bolts and grommet nuts.
- Information provided is based on 1-3/4" (44mm) x 7' (2.13m) standard weight doors swinging to 110°. Other conditions (such as door height or weight; or wind/draft conditions) may require adjustment of spring setting, selection of a larger size closer or different closer.



## Arm Options

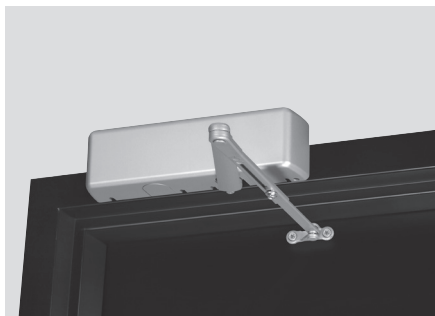
### Regular Arm



*Non-hold open arm shown, hold open application available.*

- Pull side application, double lever arm
- Sufficient frame, door and/or ceiling clearance must be considered
- Due to arm projection, application may present an aesthetics issue or be prone to vandalism

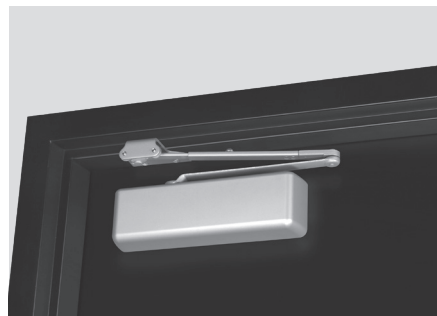
### Top Jamb



*Non-hold open arm shown, hold open application available.*

- Push side application
- Sufficient frame face and/or ceiling clearance must be considered
- 2-1/4" (57mm) top rail on door is required
- Best door control for doors in exterior walls that swing out of building
- Consideration must be given to depth of reveal

### Parallel Arm



*Non-hold open arm shown, hold open application available.*

- Push side application
- In the closed position, there is little or no hardware projection beyond the frame face
- Due to arm geometry, approximately 25% less power-efficient than regular arm application
- Closer and arm mounted below the frame stop

## HOLDER/STOP ARM



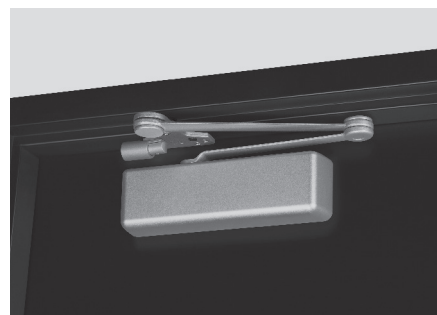
*5821T (hold open) shown*

- Holder/Stop arms incorporate a stop at the arm's soffit plate to dead stop the door at a predetermined degree of door swing between 85° and 110°, in 5° increments
- Prior to dead stop, backcheck slows the door speed to reduce the stop action



*5821 (non-hold open, without stop) shown*

- Holder/Stop arm is intended for use where an auxiliary door stop cannot be used and low to moderate abuse is anticipated
- Stop is removable to allow for additional applications where auxiliary door stops are installed



*5831 (non-hold open, with spring) shown*

- Holder/Stop Spring arms incorporate a buffer spring that provides greater protection at the end of the door opening cycle
- Spring is removable

**Consult factory if door weight exceeds 250 lbs.**

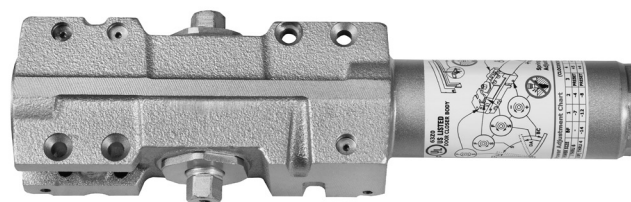


## Model/Part Numbers

Model Number	Description
5801	Non-Hold Open Tri-Packed
5801DL	Non-Hold Open Tri-Packed, Delayed Action
5811	Hold Open Tri-Packed
5821	Heavy-Duty Non-Hold Open Parallel Arm with Removable Stop
5821T	Heavy-Duty Hold Open Parallel Arm with Thumbturn and Removable Stop
5831	Heavy-Duty Non-Hold Open Parallel Arm with Spring and Removable Stop
5831T	Heavy-Duty Hold Open Parallel Arm with Thumbturn, Spring and Removable Stop

Note: for heavy-duty parallel rigid arm applications, specify 5821 or 5821T, stop is removable.

See page 5 for more how to order info.



Miscellaneous Parts*	
Part Number	Description
5800COV	Full Plastic Cover
5800SP	Screw Pack
2730Kit	Door Saver Spring Stop

\*Specify finish when ordering.

Cover Dimensions		
Width	Length	Projection
3-1/2" (89mm)	12-1/4" (311mm)	2-1/4" (57mm)

Optional Fasteners	
Part Number	Description
SN-134	Sleeve Nuts
TBGN134-47	Through-Bolts & Grommet Nuts

Note: Sleeve nuts furnished standard with all models.

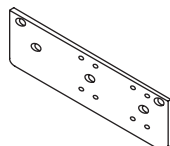


2730Kit



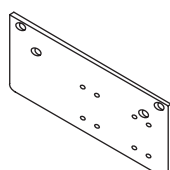
## Accessories

### CLOSER MOUNTING PLATES



**5800RDP Narrow Frame Drop Plate (regular arm):**

Required for hinge side mount where top rail is less than 3-3/4" (95mm). Plate requires 2" (51mm) minimum top rail.



**5800PDP Narrow Top Rail Drop Plate (parallel arm):**

Required for parallel arm mounting where top rail is less than 5-1/2" (140mm), measured from the stop. Plate requires 2" (51mm) minimum top rail.

**Note: All measurements are Inches/mm.**





---

## Notes



---

## Notes



---

## Notes

---

## Contact Us

The world's favorite lock



### U.S.A.

#### Yale Locks & Hardware

Address: 225 Episcopal Road  
Berlin, CT 06037-4004  
Tel: 1-800-438-1951  
Fax: 1-800-338-0965  
[yalelocks.com](http://yalelocks.com)

### Canada:

#### ASSA ABLOY Door Security Solutions Canada

Address: 160 Four Valley Drive  
Vaughan, Ontario L4K 4T9  
Tel: 1-800-461-3007  
Fax: 1-800-461-8989  
[assaabloydss.ca](http://assaabloydss.ca)

### International:

#### ASSA ABLOY Americas International

Tel: 1-905-821-7775  
Fax: 1-905-821-1429  
[assaabloyai.com](http://assaabloyai.com)

Yale Commercial is a business associated with ASSA ABLOY Access and Egress Hardware Group, Inc., an ASSA ABLOY Group company. Copyright © 2012-2020, ASSA ABLOY Access and Egress Hardware Group, Inc. All rights reserved. Reproduction in whole or in part without the express written permission of ASSA ABLOY Access and Egress Hardware Group, Inc. is prohibited. Patent pending and or patent [www.assaabloydss.com/patents](http://www.assaabloydss.com/patents).

**YALE**, with its unique global reach and range of products, is the world's favorite lock.

**ASSA ABLOY** is the global leader in door opening solutions, dedicated to satisfying end-user needs for security, safety and convenience.

42835-6/20