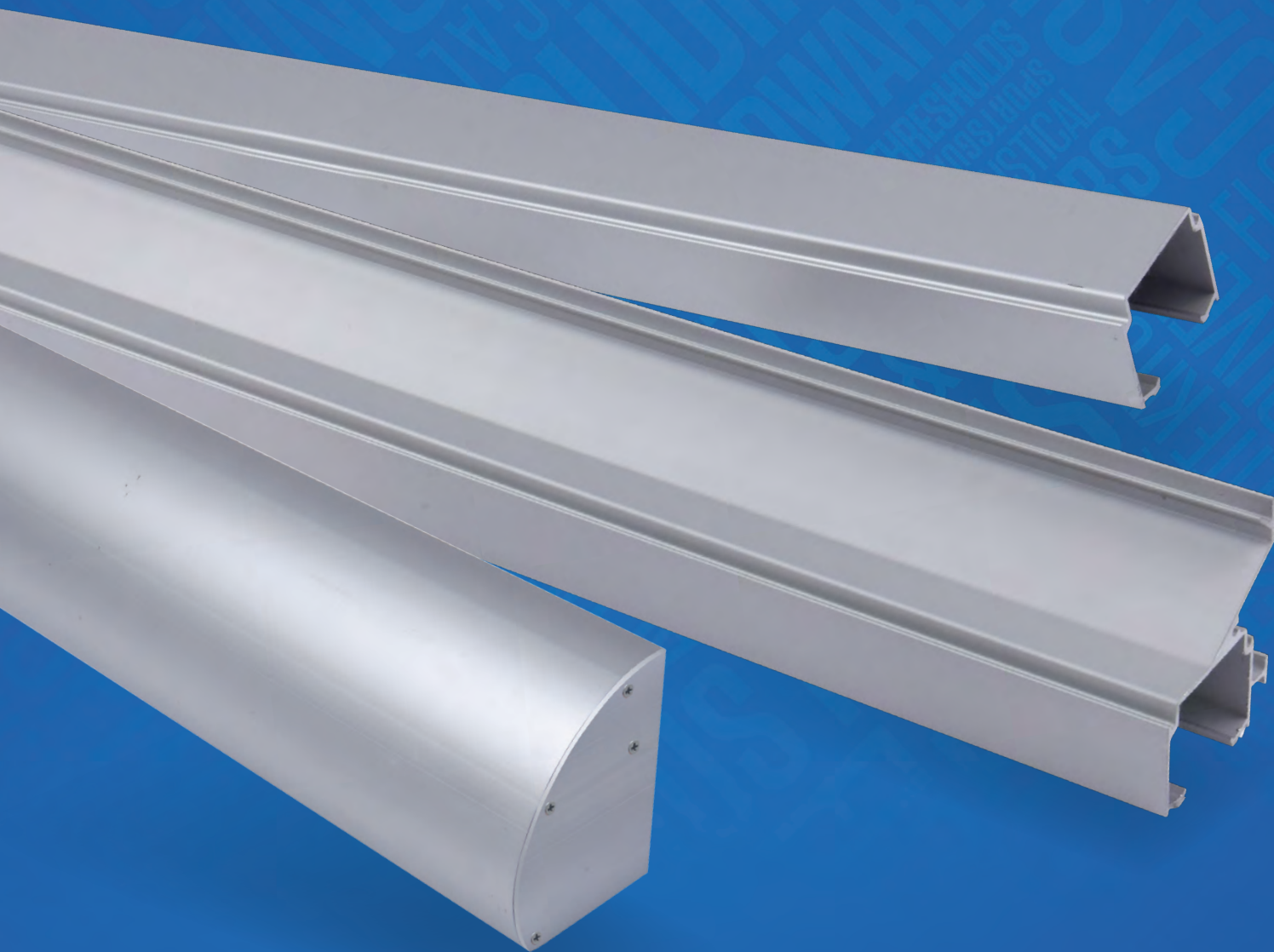




SLIDING DOOR

— HARDWARE —





SLIDING DOOR HARDWARE INDEX:

	Page
Aluminum:	
Bi-Fold Sliding Door Hardware	SL2
Bi-Parting Sliding Door Hardware	SL7
By-Passing Sliding Door Hardware	SL1, SL3
Side Wall Mount Sliding Door Hardware	SL4
Pocket Door Hardware	SL5
Pocket Door Hardware with Frame Kit	SL6
Stainless Steel:	
Barn Door Hardware — Side Mount	SL9
Barn Door Hardware — Top Mount	SL8
Accessories:	
Drywall Spacer for Stainless Steel Track	SL11
Sliding Door Hardware Accessories	SL10
Soft Close for Aluminum Sliding Door Hardware	SL12

NUMERICAL INDEX:

SC.....	SL12	SLAL-75-BP.....	SL1	SLSS1-6.....	SL8
SCBY	SL12	SLAL-250-BP-2DR.....	SL3	SLSS1-6-SC.....	SL8
SL-BCG	SL10	SLAL-250-BP-4DR.....	SL3	SLSS1-8	SL8
SL-RD.....	SL4	SLAL-250-PD	SL5, SL7	SLSS1-8-SC.....	SL8
SL-SQ18	SL4	SLAL-250-PDKIT	SL6	SLSS2-6	SL9
SL-SQ20	SL3, SL5, SL7	SLAL-250-SW	SL4	SLSS2-6-SC.....	SL9
SL-WG.....	SL10	SLSS-FG	SL10	SLSS2-8.....	SL9
SLAL-75-BF2DR.....	SL2	SLSS-DWS-6.....	SL11	SLSS2-8-SC.....	SL9
SLAL-75-BF4DR.....	SL2	SLSS-DWS-8.....	SL11	SWBP-BRKT	SL11

RATING SYMBOLS LEGEND



ANSI/BHMA CERTIFIED. Certified sliding door hardware complies with American National Standard for Sliding and Folding Door Hardware ANSI/BHMA A156.14, and is listed in the BHMA Certified Products Directory.

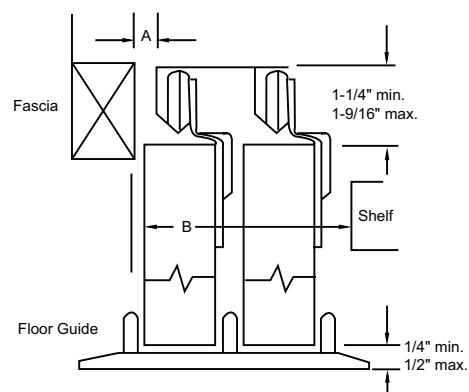
BY-PASS

SLIDING DOOR HARDWARE

ALUMINUM SIDE MOUNT TRACK SYSTEM

- Designed for Multi-family Applications
- Up to 1 $\frac{3}{8}$ " Doors
- Max Weight Load 75 lbs.
- 5-year Warranty

SKU	TRACK LENGTH
SLAL-75-BP-48	48"
SLAL-75-BP-60	60"
SLAL-75-BP-72	72"
SLAL-75-BP-96	96"



DOOR THICKNESS	3/4"	1 3/8"
DIMENSION A	0"	7/8"
DIMENSION B	2 3/4"	4"

Complete Kits Include:

- (1) Track
- (1) Floor Guide With Steel Bracket
- (2) Front Hangers
- (2) Back Hangers
- (2) Brass Pulls
- (2) Chrome Pulls

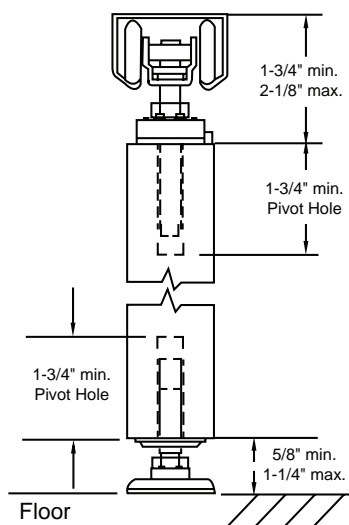


BI-FOLD

SLIDING DOOR HARDWARE

ALUMINUM TOP MOUNT TRACK SYSTEM

- Designed for Multi-family Applications
- 1 $\frac{3}{8}$ " To 1 $\frac{3}{4}$ " Doors
- Max Weight Load 75 lbs.
- 5-year Warranty



TWO DOOR SYSTEMS

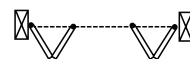


SKU	TRACK LENGTH
SLAL-75-BF2DR-36	36"
SLAL-75-BF2DR-48	48"

Two Door Complete Kits Include:

- | | |
|------------------|-------------------|
| (1) Track | (1) Aligner |
| (1) Top Pivot | (1) Wood Knob |
| (1) Bottom Pivot | (4) Brass Hinges |
| (1) Roller | (4) Chrome Hinges |
| (1) Snugger | |

FOUR DOOR SYSTEMS



SKU	TRACK LENGTH
SLAL-75-BF4DR-60	60"
SLAL-75-BF4DR-72	72"
SLAL-75-BF4DR-96	96"

Four Door Complete Kits Include:

- | | |
|-------------------|-------------------|
| (1) Track | (2) Aligners |
| (2) Top Pivots | (2) Wood Knobs |
| (2) Bottom Pivots | (8) Brass Hinges |
| (2) Rollers | (8) Chrome Hinges |
| (2) Snuggers | |



BY-PASS

SLIDING DOOR HARDWARE

ALUMINUM TOP MOUNT TRACK SYSTEM

- ▶ Commercial Grade for 1 $\frac{3}{8}$ " To 1 $\frac{3}{4}$ " Doors
- ▶ Max Weight Load 250 lbs.
- ▶ ANSI/BHMA A156.14 Grade 1 Certified to 100,000 Cycles Including Soft Close Feature
- ▶ Hangers with Heavy Duty Ball Bearing Wheels
- ▶ 5-Year Warranty



TWO DOOR SYSTEMS

SKU	TRACK LENGTH
SLAL-250-BP-2DR-48	48"
SLAL-250-BP-2DR-60	60"
SLAL-250-BP-2DR-72	72"
SLAL-250-BP-2DR-96	96"
SLAL-250-BP-2DR-144	144"

Complete Kits Include:

- (1) Track – Clear Anodized
- (2) Universal Hardware Packs,
Each Consist Of:
 - (2) Ball Bearing Heavy Duty Hangers
 - (2) Snap-In Door Brackets
 - (2) In-Track Stops
 - (1) Angle Stop
 - (1) Bumper Stop
 - (1) Door Guide
 - Heavy Duty Floor Guides

FOUR DOOR SYSTEMS

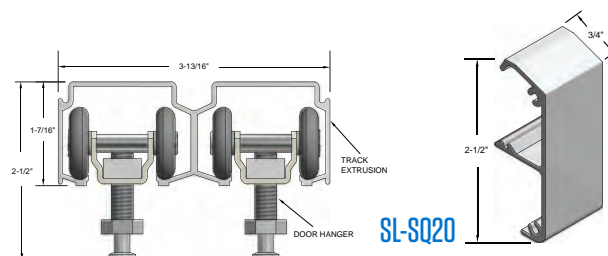
SKU	TRACK LENGTH
SLAL-250-BP-4DR-48	48"
SLAL-250-BP-4DR-60	60"
SLAL-250-BP-4DR-72	72"
SLAL-250-BP-4DR-96	96"
SLAL-250-BP-4DR-144	144"

Complete Kits Include:

- (1) Track – Clear Anodized
- (4) Universal Hardware Packs,
Each Consist Of:
 - (2) Ball Bearing Heavy Duty Hangers
 - (2) Snap-In Door Brackets
 - (2) In-Track Stops
 - (1) Angle Stop
 - (1) Bumper Stop
 - (1) Door Guide
 - Heavy Duty Floor Guides

OPTIONS:

- ▶ Soft Close / Open – Specify "SCBY"
For Both Directions Order (2) Sets SCBY
- ▶ Bottom Channel Guide SL-BCG (Page SL10)
- ▶ Snap-On Fascia (SL-SQ20) – Clear Anodized –
Shown Right
- ▶ Sidewall Mount Brackets SWBP-BRKT (Page SL10)



Includes End Caps

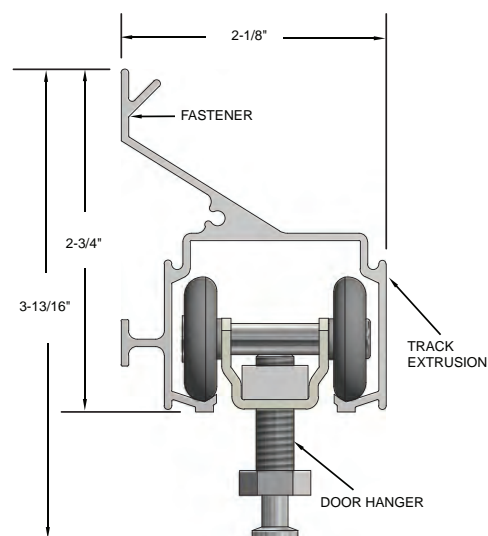
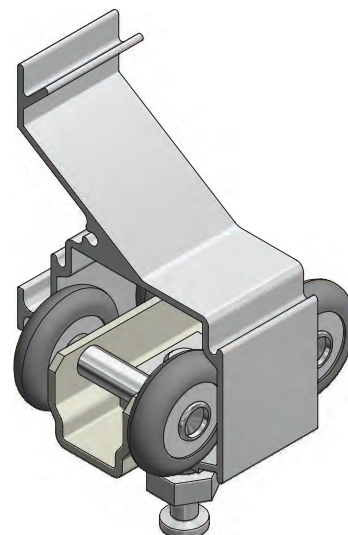
SIDE WALL MOUNT

SLIDING DOOR HARDWARE

ALUMINUM TOP MOUNT TRACK SYSTEM

- Commercial Grade for 1 $\frac{3}{8}$ " To 1 $\frac{3}{4}$ " Doors
- Max Weight Load 250 lbs.
- ANSI/BHMA A156.14 Grade 1 Certified to 100,000 Cycles Including Soft Close Feature
- Hangers with Heavy Duty Ball Bearing Wheels
- $\frac{3}{8}$ " Clearance Between Wall and Door on 1 $\frac{3}{4}$ " Thick Doors
- 5-year Warranty

SKU	TRACK LENGTH
SLAL-250-SW-48	48"
SLAL-250-SW-60	60"
SLAL-250-SW-72	72"
SLAL-250-SW-96	96"
SLAL-250-SW-144	144"

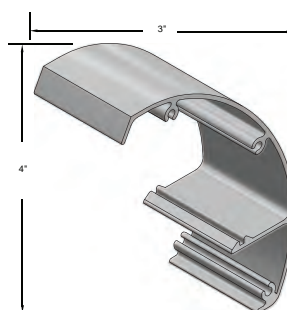


Complete Kits Include:

- (1) Track – Clear Anodized
- (1) Universal Hardware Pack, Consists Of:
 - (2) Ball Bearing Heavy Duty Hangers
 - (2) Snap-In Door Brackets
 - (2) In-Track Stops
 - (1) Angle Stop
 - (1) Bumper Stop
 - (1) Door Guide
 - Heavy Duty Floor Guides

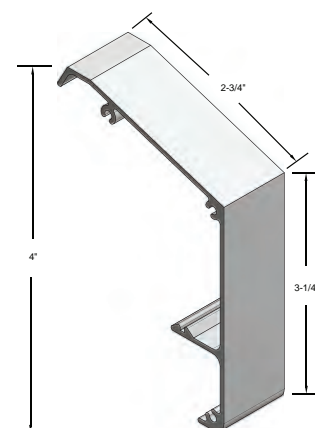
OPTIONS:

- Soft Close / Open – Specify “SC”
For Both Directions Order (2) SC
- Wall Mounted Guide SL-WG – included in Universal Hardware Pack (page SL10)
- Bottom Channel Guide SL-BCG (page SL10)
- Snap-on Fascias – Clear Anodized – Shown Right



SL-RD

Includes End Caps



SL-SQ18

POCKET DOOR

SLIDING DOOR HARDWARE

ALUMINUM TOP MOUNT TRACK SYSTEM

- ▶ Commercial Grade for 1⅜" To 1¾" Doors
- ▶ Max Weight Load 250 lbs.
- ▶ ANSI/BHMA A156.14 Grade 1 Certified to 100,000 Cycles Including Soft Close Feature
- ▶ Hangers with Heavy Duty Ball Bearing Wheels
- ▶ 5-Year Warranty

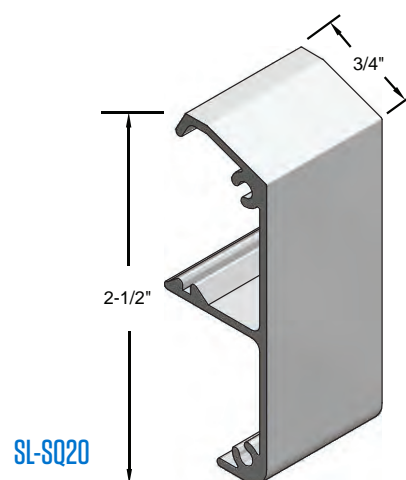
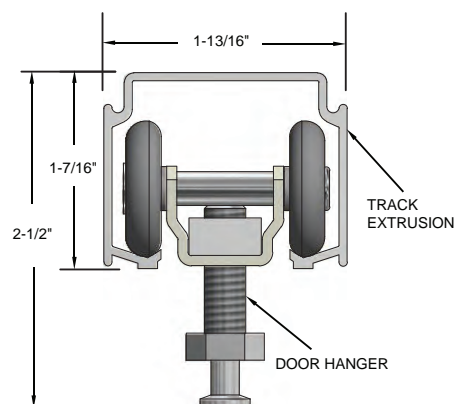
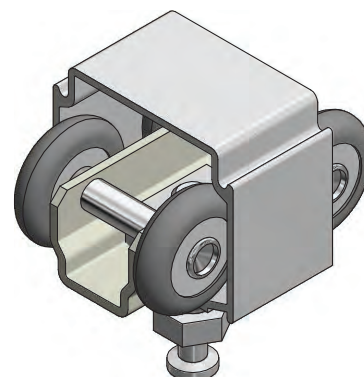
SKU	TRACK LENGTH
SLAL-250-PD-48	48"
SLAL-250-PD-60	60"
SLAL-250-PD-72	72"
SLAL-250-PD-96	96"
SLAL-250-PD-144	144"

Complete Kits Include:

- (1) Track – Clear Anodized
- (1) Universal Hardware Pack, Consists Of:
 - (2) Ball Bearing Heavy Duty Hangers
 - (2) Snap-In Door Brackets
 - (2) In-Track Stops
 - (1) Angle Stop
 - (1) Bumper Stop
 - (1) Door Guide
 - Heavy Duty Floor Guides

OPTIONS:

- ▶ Soft Close / Open – Specify "SC"
For Both Directions Order (2) SC
- ▶ Wall Mounted Guide SL-WG (page SL10)
- ▶ Bottom Channel Guide SL-BCG (page SL10)
- ▶ Snap-On Fascia (SL-SQ20) – Clear Anodized – Shown Right



Includes End Caps

POCKET DOOR

SLIDING DOOR HARDWARE FRAME KIT

ALUMINUM TOP MOUNT TRACK SYSTEM

- ▶ Commercial Grade for 1 $\frac{3}{8}$ " To 1 $\frac{3}{4}$ " Doors
- ▶ Frames Accommodate 2'0" - 3'0" x 6'8" - 9'0" Doors
- ▶ Max Weight Load 250 lbs.
- ▶ ANSI/BHMA A156.14 Grade 1 Certified to 100,000 Cycles Including Soft Close Feature
- ▶ Hangers with Heavy Duty Ball Bearing Wheels
- ▶ 5-year Warranty
- ▶ Patent Pending
- ▶ Available for 48" Doors – Specify SLAL-250-PDKIT-48"DR
- ▶ Available for 2 x 6 Wall Construction – Specify SLAL-250-PDKIT-6
- ▶ Available for 2 x 6 Wall Construction 48" Doors – Specify SLAL-PDKIT-6-48"

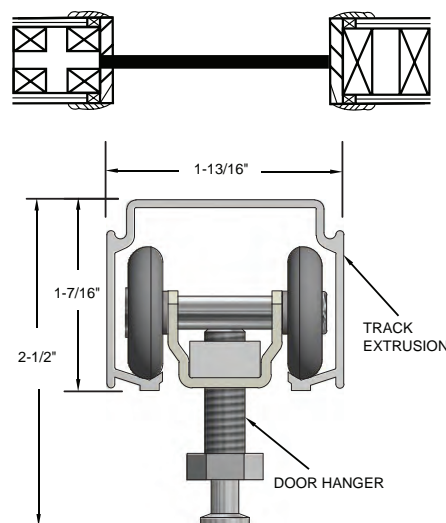
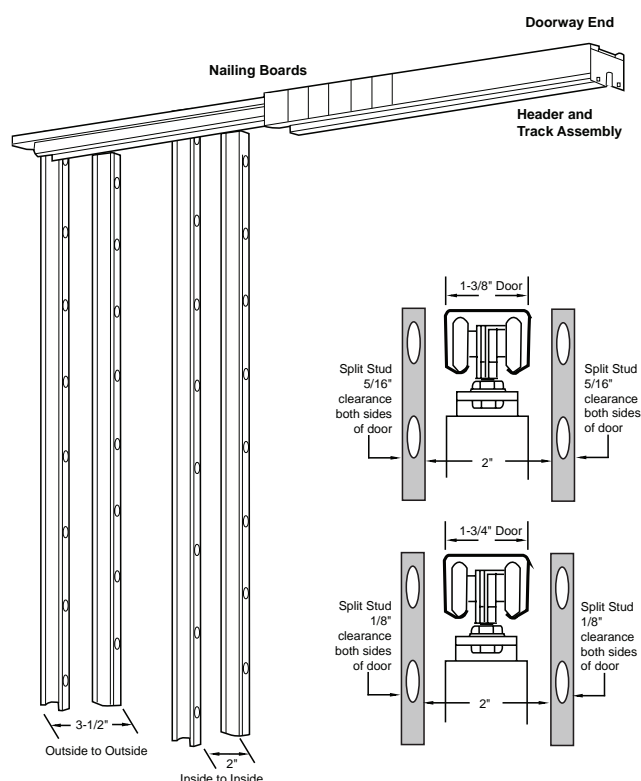


SKU	TRACK LENGTH
SLAL-250-PDKIT	N/A

Order two sets for Bi-Parting applications

Complete Kits Include:

- (1) **73" Header Track Assembly**
- (1) **Universal Hardware Pack, Consists Of:**
 - (2) Ball Bearing Heavy Duty Hangers
 - (2) Snap-In Door Brackets
 - (2) In-Track Stops
 - (1) Angle Stop
 - (1) Bumper Stop
 - (1) Door Guide
 - Heavy Duty Floor Guides
- (1) **Pocket Frame Kit**
 - (4) Jamb Stiffeners
 - (4) Jamb Stiffener Extensions
 - (4) Jamb Splice Brackets
 - (2) Floor Brackets
 - (1) End Bracket



OPTIONS:

- ▶ Soft Close / Open – Specify "SC"
For Both Directions Order (2) SC
- ▶ Floor Guide SLSS-FG
- ▶ Bottom Channel Guide SL-BCG (page SL10)

BI-PARTING

SLIDING DOOR HARDWARE

ALUMINUM TOP MOUNT TRACK SYSTEM

- Commercial Grade for 1 $\frac{3}{8}$ " To 1 $\frac{3}{4}$ " Doors
- Max Weight Load 250 lbs.
- ANSI/BHMA A156.14 Grade 1 Certified to 100,000 Cycles Including Soft Close Feature
- Hangers with Heavy Duty Ball Bearing Wheels
- 5-Year Warranty



SKU	TRACK LENGTH
SLAL-250-PD-48	48"
SLAL-250-PD-60	60"
SLAL-250-PD-72	72"
SLAL-250-PD-96	96"



Order two sets for Bi-Parting applications

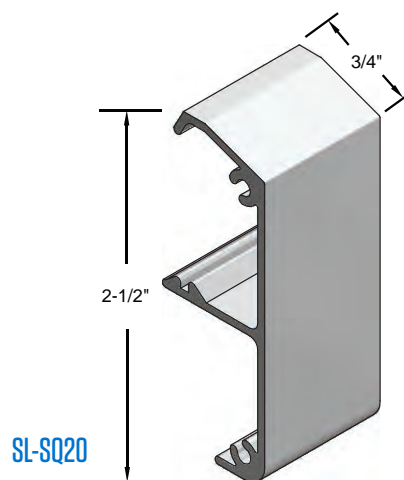
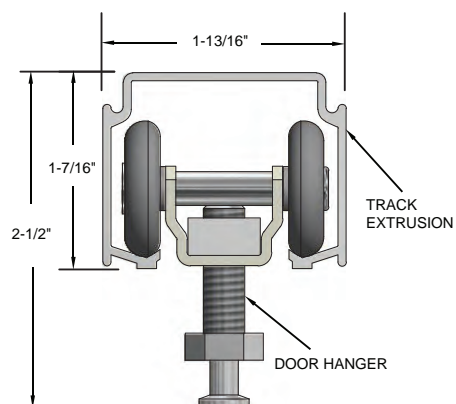
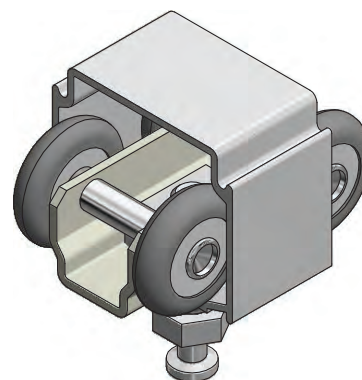
Complete Kits Include:

- (1) Track - Clear Anodized
- (1) Universal Hardware Pack, Consists Of:
 - (2) Ball Bearing Heavy Duty Hangers
 - (2) Snap-In Door Brackets
 - (2) In-Track Stops
 - (1) Angle Stop
 - (1) Bumper Stop
 - (1) Door Guide
 - Heavy Duty Floor Guides

For Bi-Parting Frame Kits – refer to page SL6

OPTIONS:

- Soft Close / Open – specify “SC”
For Both Directions Order (2) SC for Each Track Set
- Wall Mounted Guide SL-WG (page SL10)
- Bottom Channel Guide SL-BCG (page SL10)
- Snap-On Fascia (SL-SQ20) – Clear Anodized – Shown Right



Includes End Caps

BARN DOOR TOP MOUNT

SLIDING DOOR HARDWARE

- ▶ Fits 1" To 2" Thick Door Panel
- ▶ Brushed Stainless Steel 304
- ▶ Side Wall Mount
- ▶ Nylon Coated Stainless Steel Wheels for Smooth Operation
- ▶ Max Weight Load 220 lbs.
- ▶ ANSI/BHMA A156.14 Grade 1 Certified to 100,000 Cycles Including Soft Close Feature
- ▶ 5 year Warranty
- ▶ Order Two Sets for Bi-parting Applications



STAINLESS STEEL TOP MOUNT ROUND TRACK SYSTEM

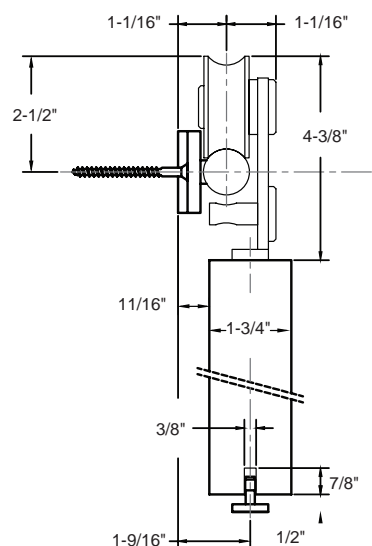
SKU	TRACK LENGTH
SLSS1-6	78 3/4"
SLSS1-8	98 7/16"

Complete Kits Include:

- | | |
|-------------|-----------------|
| (1) Track | (2) Door Stops |
| (2) Hangers | (1) Floor Guide |

SLSS1-6 includes: (5) Wall Attachments

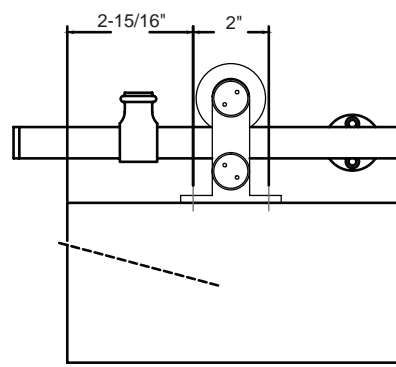
SLSS1-8 includes: (6) Wall Attachments



STAINLESS STEEL TOP MOUNT ROUND TRACK SYSTEM (WITH SOFT CLOSE)

SKU	TRACK LENGTH
SLSS1-6-SC*	78 3/4"
SLSS1-8-SC*	98 7/16"

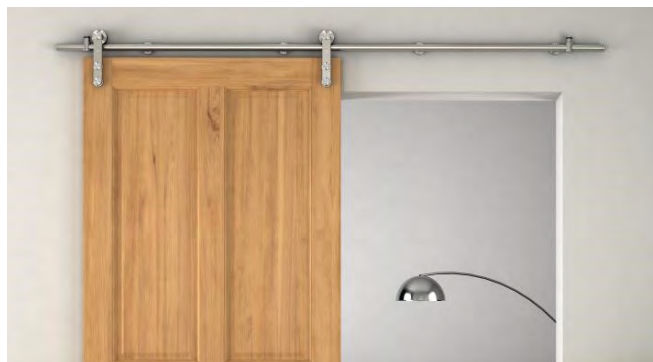
* Soft Close / Open Hardware is Included for Both Directions in Addition to the SLSS1-6 and SLSS1-8 Complete Kit Contents



BARN DOOR SIDE MOUNT

SLIDING DOOR HARDWARE

- ▶ Fits 1 $\frac{3}{8}$ " To 1 $\frac{3}{4}$ " Thick Door Panel
- ▶ Brushed Stainless Steel 304
- ▶ Side Wall Mount
- ▶ Nylon Coated Stainless Steel Wheels for Smooth Operation
- ▶ Max Weight Load 220 lbs.
- ▶ ANSI/BHMA A156.14 Grade 1 Certified to 100,000 Cycles Including Soft Close Feature
- ▶ 5 year Warranty
- ▶ Order Two Sets for Bi-parting Applications



STAINLESS STEEL SIDE MOUNT ROUND TRACK SYSTEM

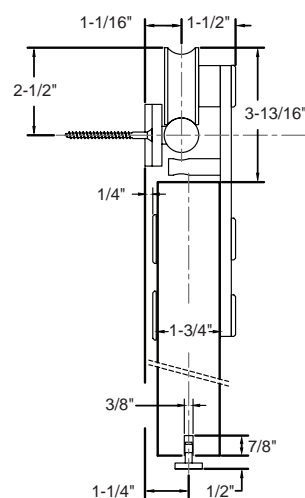
SKU	TRACK LENGTH
SLSS2-6	78 $\frac{3}{4}$ "
SLSS2-8	98 $\frac{7}{16}$ "

Complete Kits Include:

- | | |
|-------------|-----------------|
| (1) Track | (2) Door Stops |
| (2) Hangers | (1) Floor Guide |

SLSS2-6 includes: (5) Wall Attachments

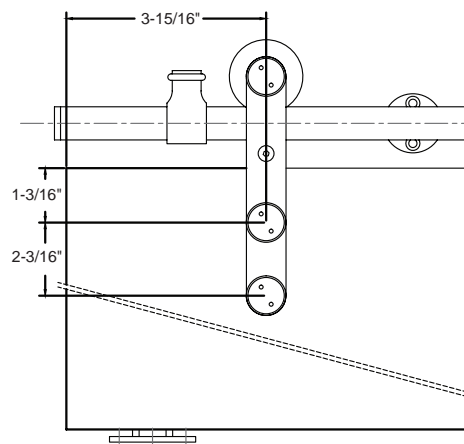
SLSS2-8 includes: (6) Wall Attachments



STAINLESS STEEL SIDE MOUNT ROUND TRACK SYSTEM (WITH SOFT CLOSE)

SKU	TRACK LENGTH
SLSS2-6-SC*	78 $\frac{3}{4}$ "
SLSS2-8-SC*	98 $\frac{7}{16}$ "

* Soft Close / Open Hardware is Included for Both Directions in Addition to the SLSS2-6 and SLSS2-8 Complete Kit Contents



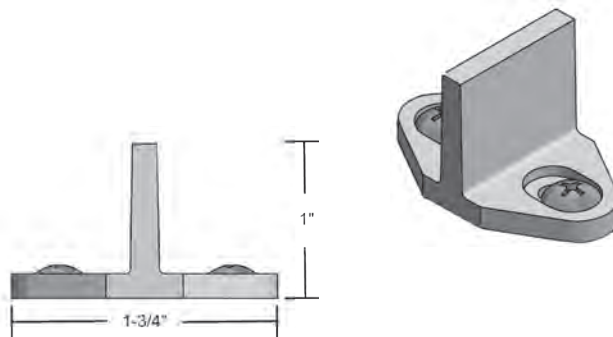
ACCESSORIES

SLIDING DOOR HARDWARE

FLOOR GUIDE

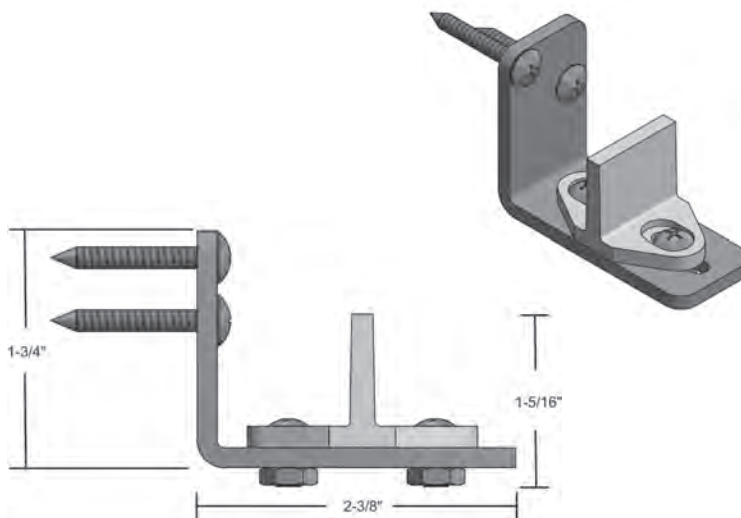
- Furnished Standard with Stainless Steel and Commercial Grade Aluminum Sliding Door Hardware Sets

SKU	MATERIAL/FINISH
SLSS-FG	Aluminum Dark Bronze Powder Coat



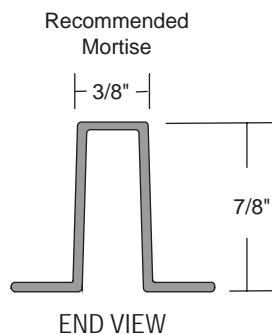
WALL MOUNTED GUIDE

SKU	MATERIAL/FINISH
SL-WG	Aluminum Floor Guide on Steel Bracket Dark Bronze Powder Coat #8-18 x 1-1/4" Truss Head Self-Tapping Screws



BOTTOM CHANNEL GUIDE

SKU	MATERIAL/LENGTH/COLOR
SL-BCG	Polypropylene 60" Dark Brown



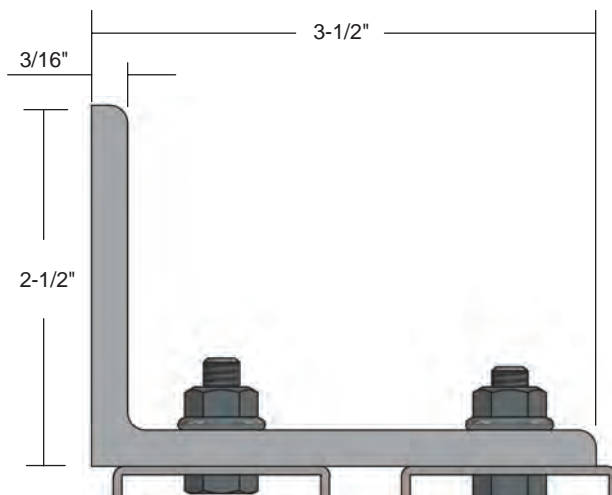
ACCESSORIES

SLIDING DOOR HARDWARE

SIDEWALL MOUNT BY-PASS BRACKET

SKU	MATERIAL/LENGTH/COLOR
SWBP-BRKT	$\frac{3}{16}$ " Steel Gray Finish

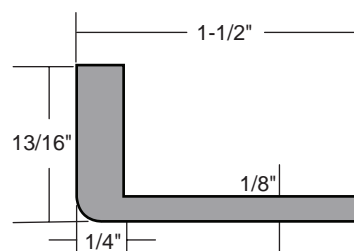
Use 3" from each end and not more than 24" on center



SIDEWALL MOUNT LOW-PROFILE BRACKET

SKU	MATERIAL/LENGTH/COLOR
SWPD-LPBRKT	1 $\frac{5}{8}$ " Length Mill Finish Aluminum

Use 3" from each end and not more than 24" on center



SOFT CLOSE

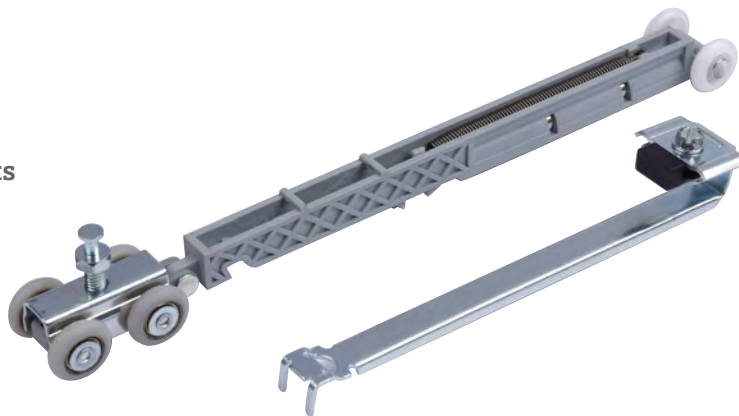
FOR ALUMINUM SLIDING DOOR HARDWARE

FEATURES:

SC

For Single Sliding Aluminum Hardware Sets

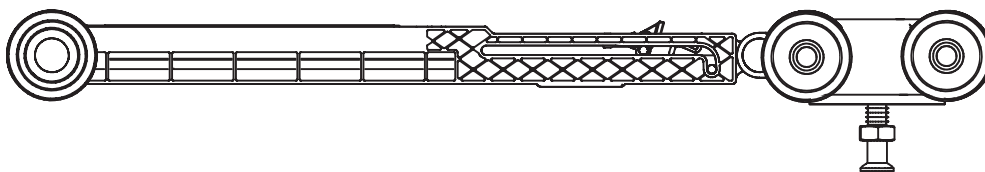
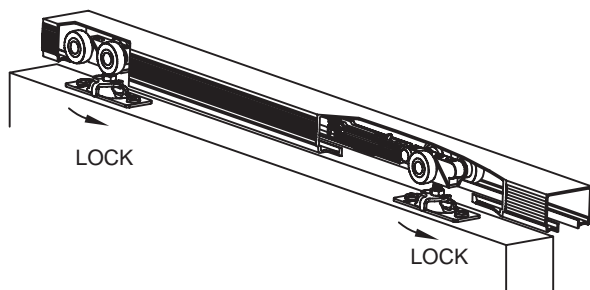
- Slows travel of the door to softly close
- Soft Close for Single Sliding Aluminum Hardware Sets
- For Both Directions Order (2) SC



SCBY

For By-Pass Sliding Aluminum Hardware Sets

- Slows travel of the door to softly close
- Set of (2) Soft Close for By-Pass Sliding Aluminum Hardware Sets
- For Both Directions Order (2) Sets SCBY



DRYWALL SPACER

FOR STAINLESS STEEL TRACK

FEATURES:

- ▶ Spacer Kits Include Two Sizes of Spacers
Allowing Installation Directly to the Blocking
Behind the Drywall
- ▶ The Finished Stainless Steel Plate
Accepts Mounting of the SLSS Track

SKU	# OF SPACERS/TRACK LENGTH
SLSS-DWS-6	5 Total Spacers/6' Track
SLSS-DWS-8	6 Total Spacers/8' Track

