



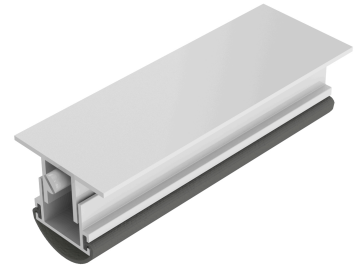
PRODUCT SPECIFICATIONS

For more information visit www.hagerco.com

742S

Automatic Door Bottom Hollow Metal Door
Application

Applications



PRODUCT SPECIFICATIONS

Category:
J

Fasteners:
#6 x 5/8" Pan head sheet metal screws furnished with mortise types

Finishes:
MIL

Fire Rating:
UL Listed

Inserts:
Vinyl

H Length:
49" to 60"

Notes:
The 742S is designed to be completely concealed in the bottom channel of hollow metal doors
Furnished exact length as stated.
Available order lengths: 24" to 60"
36"-48" can be trimmed up to 3"
All other sizes can be trimmed up to 1"

Size:
Width: 1-3/8" (34.93 mm) Height: 3/4" (19.1 mm)

Warranty:
Five-Year Warranty