

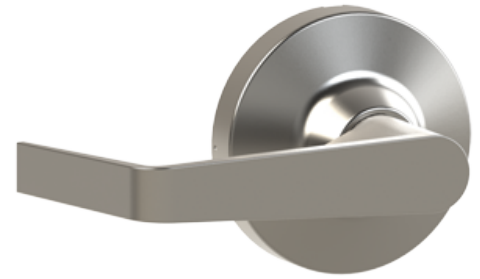


## PRODUCT SPECIFICATIONS

For more information visit [www.hagerco.com](http://www.hagerco.com)

# 47KP

## Applications



## PRODUCT SPECIFICATIONS

### Certifications:

Complies with ANSI A117.1 for accessible buildings and facilities (levers only)

### Door Thickness:

1-3/4" (45mm)

### Finishes:

ALM, DBZ, US3, US32D

### Functions:

14 - Entrance by trim when latch bolt is released by lever; always active; no cylinder

### Lever Options:

Archer, August, Withnell

### Notes:

4700 have steel bodies and zinc handles. The exception being US32D which has a stainless steel rose.

### Projection:

3-1/16" (78 mm) for Archer, 3-3/16" (80 mm) for August, 3-1/16" (78 mm) for Withnell

### Rose Diameter:

3-3/8" (86 mm)

### Standard Door Prep:

2-1/8" (54 mm) diameter (cross bore)  
Turtle Prep compatible ANSI A156.115

### Warranty:

Five-years