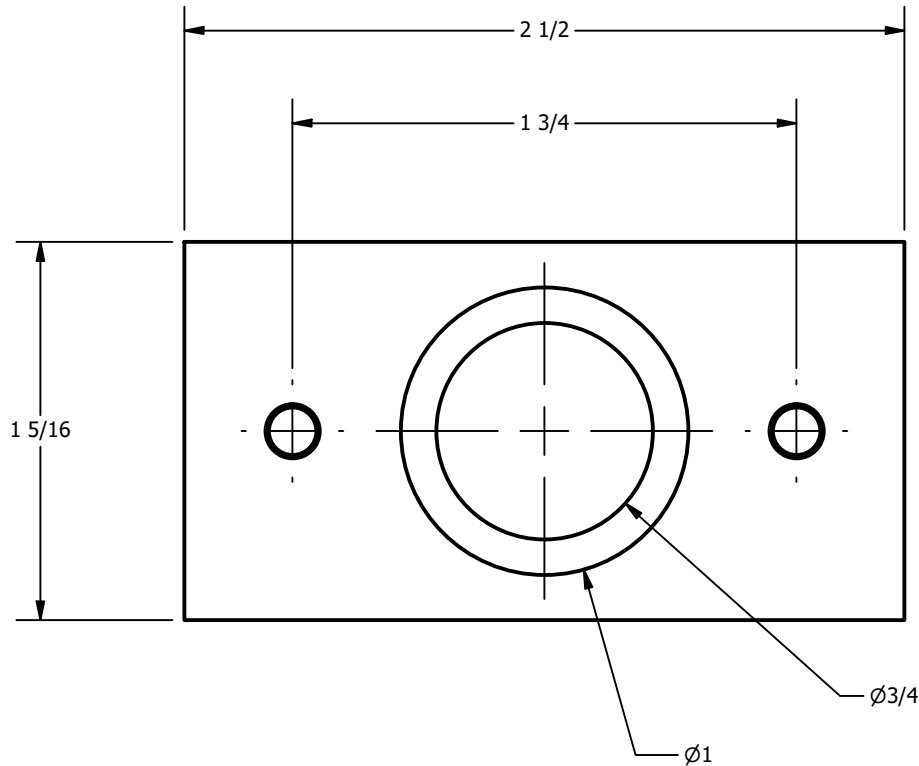
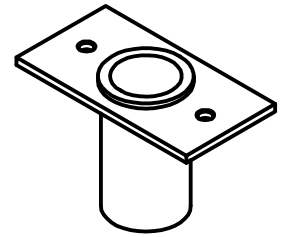




**Trimco**  
SINCE 1949

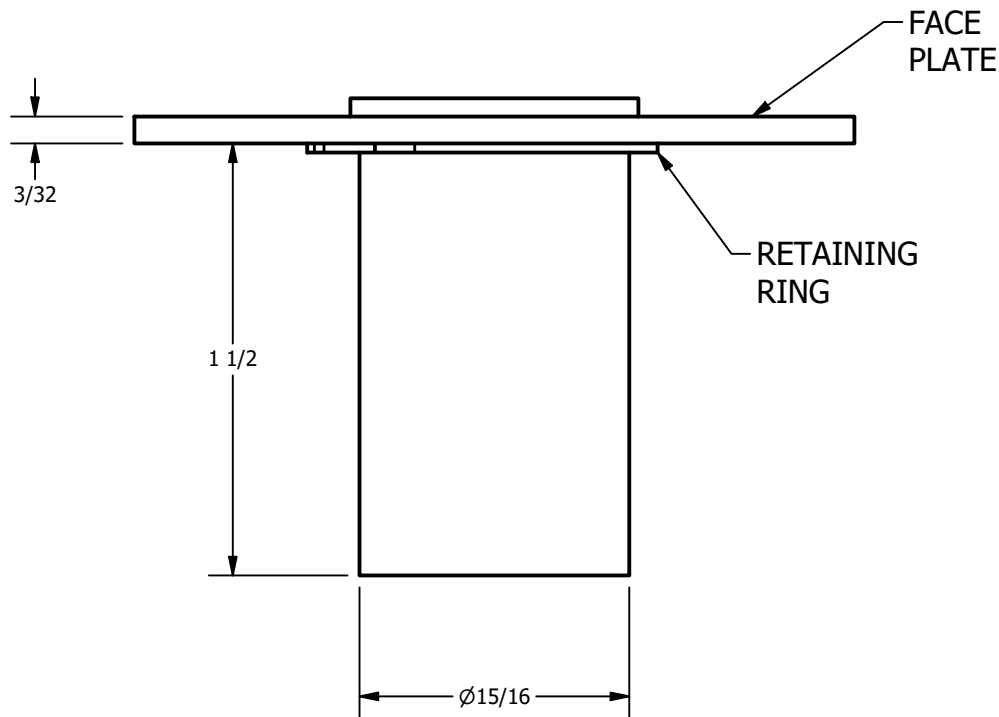
**PRODUCT:**

**3910 DUST PROOF STRIKE TEMPLATE**



NOTE: PRODUCT SUPPLIED WITH  
#8-32 OVAL HEAD MACHINE  
SCREWS AND EXPANSION SHIELDS.

FOR PRODUCT WITHOUT FACE  
PLATE, ADD SUFFIX "N" TO PART  
NUMBER.



**TEMPLATE# 21706**

**SHEET**

**1 OF 1**

**REVISION# 01**

**APPROVED ON: 9/8/2020**

This template is provided for use only on the job for which it was requested. Trimco reserves the right to make design changes without notice. Trimco will not be responsible for errors or damage caused by the use of out-of-date templates.

**TRIANGLE BRASS MANUFACTURING**  
1351 ROCKY POINT DRIVE  
OCEANSIDE, CA 92056  
[WWW.TRIMCOHARDWARE.COM](http://WWW.TRIMCOHARDWARE.COM)