



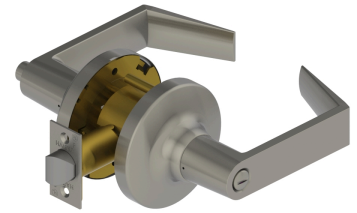
PRODUCT SPECIFICATIONS

For more information visit www.hagerco.com

3440 - Privacy (F76A)

Applications

Extra Heavy Duty Commercial
Industrial
Institution



PRODUCT SPECIFICATIONS

Backsets:

- 2-3/4" (70mm) - Standard
- 2-3/8" (60mm) - Optional
- 3-3/4" (94mm) - Optional
- 5" (128mm) - Optional

Certifications:

- ADA Compliant ANSI A117.1 Accessibility Code
- UL/cUL Listed for all functions up to 3 hours "A" label single doors
- UL10C Positive Pressure Rated
- BHMA Certified ANSI A156.2, Series 4000, Grade 1
- ANSI A250.13 Severe Windstorm Compliant
- Miami Dade County, FL NOA #17-1226.23

Door Thickness:

- 1-3/8" - 2" (35 mm - 51 mm)

Exposed Trim:

- Wrought brass, bronze, and stainless steel
- Lever is zinc based, plated to match BHMA symbols

Features:

- No exposed mounting screws
- Non-handed
- Free wheeling levers

Finishes:

- US3, US4, US10B, US26 and US26D
- Anti-Microbial Coating (US26D finish only)

Functions:

- Privacy (F76A)

Latchbolt Type:

- 1/2" (13 mm) throw, stainless steel
- 1-1/8" x 2-1/4" (29 mm x 57 mm) faceplate

Lever Options:

- Archer, August and Withnell

Lock Chassis:

- Heavy gauge steel, zinc dichromated for corrosion resistance. Thru-post mounted.

Options:

- Lead Lining
- Tactile Warning
- Split Finish

Rose Diameter:

- 3-17/32" (90 mm)

Standard Door Prep:

- 2-1/8" (54 mm) diameter with thru-bolt holes (cross bore)
- Latch hole - 1" (25 mm) diameter (edge bore)

Strikes:

- 1-1/4" x 4-7/8" (32 mm x 124 mm) ASA strike
- Optional strikes available

Warranty:

- Lifetime