



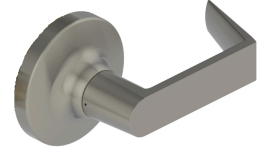
## PRODUCT SPECIFICATIONS

For more information visit [www.hagerco.com](http://www.hagerco.com)

# 3417 - Single Dummy

## Applications

Extra Heavy Duty Commercial  
Industrial  
Institution



## PRODUCT SPECIFICATIONS

### Certifications:

ADA Compliant ANSI A117.1 Accessibility Code

### Door Thickness:

1-3/8" - 2" (35 mm - 51 mm)

### Exposed Trim:

Wrought brass, bronze, and stainless steel  
Lever is zinc based, plated to match BHMA symbols

### Finishes:

US3, US4, US10B, US26, and US26D  
Anti-Microbial Coating (US26D finish only)

### Functions:

Single Dummy

### Lever Options:

Archer, August and Withnell

### Notes:

No exposed mounting screws  
Non-handed

### Rose Diameter:

3-17/32" (90 mm)

### Warranty:

Lifetime