

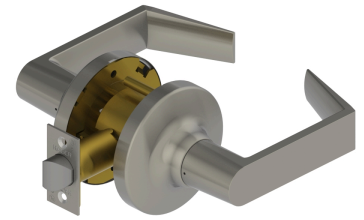


PRODUCT SPECIFICATIONS
For more information visit www.hagerco.com

3410 - Passage (F75)

Applications

Extra Heavy Duty Commercial
Industrial
Institution



PRODUCT SPECIFICATIONS

Backsets:

2-3/4" (70mm) - Standard
2-3/8" (60mm) - Optional
3-3/4" (94mm) - Optional
5" (128mm) - Optional

Certifications:

ADA Compliant ANSI A117.1 Accessibility Code
UL/cUL Listed for all functions up to 3 hours "A" label single doors
UL10C Positive Pressure Rated
BHMA Certified ANSI A156.2, Series 4000, Grade 1
ANSI A250.13 Severe Windstorm Compliant
Miami Dade County, FL NOA #17-1226.23

Door Thickness:

1-3/8" - 2" (35 mm - 51 mm)

Exposed Trim:

Wrought brass, bronze, and stainless steel
Lever is zinc based, plated to match BHMA symbols

Features:

No exposed mounting screws
Non-handed

Finishes:

US3, US4, US10B, US26, US26D
Anti-Microbial Coating (US26D finish only)

Functions:

Passage (F75)

Latchbolt Type:

1/2" (13 mm) throw, stainless steel
1-1/8" x 2-1/4" (29 mm x 57 mm) faceplate
Square corner faceplates standard, round corner available

Lever Options:

Archer, August and Withnell

Lock Chassis:

Heavy gauge steel, zinc dichromated for corrosion resistance. Thru-post mounted.

Options:

Lead Lining
Tactile Warning
Split Finish

Rose Diameter:

3-17/32" (90 mm)

Standard Door Prep:

2-1/8" (54 mm) diameter with thru-bolt holes (cross bore)
Latch hole - 1" (25 mm) diameter (edge bore)

Strikes:

1-1/4" x 4-7/8" (32 mm x 124 mm) ASA strike
Optional strikes available

Warranty:

Lifetime