



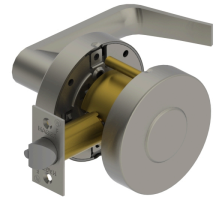
PRODUCT SPECIFICATIONS

For more information visit www.hagerco.com

2525 - Exit (F111)

Applications

Standard Duty Commercial



PRODUCT SPECIFICATIONS

Backsets:

- 2-3/4" (70 mm) standard
- 2-3/8" (60 mm) optional

Warranty:
5-year

Certifications:

- ADA Compliant ANSI A117.1 Accessibility Code
- UL/cUL Listed for all functions up to 3 hours "A" label single doors
- UL10C Positive Pressure Rated
- Meets BHMA A156.2 Grade 2 test standards

Door Thickness:

- 1-3/8" - 2" (35 mm - 51 mm)

Exposed Trim:

- Wrought brass, bronze, and stainless steel
- Lever is zinc based, plated to match BHMA symbols

Features:

- No exposed mounting screws
- Non-handed

Finishes:

- US3, US10B, and US26D

Functions:

- Exit (F111)

Latchbolt Type:

- 1/2" (13 mm) throw, stainless steel
- 1-1/8" x 2-1/4" (29 mm x 57 mm) faceplate for 2-3/4" (70 mm) backset
- 1" x 2-1/4" (25 mm x 57 mm) faceplate for 2-3/8" (60mm) backset
- Deadlocking latchbolt prevents manipulation when door is closed

Lever Options:

- Archer and Withnell

Lock Chassis:

- Heavy gauge steel, zinc dichromated for corrosion resistance. Thru-posts are removable. Failure to install thru-posts and screws voids BHMA certification, UL rating, and warranty

Notes:

- Blank plate projection is 13/16" (21 mm) for function 25

Options:

- Additional latchbolts and strikes available.

Rose Diameter:

- 3-11/32" (85 mm)

Standard Door Prep:

- Standard door prep - 2-1/8" (54 mm) diameter (cross bore)
- Latch hole - 1" (25 mm) diameter (edge bore)

Strikes:

- 1-1/4" x 4-7/8" (32 mm x 124 mm) ASA strike